

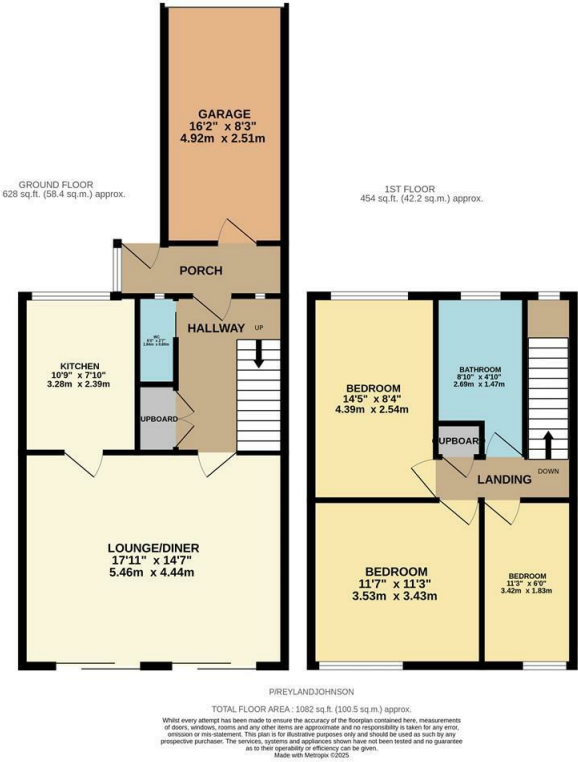


Peterswood,, Harlow, CM18 7RN
£350,000



Peterswood,, Harlow, CM18 7RN

This immaculately presented three bedroom terraced family home includes a garage and driveway and is located in a quiet cut-de-sac. As you enter there is a porch and hallway leading to a large lounge/diner, modern fitted kitchen with a range of wall and base units with integrated appliances and a cloakroom/WC. On the first floor are three bedrooms and a family bathroom with a modern white three piece suite. Outside, the rear garden is laid to patio, with a shed and rear access out to a small green, with the garage and driveway to the front. Peterswood is located close to Staple Tye, with local schools, shops and open fields within walking distance.



Energy Efficiency Rating			Environmental Impact (CO ₂) Rating		
	Current	Potential		Current	Potential
Very energy efficient - lower running costs	(92 plus) A		Very environmentally friendly - lower CO ₂ emissions	(92 plus) A	
	(81-91) B			(81-91) B	
	(69-80) C			(69-80) C	
	(55-68) D			(55-68) D	
	(39-54) E			(39-54) E	
	(21-38) F			(21-38) F	
	(1-20) G			(1-20) G	
Not energy efficient - higher running costs			Not environmentally friendly - higher CO ₂ emissions		
England & Wales			England & Wales		
EU Directive 2002/91/EC			EU Directive 2002/91/EC		

These particulars, whilst believed to be accurate are set out as a general outline only for guidance and do not constitute any part of an offer or contract. Intending purchasers should not rely on them as statements of representation of fact, but must satisfy themselves by inspection or otherwise as to their accuracy. No person in this firms employment has the authority to make or give any representation or warranty in respect of the property.