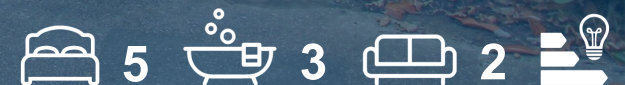


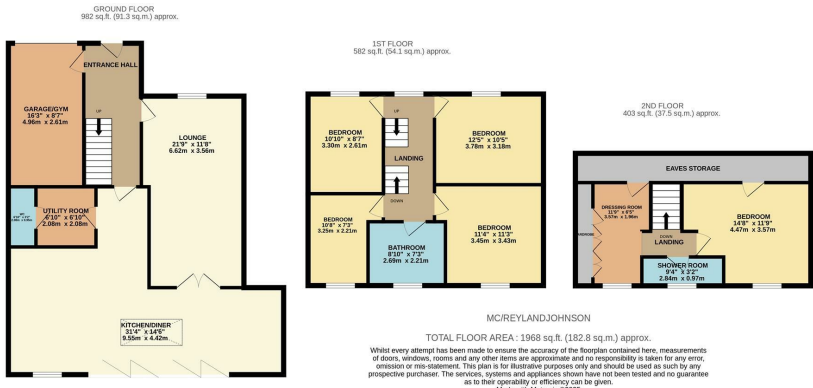


Mayfield Close, CM17 0LH, Old Harlow, CM17 0LH
£750,000



Mayfield Close, CM17 0LH, Old Harlow, CM17 0LH

Located in a quiet cut-de-sac in the highly desirable Old Harlow area, is this absolutely stunning five double bedroom detached family home, which has been extended and includes a garage and driveway. As you enter there is spacious hallway, which leads to a large lounge and a huge, open plan kitchen/diner/family room complete with modern fitted wall and base units, integrated appliances, an island, bi-fold doors and a sky light. There is also a matching utility room, cloakroom/WC and access to the integral garage (currently used as a gym). Upstairs there are four double bedrooms with a stunning family bathroom, whilst on the top floor there is a master suite, with a large bedroom, shower room and dressing room (which could be used as a sixth bedroom). Outside the rear garden has been perfectly laid out, with a patio area, artificial lawn, side access, a shed and a covered pagoda, whilst to the front is the driveway. Mayfield Close is located just off Sheering Road, with excellent local schools, shops and open fields within walking distance, plus the M11 and Harlow Mill Station are just a short drive away.



Energy Efficiency Rating			Environmental Impact (CO ₂) Rating		
	Current	Potential		Current	Potential
Very energy efficient - lower running costs			Very environmentally friendly - lower CO ₂ emissions		
(92 plus) A			(92 plus) A		
(81-91) B			(81-91) B		
(69-80) C			(69-80) C		
(55-68) D			(55-68) D		
(39-54) E			(39-54) E		
(21-38) F			(21-38) F		
(1-20) G			(1-20) G		
Not energy efficient - higher running costs			Not environmentally friendly - higher CO ₂ emissions		
England & Wales			England & Wales		
EU Directive 2002/91/EC			EU Directive 2002/91/EC		

These particulars, whilst believed to be accurate are set out as a general outline only for guidance and do not constitute any part of an offer or contract. Intending purchasers should not rely on them as statements of representation of fact, but must satisfy themselves by inspection or otherwise as to their accuracy. No person in this firms employment has the authority to make or give any representation or warranty in respect of the property.