

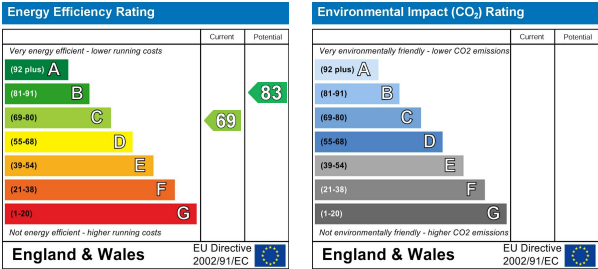
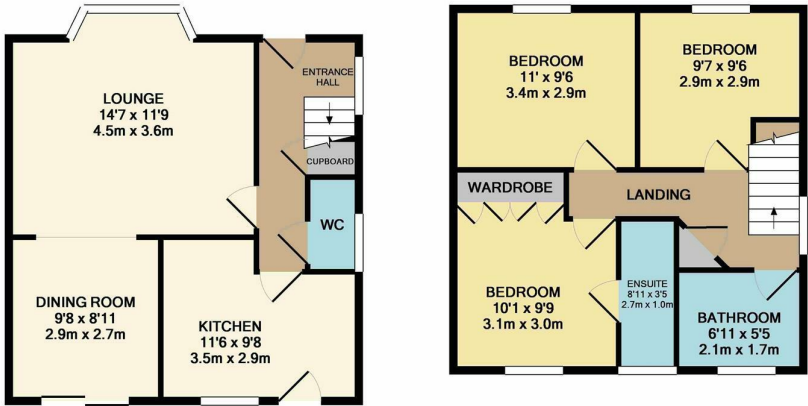


Chelsea Gardens, Church Langley, CM17 9RY
Guide Price £450,000



Chelsea Gardens, Church Langley, CM17 9RY

****(Guide Price £450,000 - £465,000)**** Offered for sale with no onward chain is this three bedroom detached home found at the end of a quiet cul-de-sac in Chelsea Gardens. The property comprises an entrance hallway leading to a large lounge which opens onto the dining room, a fitted kitchen with a range of wall and base units and a cloakroom/WC. On the first floor are three bedrooms, with fitted wardrobes and an en-suite to the master, plus a family bathroom with a white three piece suite. The rear garden is mainly laid out to patio, with side access. Chelsea Gardens is found just off Lane End, with local schools, shops and open fields close by. Chain Free.



These particulars, whilst believed to be accurate are set out as a general outline only for guidance and do not constitute any part of an offer or contract. Intending purchasers should not rely on them as statements of representation of fact, but must satisfy themselves by inspection or otherwise as to their accuracy. No person in this firms employment has the authority to make or give any representation or warranty in respect of the property.