



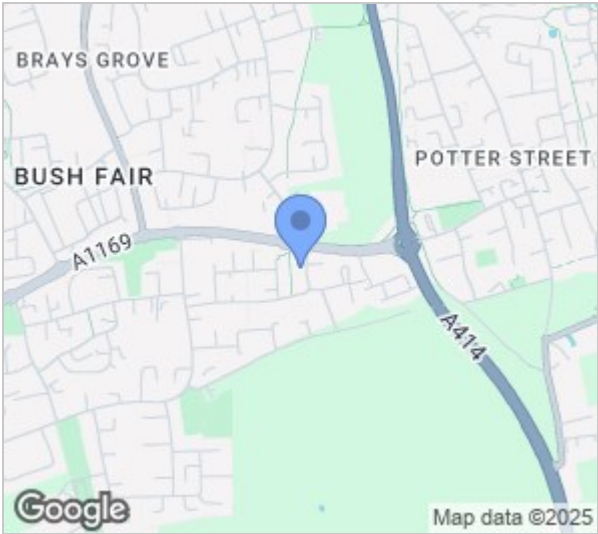
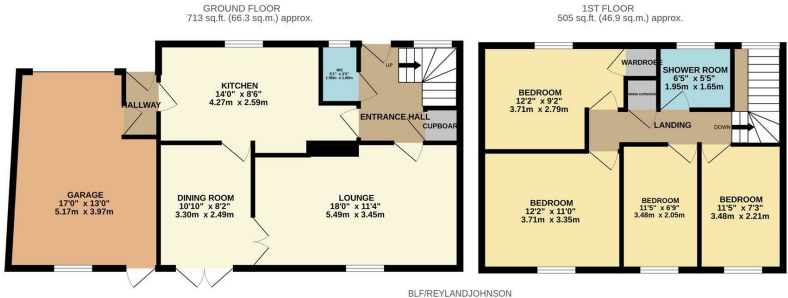
Brook Lane Field, Harlow, CM18 7AS  
£500,000





# Brook Lane Field, Harlow, CM18 7AS

Offered with no onward chain is this well presented four bedroom semi detached family home in the highly popular area of Brook Lane Field. On the ground floor there is an entrance hallway leading to a modern fitted kitchen with a range of wall and base units, a large lounge, dining room, cloakroom/WC and access to the garage, whilst upstairs there are four bedrooms and a family bathroom with a white three piece suite. Outside, the west facing rear garden is mainly laid to lawn with a decked area and access to the rear of the garage, with a large driveway to the front. Brook Lane Field is found just off Southern Way, opposite Passmores School and Holy Cross School, with Latton Common just a stones throw away as well as other excellent local schools and shops.



| Energy Efficiency Rating                    |                         |           |
|---|-------------------------|-----------|
|   | Current                 | Potential |
| Very energy efficient - lower running costs |                         |           |
| (92 plus) <b>A</b>                          |                         |           |
| (81-91) <b>B</b>                            |                         |           |
| (69-80) <b>C</b>                            |                         |           |
| (55-68) <b>D</b>                            |                         |           |
| (39-54) <b>E</b>                            |                         |           |
| (21-38) <b>F</b>                            |                         |           |
| (1-20) <b>G</b>                             |                         |           |
| Not energy efficient - higher running costs |                         |           |
| England & Wales                             | EU Directive 2002/91/EC |           |

| Environmental Impact (CO <sub>2</sub> ) Rating                  |                         |           |
|---|-------------------------|-----------|
|   | Current                 | Potential |
| Very environmentally friendly - lower CO <sub>2</sub> emissions |                         |           |
| (92 plus) <b>A</b>  |                         |           |
| (81-91) <b>B</b>  |                         |           |
| (69-80) <b>C</b>  |                         |           |
| (55-68) <b>D</b>  |                         |           |
| (39-54) <b>E</b>  |                         |           |
| (21-38) <b>F</b>  |                         |           |
| (1-20) <b>G</b>   |                         |           |
| Not environmentally friendly - higher CO <sub>2</sub> emissions |                         |           |
| England & Wales   | EU Directive 2002/91/EC |           |

These particulars, whilst believed to be accurate are set out as a general outline only for guidance and do not constitute any part of an offer or contract. Intending purchasers should not rely on them as statements of representation of fact, but must satisfy themselves by inspection or otherwise as to their accuracy. No person in this firms employment has the authority to make or give any representation or warranty in respect of the property.