

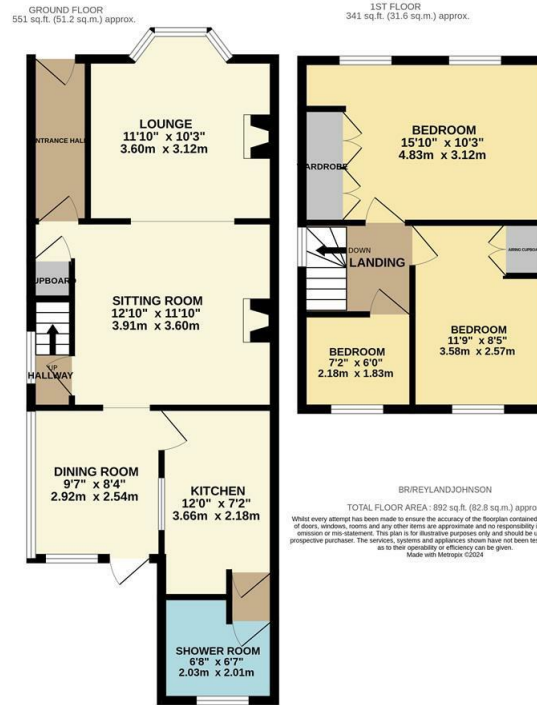
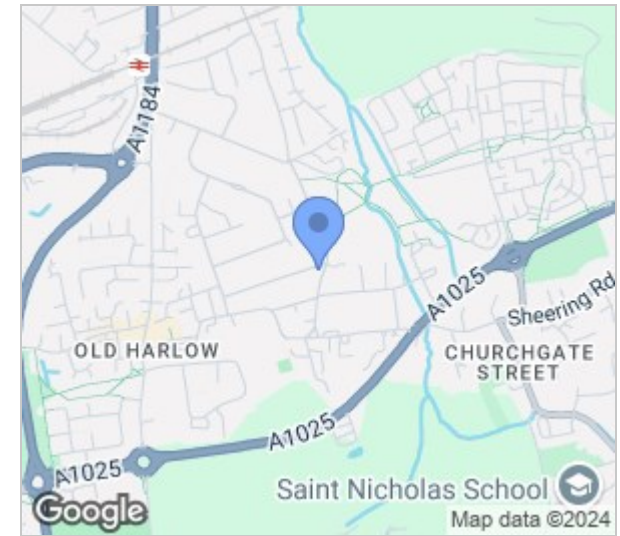


Bury Road, Old Harlow, CM17 0EE  
Guide Price £425,000

3 1 3 D

# Bury Road, Old Harlow, CM17 0EE

**\*\*Guide Price £425,000 - £450,000\*\*** Offered with no onward chain is this three bedroom semi detached family home with a garage and driveway located in the heart of Old Harlow and within walking distance of Harlow Mill Train Station. On the ground floor, the entrance hallway leads to an open plan lounge and sitting room, a dining room, modern fitted kitchen with a range of wall and base units and a shower room, whilst upstairs there are three bedrooms. Outside the rear garden is laid to lawn and patio, with side access and rear access leading out to the garage and driveway. Bury Road is found just off Old Road, within walking distance of Old Harlow High Street, excellent local schools and open fields, with the new M11 junction close by.



Energy Efficiency Rating		Current	Potential
Very energy efficient - lower running costs			
(92 plus) A			
(81-91) B			
(69-80) C			
(55-68) D			
(39-54) E			
(21-38) F			
(1-20) G			
Not energy efficient - higher running costs			
England & Wales		EU Directive 2002/91/EC	

Environmental Impact (CO <sub>2</sub> ) Rating		Current	Potential
Very environmentally friendly - lower CO <sub>2</sub> emissions			
(92 plus) A			
(81-91) B			
(69-80) C			
(55-68) D			
(39-54) E			
(21-38) F			
(1-20) G			
Not environmentally friendly - higher CO <sub>2</sub> emissions			
England & Wales		EU Directive 2002/91/EC	

These particulars, whilst believed to be accurate are set out as a general outline only for guidance and do not constitute any part of an offer or contract. Intending purchasers should not rely on them as statements of representation of fact, but must satisfy themselves by inspection or otherwise as to their accuracy. No person in this firm's employment has the authority to make or give any representation or warranty in respect of the property.

T. 01279 216216 E. info@rjestateagents.co.uk

1 Acorn Mews, Harlow, Essex, CM18 6NA www.rjestateagents.co.uk