

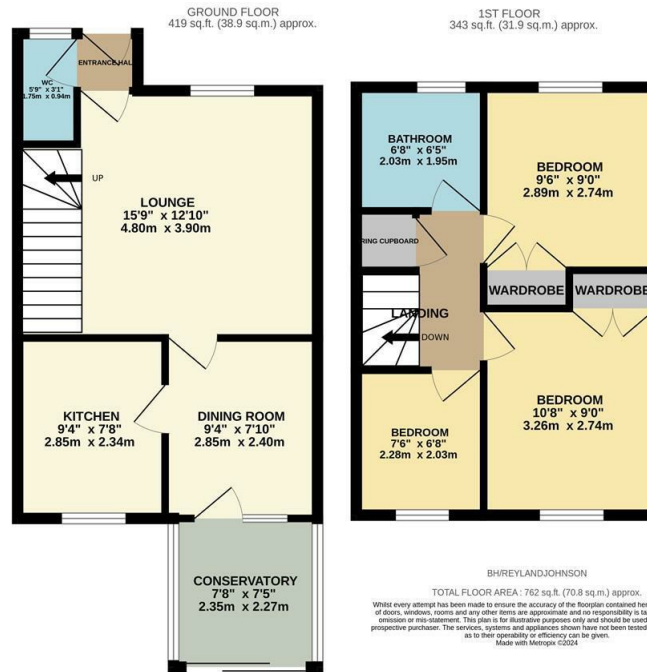


Burley Hill, Harlow, CM17 9QQ  
£340,000

3 1 2 C

# Burley Hill, Harlow, CM17 9QQ

Offered with no onward chain is this three bedroom end terrace family home with allocated parking. Inside there is an entrance hall leading to a large lounge, dining room, kitchen with a range of fitted wall and base units, conservatory and a cloakroom/WC. On the first floor there are three bedrooms, two of which have fitted wardrobes and a family bathroom with a white three piece suite. Outside the rear garden is laid to lawn with a patio area and side access leading to the allocated parking. Burley Hill is located in the ever popular Church Langley development, within walking distance of excellent local schools, shops, open fields and woodlands.



Energy Efficiency Rating		Current	Potential
Very energy efficient - lower running costs	(92 plus) <b>A</b>		
(81-91) <b>B</b>			<b>89</b>
(69-80) <b>C</b>		<b>76</b>	
(55-68) <b>D</b>			
(39-54) <b>E</b>			
(21-38) <b>F</b>			
(1-20) <b>G</b>			
Not energy efficient - higher running costs			
England & Wales		EU Directive 2002/91/EC	

Environmental Impact (CO <sub>2</sub> ) Rating		Current	Potential
Very environmentally friendly - lower CO <sub>2</sub> emissions	(92 plus) <b>A</b>		
(81-91) <b>B</b>			<b>89</b>
(69-80) <b>C</b>		<b>76</b>	
(55-68) <b>D</b>			
(39-54) <b>E</b>			
(21-38) <b>F</b>			
(1-20) <b>G</b>			
Not environmentally friendly - higher CO <sub>2</sub> emissions			
England & Wales		EU Directive 2002/91/EC	

These particulars, whilst believed to be accurate are set out as a general outline only for guidance and do not constitute any part of an offer or contract. Intending purchasers should not rely on them as statements of representation of fact, but must satisfy themselves by inspection or otherwise as to their accuracy. No person in this firm's employment has the authority to make or give any representation or warranty in respect of the property.

T. 01279 216216 E. info@rjestateagents.co.uk

1 Acorn Mews, Harlow, Essex, CM18 6NA www.rjestateagents.co.uk