



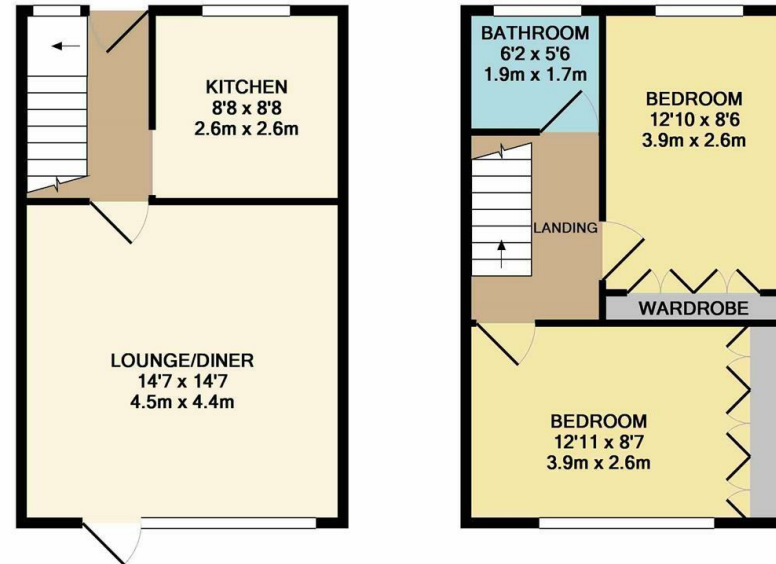
Northbrooks, Harlow, CM19 4DE
£250,000

2 1 1 C

A set of icons representing property features: a bed icon for 2 bedrooms, a bathtub icon for 1 bathroom, a sofa icon for 1 living room, and a lightbulb icon for central heating (C).

Northbrooks, Harlow, CM19 4DE

A two bedroom, split level maisonette, located within walking distance of Harlow Town Centre and Princess Alexandra Hospital which includes its own large rear garden. The property is well presented throughout which includes a large lounge/diner and kitchen on the ground floor and two double bedrooms with fitted wardrobes and a modern family bathroom with a white three piece suite on the first floor. Access to the rear garden is from the lounge and is mainly laid to lawn with a decked area and rear access. Lease Remaining: 86 Years. Service Charge: £75 Pm. Ground Rent: £10pa.



GROUND FLOOR
APPROX. FLOOR
AREA 339 SQ.FT.
(31.5 SQ.M.)

1ST FLOOR
APPROX. FLOOR
AREA 339 SQ.FT.
(31.5 SQ.M.)

643
TOTAL APPROX. FLOOR AREA 678 SQ.FT. (63.0 SQ.M.)

Whilst every attempt has been made to ensure the accuracy of the floor plan contained here, measurements of doors, windows, rooms and any other items are approximate and no responsibility is taken for any error, omission, or mis-statement. This plan is for illustrative purposes only and should be used as such by any prospective purchaser. The services, systems and appliances shown have not been tested and no guarantee as to their operability or efficiency can be given.
Made with Metropix ©2017



Energy Efficiency Rating	Current	Potential
Very energy efficient - lower running costs		
(92 plus) A		
(81-91) B		
(69-80) C		
(55-68) D		
(39-54) E		
(21-38) F		
(1-20) G		
Not energy efficient - higher running costs		
England & Wales	EU Directive 2002/91/EC	EU Directive 2002/91/EC

Environmental Impact (CO ₂) Rating	Current	Potential
Very environmentally friendly - lower CO ₂ emissions		
(92 plus) A		
(81-91) B		
(69-80) C		
(55-68) D		
(39-54) E		
(21-38) F		
(1-20) G		
Not environmentally friendly - higher CO ₂ emissions		
England & Wales	EU Directive 2002/91/EC	EU Directive 2002/91/EC

These particulars, whilst believed to be accurate are set out as a general outline only for guidance and do not constitute any part of an offer or contract. Intending purchasers should not rely on them as statements of representation of fact, but must satisfy themselves by inspection or otherwise as to their accuracy. No person in this firm's employment has the authority to make or give any representation or warranty in respect of the property.

T. 01279 216216 E. info@rjestateagents.co.uk

1 Acorn Mews, Harlow, Essex, CM18 6NA www.rjestateagents.co.uk