



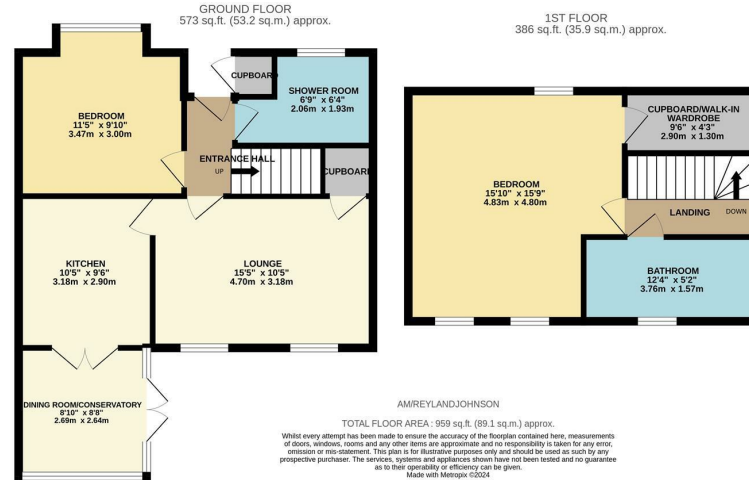
Alexander Mews, Harlow, CM17 9BX  
£365,000

2 2 2 C



# Alexander Mews, Harlow, CM17 9BX

Located in a private gated development is this rarely available two double bedroom semi detached chalet bungalow, offered with NO ONWARD CHAIN. On the ground floor there is an entrance hallway leading to a large lounge, modern kitchen with a range of fitted wall and base units, a conservatory/dining room, double bedroom and a shower room, whilst upstairs there is a huge master bedroom and a large bathroom. Outside the south facing rear garden is mainly laid to lawn with a patio and shingle area, two sheds and side access, leading to the parking to the front. Alexander Mews is located in the Potter Street area of Harlow, with local shops, schools and Harlow Common within walking distance. Please note there is an annual service charge of £200pa.



Energy Efficiency Rating		Current	Potential
Very energy efficient - lower running costs			
(92 plus) A			
(81-91) B			83
(69-80) C		70	
(55-68) D			
(39-54) E			
(21-38) F			
(1-20) G			
Not energy efficient - higher running costs			
England & Wales	EU Directive 2002/91/EC		

Environmental Impact (CO <sub>2</sub> ) Rating		Current	Potential
Very environmentally friendly - lower CO <sub>2</sub> emissions			
(92 plus) A			
(81-91) B			
(69-80) C			
(55-68) D			
(39-54) E			
(21-38) F			
(1-20) G			
Not environmentally friendly - higher CO <sub>2</sub> emissions			
England & Wales	EU Directive 2002/91/EC		

These particulars, whilst believed to be accurate are set out as a general outline only for guidance and do not constitute any part of an offer or contract. Intending purchasers should not rely on them as statements of representation of fact, but must satisfy themselves by inspection or otherwise as to their accuracy. No person in this firm's employment has the authority to make or give any representation or warranty in respect of the property.

T. 01279 216216 E. info@rjestateagents.co.uk

1 Acorn Mews, Harlow, Essex, CM18 6NA www.rjestateagents.co.uk