



Peterswood, Harlow, CM18 7RJ  
£1,100 Per Month

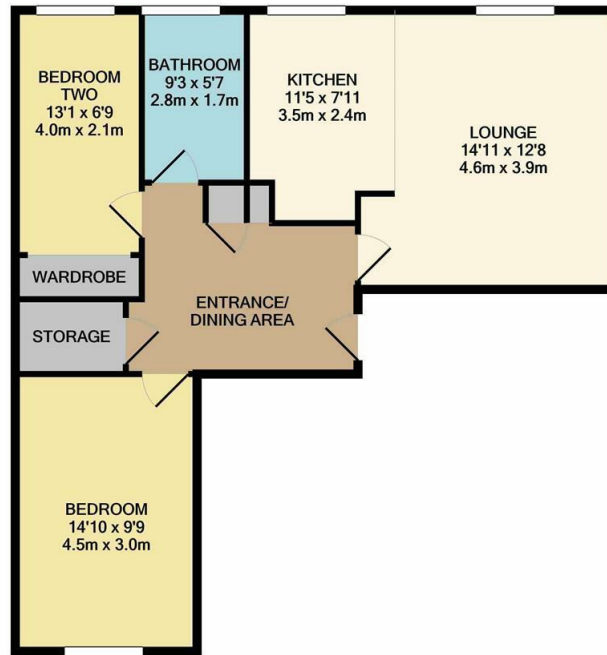
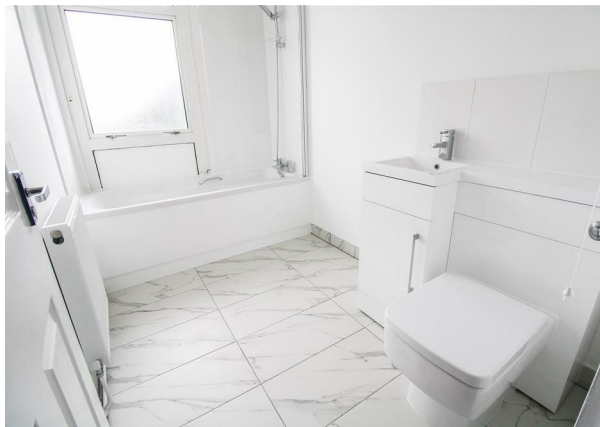
2 1 2 C

A set of icons representing property features: a bed icon with the number 2, a bathtub icon with the number 1, a sofa icon with the number 2, and a lightbulb icon with the letter C.



# Peterswood, Harlow, CM18 7RJ

Available at the beginning of August is this first floor, two bedroom apartment with an open living area and a modern kitchen. There is an entrance hall which is big enough to use as a dining area, large main bedroom and generous second bedroom with fitted wardrobes. There is a modern bathroom with a white three-piece suite and other benefits include plenty of storage space, external shed and communal garden.



266  
TOTAL APPROX. FLOOR AREA 706 SQ.FT. (65.6 SQ.M.)

Whilst every attempt has been made to ensure the accuracy of the floor plan contained here, measurements of doors, windows, rooms and any other items are approximate and no responsibility is taken for any error, omission, or mis-statement. This plan is for illustrative purposes only and should be used as such by any prospective purchaser. The services, systems and appliances shown have not been tested and no guarantee as to their operability or efficiency can be given.  
Made with Metropix ©2021

Energy Efficiency Rating		
	Current	Potential
Very energy efficient - lower running costs		
(92 plus) <b>A</b>		
(81-91) <b>B</b>		
(69-80) <b>C</b>		
(55-68) <b>D</b>		
(39-54) <b>E</b>		
(21-38) <b>F</b>		
(1-20) <b>G</b>		
Not energy efficient - higher running costs		
	78	81
<b>England &amp; Wales</b>	EU Directive 2002/91/EC	

Environmental Impact (CO <sub>2</sub> ) Rating		
	Current	Potential
Very environmentally friendly - lower CO <sub>2</sub> emissions		
(92 plus) <b>A</b>		
(81-91) <b>B</b>		
(69-80) <b>C</b>		
(55-68) <b>D</b>		
(39-54) <b>E</b>		
(21-38) <b>F</b>		
(1-20) <b>G</b>		
Not environmentally friendly - higher CO <sub>2</sub> emissions		
	80	84
<b>England &amp; Wales</b>	EU Directive 2002/91/EC	

These particulars, whilst believed to be accurate are set out as a general outline only for guidance and do not constitute any part of an offer or contract. Intending purchasers should not rely on them as statements of representation of fact, but must satisfy themselves by inspection or otherwise as to their accuracy. No person in this firm's employment has the authority to make or give any representation or warranty in respect of the property.

T. 01279 216216 E. info@rjestateagents.co.uk

1 Acorn Mews, Harlow, Essex, CM18 6NA www.rjestateagents.co.uk