

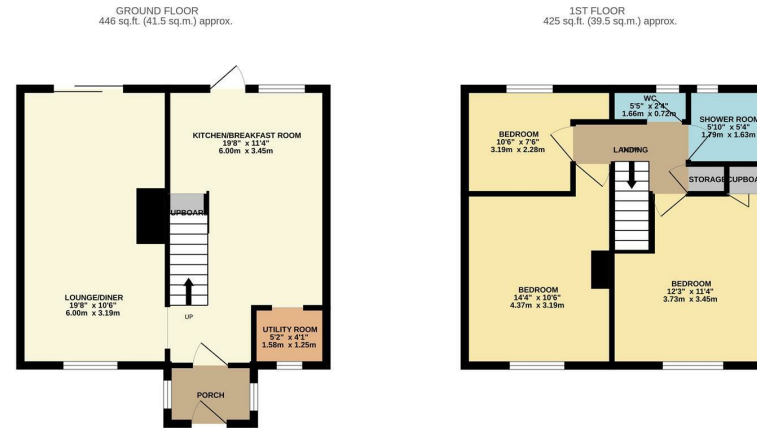


Potters Field, Harlow, CM17 9DD  
£335,000

3 1 1 D

# Potters Field, Harlow, CM17 9DD

A three bedroom terraced house backing onto Harlow Common. The property is situated over-looking a green and comprises an entrance hall leading to a lounge/diner, kitchen/breakfast room with a range of fitted wall & base level units, utility area, landing, three bedrooms and a shower room with a separate WC. Outside the rear garden is southerly facing and is mostly laid to lawn with a patio area. Potters Field is a popular area located just off of Potter Street and offers local shops and schools nearby.



REYLAND,JOHNSON/FP  
TOTAL FLOOR AREA : 872 sq.ft. (81.0 sq.m.) approx.  
Whilst every attempt has been made to ensure the accuracy of the floorplans contained herein, measurements of doors, windows, rooms and any other items are approximate and no responsibility is taken for any error or omission in measurement. The plan is for illustrative purposes only and should be used as a guide only by any prospective purchaser. The services, systems and appliances shown have not been tested and no guarantee as to their operability or efficiency can be given.  
Made with Metrepx. ©2024



Energy Efficiency Rating		Current	Potential
Very energy efficient - lower running costs			
(92 plus) <b>A</b>			
(81-91) <b>B</b>			
(69-80) <b>C</b>			
(55-68) <b>D</b>			
(39-54) <b>E</b>			
(21-38) <b>F</b>			
(1-20) <b>G</b>			
Not energy efficient - higher running costs			
England & Wales	EU Directive 2002/91/EC	64	78

Environmental Impact (CO <sub>2</sub> ) Rating		Current	Potential
Very environmentally friendly - lower CO <sub>2</sub> emissions			
(92 plus) <b>A</b>			
(81-91) <b>B</b>			
(69-80) <b>C</b>			
(55-68) <b>D</b>			
(39-54) <b>E</b>			
(21-38) <b>F</b>			
(1-20) <b>G</b>			
Not environmentally friendly - higher CO <sub>2</sub> emissions			
England & Wales	EU Directive 2002/91/EC		

These particulars, whilst believed to be accurate are set out as a general outline only for guidance and do not constitute any part of an offer or contract. Intending purchasers should not rely on them as statements of representation of fact, but must satisfy themselves by inspection or otherwise as to their accuracy. No person in this firm's employment has the authority to make or give any representation or warranty in respect of the property.

T. 01279 216216 E. info@rjestateagents.co.uk

1 Acorn Mews, Harlow, Essex, CM18 6NA www.rjestateagents.co.uk