

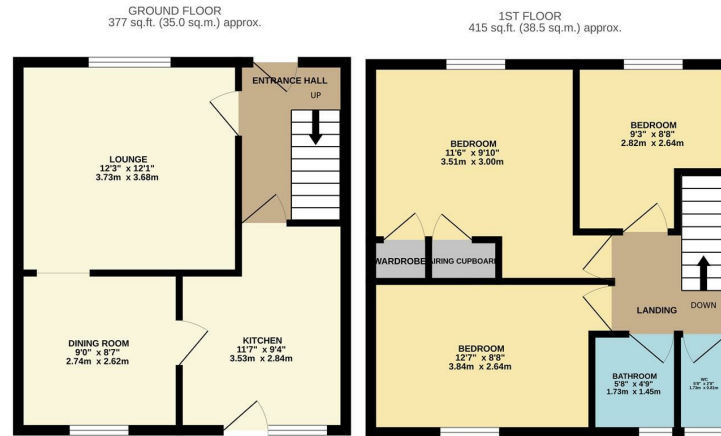


Potters Field, Harlow, CM17 9DE
£300,000

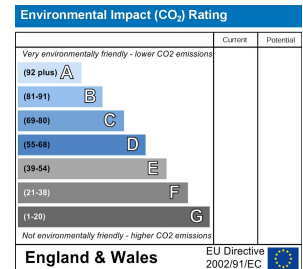
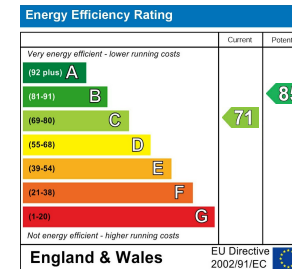
3 1 2 C

Potters Field, Harlow, CM17 9DE

Located at the end of a quiet cul-de-sac and backing onto Harlow Common is this CHAIN FREE three bedroom family home with potential for a driveway on the front (STP). On the ground floor there is an entrance hallway leading to a lounge, dining room and kitchen with a range of fitted wall and base units, whilst upstairs there are three bedrooms with a family bathroom and separate WC. Outside the rear garden is mainly laid to lawn with a patio area, side access and rear access to the Common, whilst to the front there is a garden (potential driveway). Potters Field is located just off Red Lion Lane, within walking distance of local schools, shops and open fields.



PFIREYLANDJOHNSON
 TOTAL FLOOR AREA: 791 sq.ft. (73.5 sq.m.) approx.
 Whilst every attempt has been made to ensure the accuracy of the floorplan contained here, measurements of doors, windows, rooms and any other items are approximate and no responsibility is taken for any error, omission or mis-statement. This plan is for illustrative purposes only and should be used to guide only by any prospective purchaser. The services, systems and appliances shown have not been tested and no guarantee as to their operability or efficiency can be given.
 Made with Metropix ©2024



These particulars, whilst believed to be accurate are set out as a general outline only for guidance and do not constitute any part of an offer or contract. Intending purchasers should not rely on them as statements of representation of fact, but must satisfy themselves by inspection or otherwise as to their accuracy. No person in this firm's employment has the authority to make or give any representation or warranty in respect of the property.

T. 01279 216216 E. info@rjestateagents.co.uk

1 Acorn Mews, Harlow, Essex, CM18 6NA www.rjestateagents.co.uk