

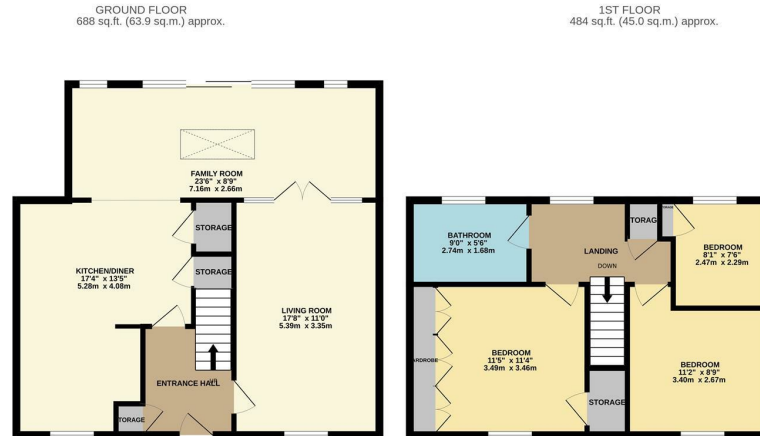


Broomfields, Hatfield Heath, CM22 7EH
£1,750 Per Month

3 1 3

Broomfields, Hatfield Heath, CM22 7EH

A three bedroom terrace home in a popular location, overlooking a small green. The property is presented to a good standard throughout and has an entrance hall, lounge, large kitchen/dining room which has a range of fitted wall and base units, oven & dish washer and there is also a full width family room overlooking the rear garden. The first floor has three good size bedrooms and a family bathroom, other benefits include off road parking, generous garden and lots of storage. Available NOW on unfurnished basis.



TOTAL FLOOR AREA: 1172 sq.ft. (108.9 sq.m.) approx.
 Whilst every attempt has been made to ensure the accuracy of the floorplan contained here, measurements of doors, windows, rooms and any other items are approximate and no responsibility is taken for any error, omission or mis-statement. This plan is for illustrative purposes only and should be used as such by any prospective purchaser. The services, systems and appliances shown have not been tested and no guarantee as to their operability or efficiency can be given.
 Made with Mirograph ©2024

Energy Efficiency Rating			Environmental Impact (CO ₂) Rating		
Rating	Current	Potential	Rating	Current	Potential
Very energy efficient - lower running costs			Very environmentally friendly - lower CO ₂ emissions		
(92 plus) A			(81-91) A		
(81-91) B			(69-80) B		
(69-80) C			(55-68) C		
(55-68) D			(39-54) D		
(39-54) E			(21-38) E		
(21-38) F			(1-20) F		
(1-20) G			Not environmentally friendly - higher CO ₂ emissions		
Not energy efficient - higher running costs			England & Wales	EU Directive 2002/91/EC	EU Directive 2002/91/EC

These particulars, whilst believed to be accurate are set out as a general outline only for guidance and do not constitute any part of an offer or contract. Intending purchasers should not rely on them as statements of representation of fact, but must satisfy themselves by inspection or otherwise as to their accuracy. No person in this firm's employment has the authority to make or give any representation or warranty in respect of the property.

T. 01279 216216 E. info@rjestateagents.co.uk

1 Acorn Mews, Harlow, Essex, CM18 6NA www.rjestateagents.co.uk