



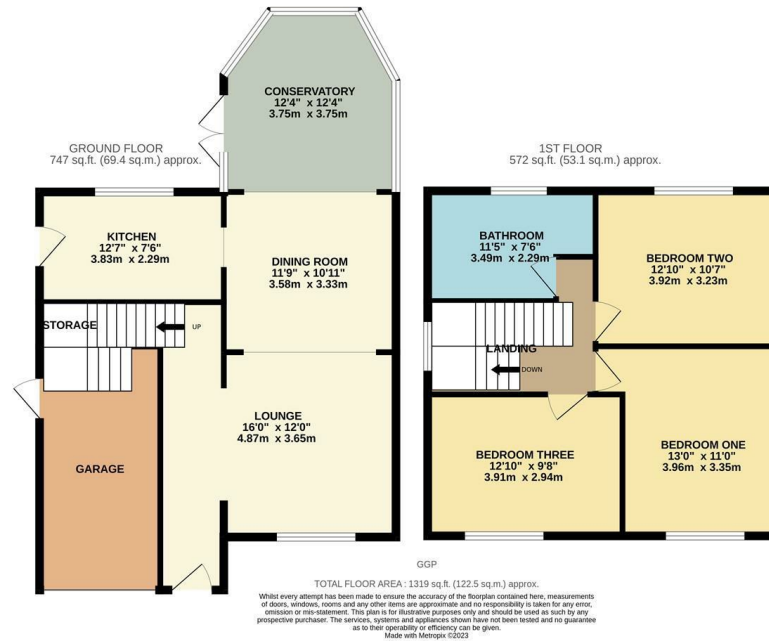
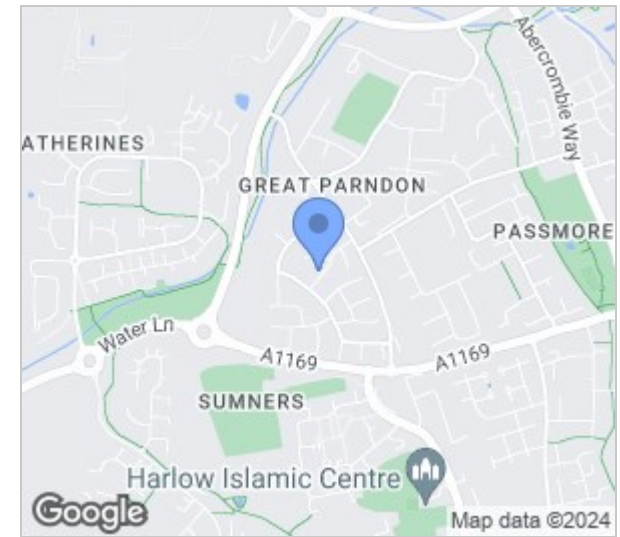
Greygoose Park, Harlow, CM19 4JP  
Guide Price £500,000

3 1 2 D

A set of icons representing property features: a bed icon for 3 bedrooms, a bathtub icon for 1 bathroom, a sofa icon for 2 sofas, and a garage icon with a lightbulb for a double garage.

# Greygoose Park, Harlow, CM19 4JP

GUIDE PRICE: £500,000 - £525,000. Situated in one of Harlow's premier locations is this stunning detached family home. The property has a well maintained fitted kitchen with a range of wall and base units and an open plan feel to the ground floor with combined living, dining and conservatory areas. Upstairs offers three double bedrooms and a modern bathroom with a white three piece-suite and separate shower cubical. The garden is of good size and part paved but mostly laid to lawn over two levels. Greygoose Park is located just off of Kingsmoor Road and is a popular family area with local shops and schools nearby.



Energy Efficiency Rating		Current	Potential
Very energy efficient - lower running costs			
(92 plus)	A		
(81-91)	B		
(69-80)	C		
(55-68)	D		
(39-54)	E		
(21-38)	F		
(1-20)	G		
Not energy efficient - higher running costs			
England & Wales		63	74
	EU Directive 2002/91/EC		

Environmental Impact (CO <sub>2</sub> ) Rating		Current	Potential
Very environmentally friendly - lower CO <sub>2</sub> emissions			
(92 plus)	A		
(81-91)	B		
(69-80)	C		
(55-68)	D		
(39-54)	E		
(21-38)	F		
(1-20)	G		
Not environmentally friendly - higher CO <sub>2</sub> emissions			
England & Wales			
	EU Directive 2002/91/EC		

These particulars, whilst believed to be accurate are set out as a general outline only for guidance and do not constitute any part of an offer or contract. Intending purchasers should not rely on them as statements of representation of fact, but must satisfy themselves by inspection or otherwise as to their accuracy. No person in this firm's employment has the authority to make or give any representation or warranty in respect of the property.

T. 01279 216216 E. info@rjestateagents.co.uk

1 Acorn Mews, Harlow, Essex, CM18 6NA www.rjestateagents.co.uk