

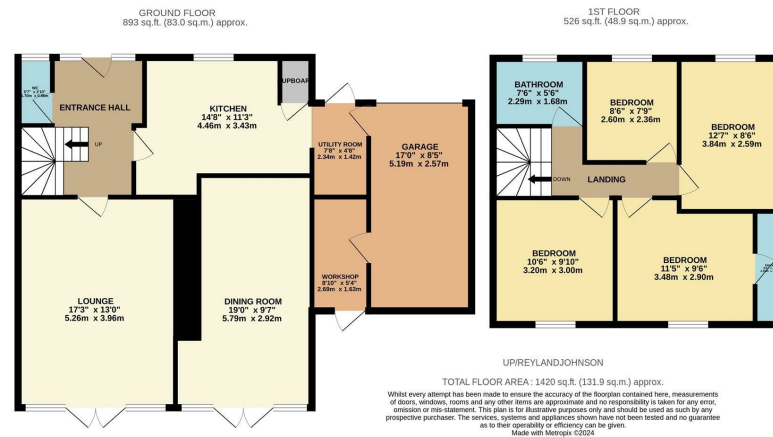


Upper Park, Harlow, CM20 1TN
£550,000

4 2 2 D

Upper Park, Harlow, CM20 1TN

Offered with no onward chain is this well presented four bedroom semi detached family home with lots of potential to extend or potentially develop. On the ground floor there is an entrance hallway leading to an extended lounge and dining room, modern kitchen with a range of fitted wall and base units, utility room, cloakroom/WC and access to the garage and workshop. Upstairs there are four bedrooms, with an en-suite to the master and a family bathroom with a modern white three piece suite. Outside, the south facing large rear garden is un overlooked and mainly laid to lawn with a patio area and access to the side and to the workshop. The property is located at the end of a quiet cul-de-sac in Upper Park, within walking distance of Princess Alexandra Hospital, Harlow Town Centre and local schools and shops, with a forest area and Oakwood Pond behind.



Energy Efficiency Rating		
	Current	Potential
Very energy efficient - lower running costs		
(92 plus) A		
(81-91) B		82
(69-80) C		
(55-68) D	66	
(39-54) E		
(21-38) F		
(1-20) G		
Not energy efficient - higher running costs		
England & Wales	EU Directive 2002/91/EC	

Environmental Impact (CO ₂) Rating		
	Current	Potential
Very environmentally friendly - lower CO ₂ emissions		
(92 plus) A		
(81-91) B		
(69-80) C		
(55-68) D		
(39-54) E		
(21-38) F		
(1-20) G		
Not environmentally friendly - higher CO ₂ emissions		
England & Wales	EU Directive 2002/91/EC	

These particulars, whilst believed to be accurate are set out as a general outline only for guidance and do not constitute any part of an offer or contract. Intending purchasers should not rely on them as statements of representation of fact, but must satisfy themselves by inspection or otherwise as to their accuracy. No person in this firm's employment has the authority to make or give any representation or warranty in respect of the property.

T. 01279 216216 E. info@rjestateagents.co.uk

1 Acorn Mews, Harlow, Essex, CM18 6NA www.rjestateagents.co.uk