



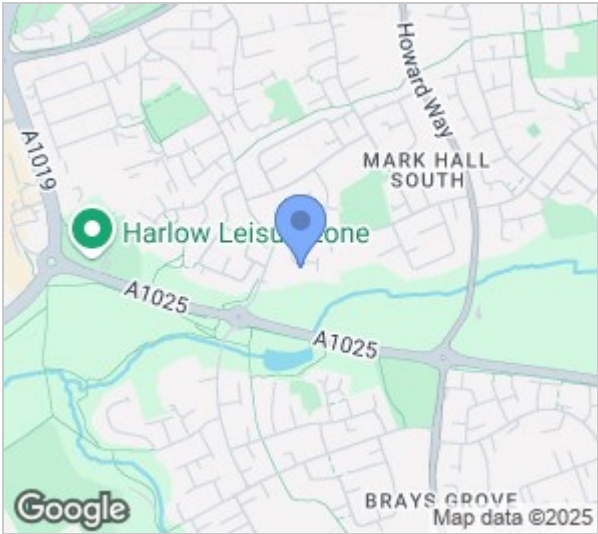
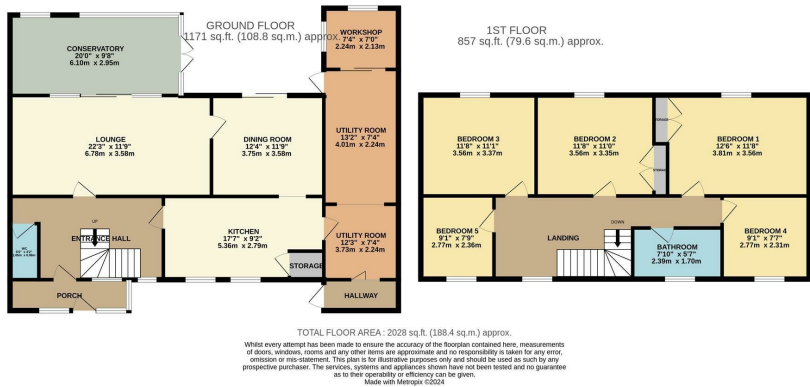
Home Close, Harlow, CM20 3PD  
£585,000





# Home Close, Harlow, CM20 3PD

Rarely available five bedroom detached family home in a little known cul-de-sac of Home Close. The property offers ample living accommodation comprising of a large 22ft lounge, separate dining room, well looked after kitchen with a range of wall and base units, downstairs cloakroom, good size conservatory, utility room and a home made work shop area. Upstairs offers five well proportioned bedrooms three of which are comfortable doubles and a well maintained shower room. The front of the property offers a garage and driveway parking with the potential for further parking. The garden is un-overlooked backing onto allotments and mostly laid to lawn split into two sections. Home Close is located within walking distance of local schools, shops, open fields, Harlow Town Centre and Harlow Town Train station.



Energy Efficiency Rating			Environmental Impact (CO <sub>2</sub> ) Rating		
	Current	Potential		Current	Potential
Very energy efficient - lower running costs					
(92 plus) <b>A</b>			(92 plus) <b>A</b>		
(81-91) <b>B</b>			(81-91) <b>B</b>		
(69-80) <b>C</b>			(69-80) <b>C</b>		
(55-68) <b>D</b>			(55-68) <b>D</b>		
(39-54) <b>E</b>			(39-54) <b>E</b>		
(21-38) <b>F</b>			(21-38) <b>F</b>		
(1-20) <b>G</b>			(1-20) <b>G</b>		
Not energy efficient - higher running costs					
England & Wales			England & Wales		
EU Directive 2002/91/EC			EU Directive 2002/91/EC		

These particulars, whilst believed to be accurate are set out as a general outline only for guidance and do not constitute any part of an offer or contract. Intending purchasers should not rely on them as statements of representation of fact, but must satisfy themselves by inspection or otherwise as to their accuracy. No person in this firms employment has the authority to make or give any representation or warranty in respect of the property.