



6 Howard Road, Seer Green

Guide Price £1,290,000

*Ashington Page*



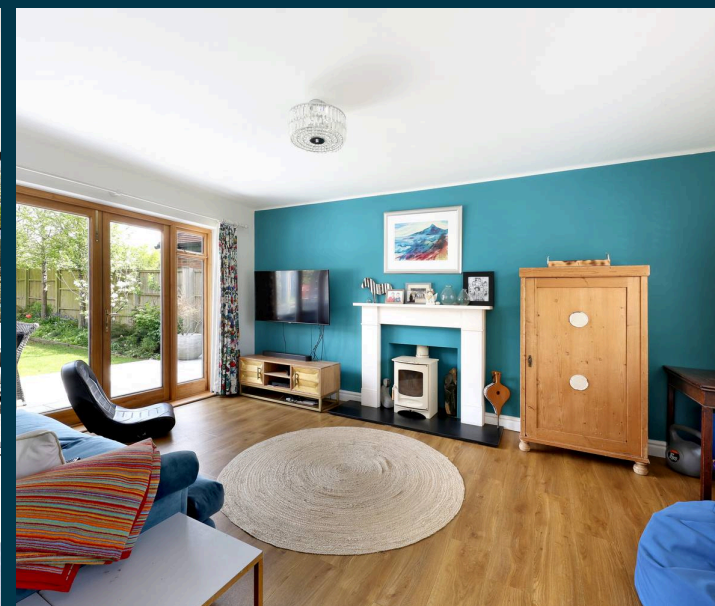
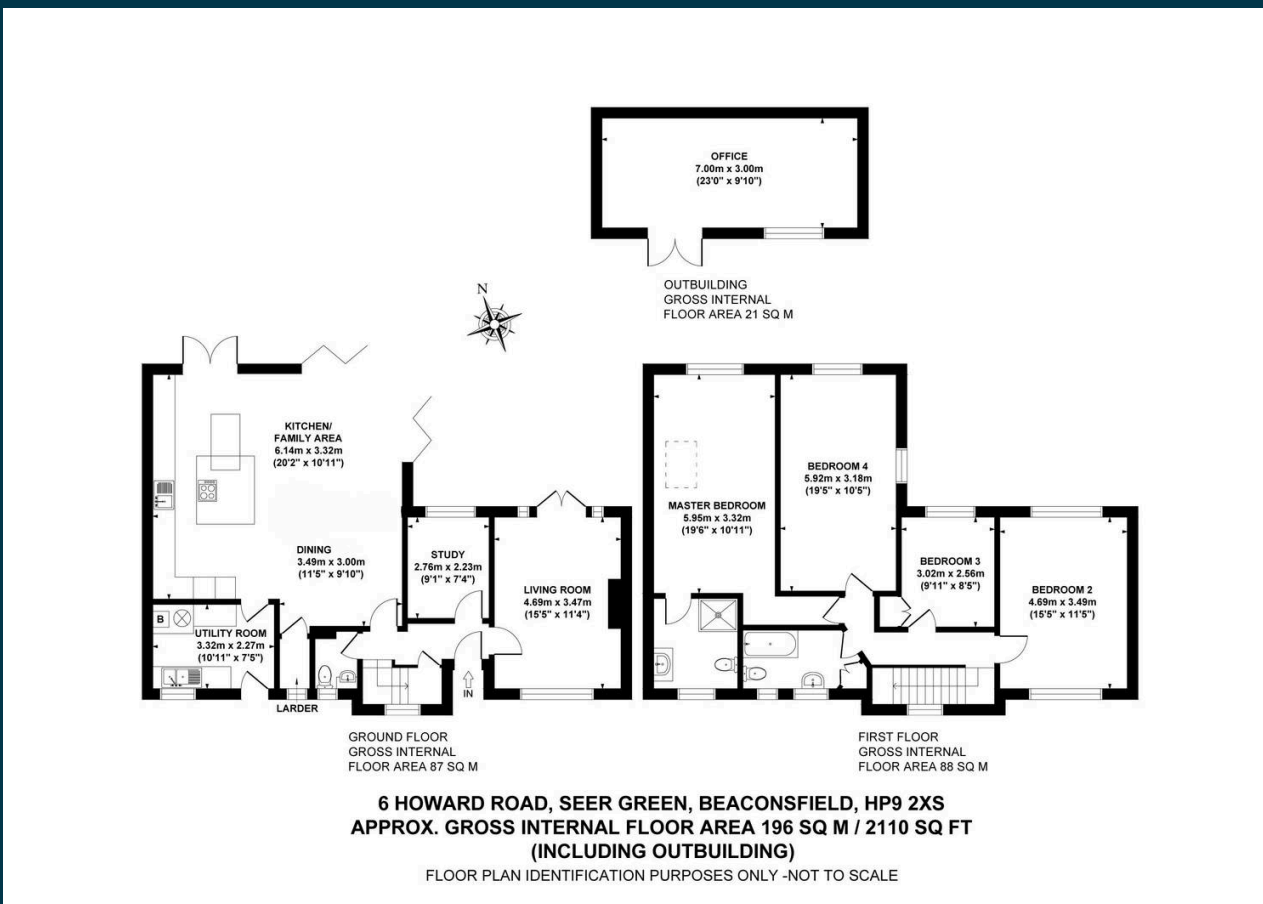
## A Stunning Family Home in Seer Green.

Discover this beautifully extended and fully refurbished four-bedroom detached family home, perfectly positioned for effortless access to outstanding local schools in the highly desirable Seer Green area. Families will appreciate the proximity to Monkey Puzzle Seer Green Day Nursery and Preschool, as well as Seer Green C of E Combined School—both just a 2-minute walk away.

Don't miss this unique opportunity to own a beautifully modernized family home in one of Buckinghamshire's most desirable locations. Contact us today to arrange a viewing.

- EPC: D
- Council Tax Band :G

These particulars are for guidance only. They are prepared and issued in good faith and are intended to give a fair summary of the property. Any description should not be relied on as a statement or representation of fact or that the property, or its services, are in good condition. The photographs show only certain parts of the property at the time they were taken. Any areas, measurements or distance given are approximate only. Any reference to alterations to, or use of, any part of the property is not a statement that any necessary planning, building regulations or other consent has been obtained. These matters must be verified by an intending purchaser. All statements contained in these particulars in relation to the property are made without responsibility of Ashington Page or its clients. Neither Ashington Page (nor any joint agents) nor any of their employees has any authority to make or give any representation or warranty whatsoever in relation to the property



01494 680018  
 info@ashingtonpage.co.uk  
 www.AshingtonPage.co.uk

