



25  
YEARS

SERVING  
BEACONSFIELD  
SINCE 1998

Flat 5, Gomms Wood House Cherry Drive, Forty Green

In Excess of £700,000

*Ashington Page*

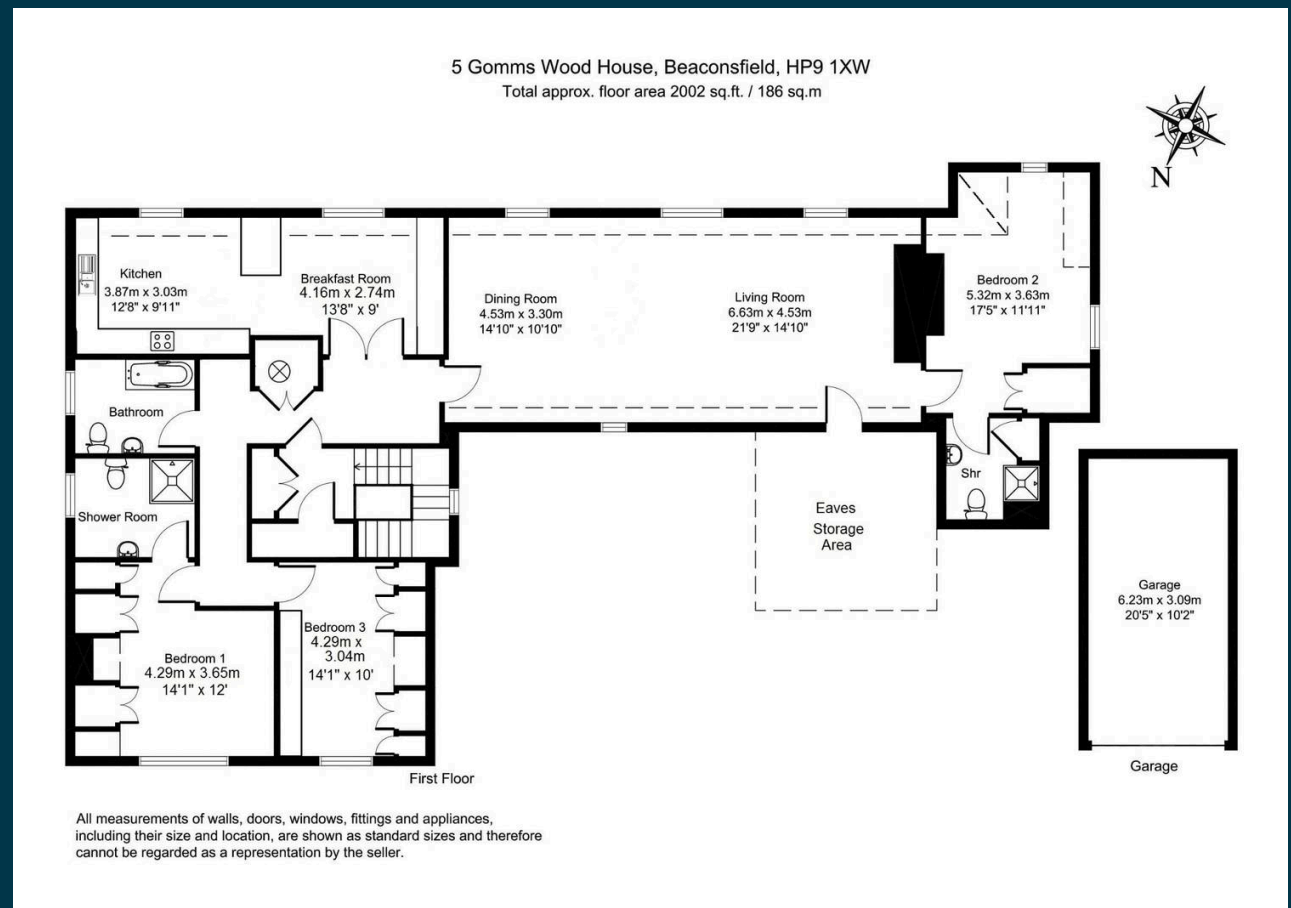
CHAIN FREE! This unique, large and spacious loft apartment with views has over 2000 square feet of character and charm and is set in beautiful tranquil gardens in a semi-rural setting. It is one of only five apartments and occupies the entire top floor of Gomms Wood House. It is within easy walking distance of Beaconsfield New Town with it's many shops and the mainline station with fast trains to London Marylebone.

Council Tax : Band F EPC : D

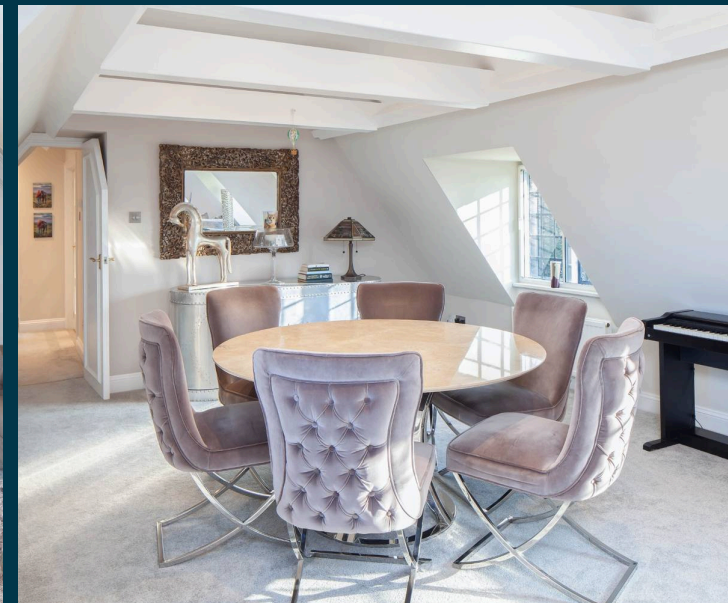
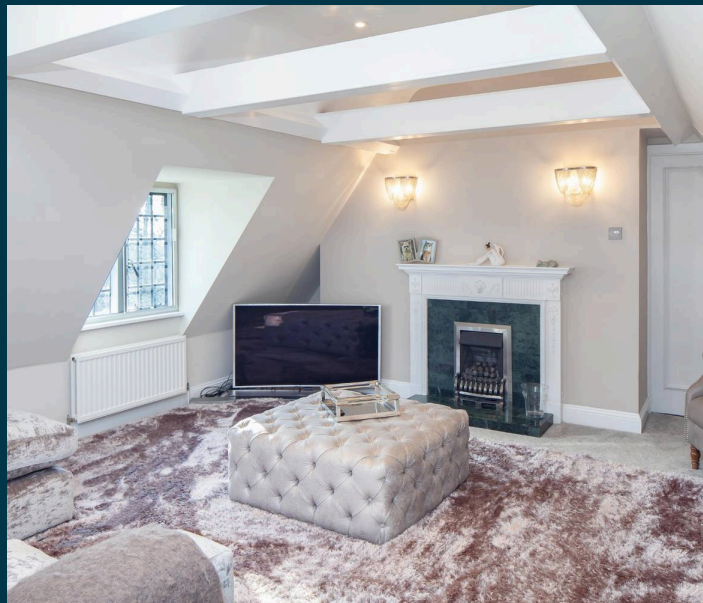
Service charge : £297 pcm Ground rent : £0

Share of the freehold

Lease : 125 year lease from 1984. Each apartment has an equal share of freehold.



These particulars are for guidance only. They are prepared and issued in good faith and are intended to give a fair summary of the property. Any description should not be relied on as a statement or representation of fact or that the property, or its services, are in good condition. The photographs show only certain parts of the property at the time they were taken. Any areas, measurements or distance given are approximate only. Any reference to alterations to, or use of, any part of the property is not a statement that any necessary planning, building regulations or other consent has been obtained. These matters must be verified by an intending purchaser. All statements contained in these particulars in relation to the property are made without responsibility of Ashington Page or its clients. Neither Ashington Page (nor any joint agents) nor any of their employees has any authority to make or give any representation or warranty whatsoever in relation to the property



01494 680018  
info@ashingtonpage.co.uk  
www.AshingtonPage.co.uk



















