



Wood Dean, Jordans



Ashington Page



Welcome to Wood Dean, a stunning property situated in a peaceful, wooded area. This home offers luxurious living spaces and unparalleled comfort. The property is accessible via a long driveway that leads to a parking area with two car charging points, plus additional parking for guests.

The covered porch leads into a welcoming entrance hall with beautiful flooring and a convenient under-stairs cupboard.

From the hall, double doors open to the main highlight: a practical yet stylish open-plan kitchen, dining, and living area. Three sets of French doors open onto the patio, providing lovely views of the garden.

The kitchen will appeal to those who enjoy cooking, featuring a range of base units with granite worktops and a Stoves Range cooker with an extractor fan. It includes a central island with a sink and Quooker tap, functioning as a breakfast bar, while a walk-in larder adds a touch of convenience.

The sitting room exudes warmth and charm, with a double aspect and a large Inglenook style fireplace with a wood burning stove, ideal for relaxing.

There is also a versatile reception room that can be used as a bedroom or office, complete with built-in storage.

The spacious utility room and a wc complete the ground floor accommodation.





Ascend the stairs to discover a generous landing leading to the principal bedroom, featuring a walk-through dressing area and vaulted ceiling. French doors with a Juliet balcony overlook the garden, and an ensuite shower room adds a touch of luxury. Two additional bedrooms on this floor share a Jack and Jill shower room and have vaulted ceilings and French doors opening to Juliet balconies. A fourth bedroom on this floor is serviced by the luxurious family bathroom.

The second floor houses another ensuite bedroom with a dressing area, offering additional space and comfort.

The property includes a detached double garage with office space to the rear and a fully self-contained annex above offer additional living options, including a sitting room, kitchen area, separate bedroom, and ensuite shower room.

Outside, a wide expanse of patio beckons for al fresco dining and entertaining, with steps leading down to the landscaped garden with lush lawns, vibrant borders, mature trees, and a wildflower meadow with orchard. A special feature of the garden is the attractive pond, complete with Pergola and Monet style bridge creating a quiet haven to relax and unwind at the end of the day.

Wood Dean is a well-crafted home that balances comfort and elegance, offering a serene lifestyle in a beautiful setting.

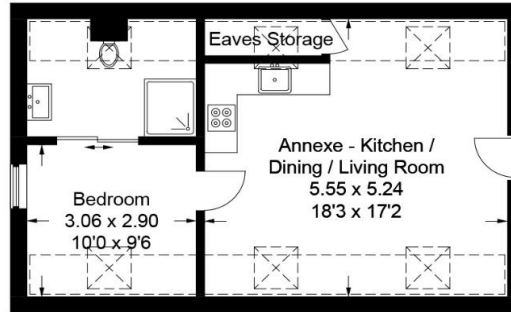
Freehold

EPC: C

Council Tax Band: G

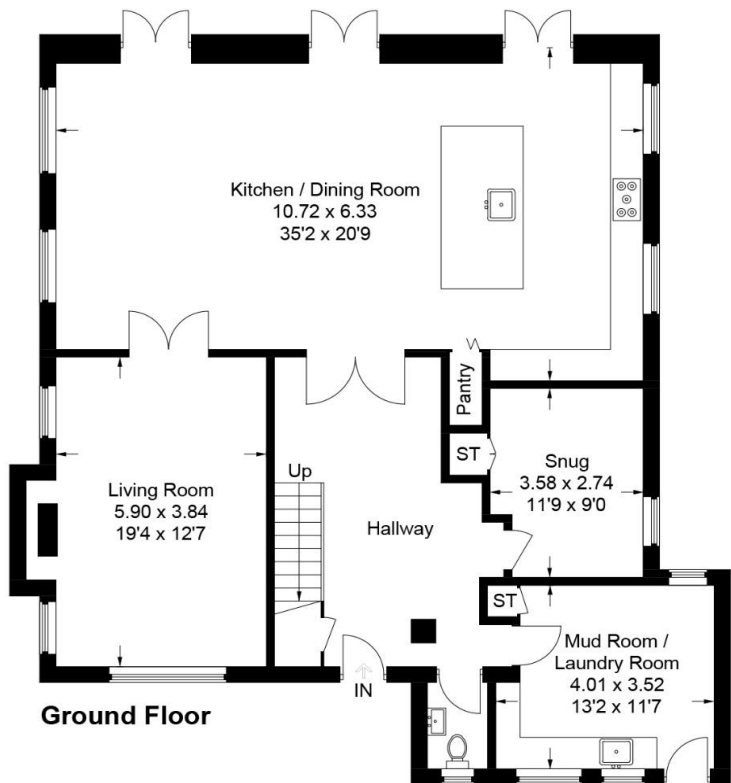


Approximate Gross Internal Area = 299.1 sq m / 3219 sq ft (Excluding Void)
 Outbuilding = 93.5 sq m / 1006 sq ft
 Total = 392.6 sq m / 4225 sq ft

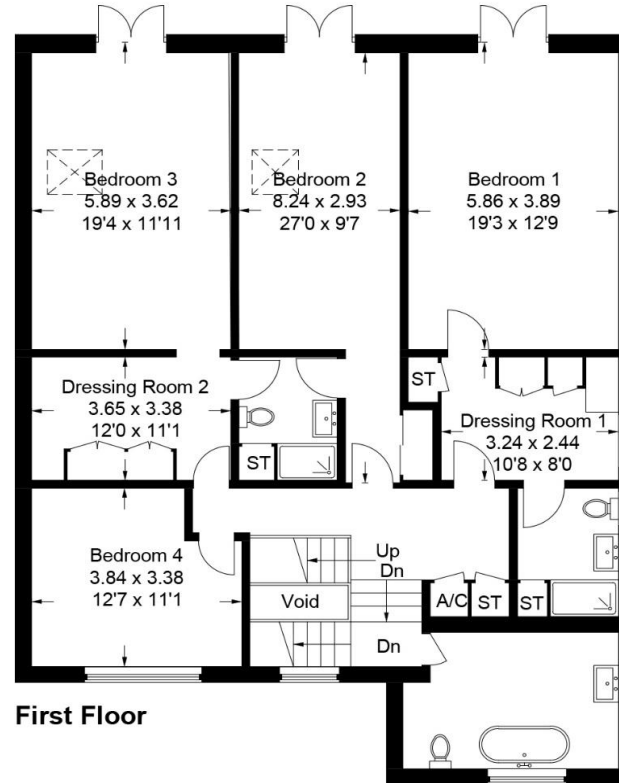


= Reduced headroom below 1.5m / 5'0

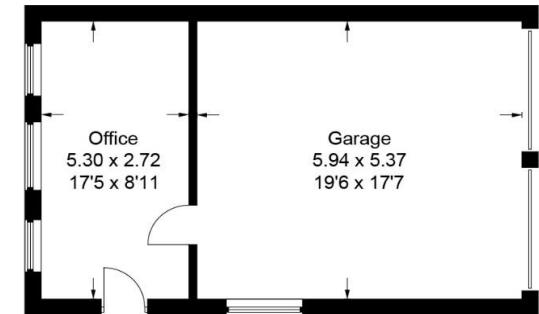
Annexe - First Floor



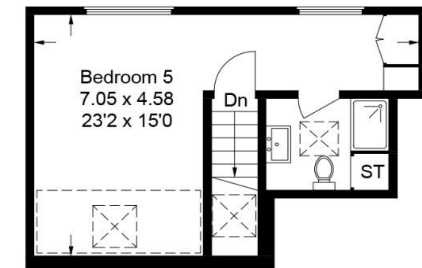
Ground Floor



First Floor



Annexe - Ground Floor



Second Floor

This plan is for layout guidance only. Not drawn to scale unless stated. Windows and door openings are approximate. Whilst every care is taken in the preparation of this plan, please check all dimensions, shapes and compass bearings before making any decisions reliant upon them.





For an appointment to view this property, please contact Ashington
Page

on

01494 680 018



Important Notice: These particulars are for guidance only. They are prepared and issued in good faith and are intended to give a fair summary of the property. Any description or information should not be relied on as a statement or representation of fact or that the property or its services are in good condition. The photographs show only certain parts of the property at the time they were taken. Any areas, measurements or distance given are approximate only. Any reference to alterations to or use of, any part of the property is not a statement that any necessary planning, building regulations or other consent has been obtained. These matters must be verified by an intending purchaser. All statements contained in these particulars in relation to the property are made without responsibility of Ashington page or its clients. Neither Ashington Page (nor any joint agents) nor any of their employees has any authority to make or give any representation or warranty whatsoever in relation to the property.

Should you decide to use James Walton, Park Grove Mortgages Limited, you should know that we would normally receive a referral fee from him on completion of a transaction. An average referral fee is typically

www.AshingtonPage.co.uk

Ashington Page