

HOLLAND ROAD W14

£975,000



WILFORDS
LONDON

6 Holland Street, W8 4LT
info@wilfords.com

+44 (0)20 7361 0400

wilfords.com



HOLLAND ROAD W14

£975,000

804 SQ FT / 74.7 SQ M | 2 BEDROOMS |
ACCESS TO COMMUNAL GARDENS | LEASEHOLD: 165 YEARS |
KENSINGTON AND CHELSEA ROYAL BOROUGH COUNCIL

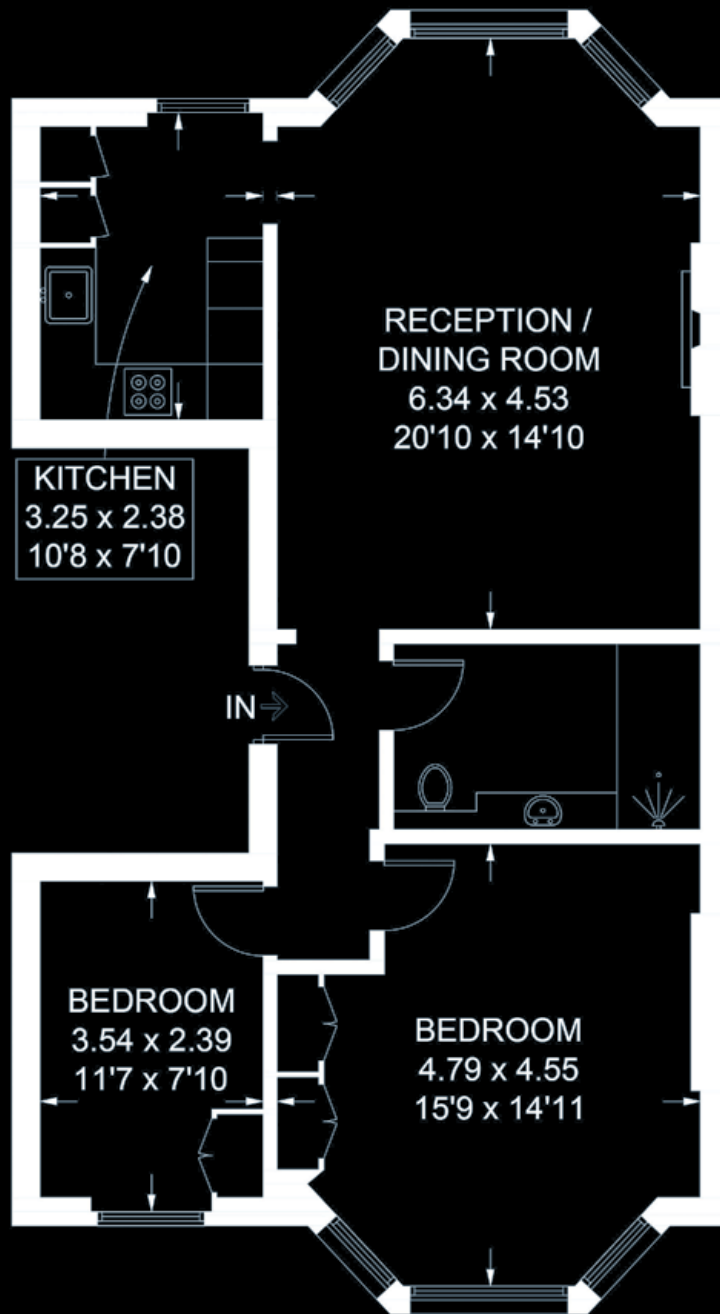
A beautifully appointed first floor apartment located in a handsome stucco fronted Victorian terrace house with rear views and access to the communal gardens. The property is ideally positioned at the southern end of the road just moments from the superb array of cafes, shops and restaurants on Kensington High Street, whilst Holland Park Avenue and Westfield are also close by.

Holland Road runs north of Kensington High Street to Holland Park roundabout, the flat is approx. five minutes' walk from the tennis courts and gardens at Holland Park. Westfield shopping centre is a five minute drive away as are the exclusive boutiques, coffee shops and food shops of Holland Park Avenue.

Service charge: £1,150



Approximate Gross Internal Area = 74.7 sq m / 804 sq ft



FIRST FLOOR

Viewing: Strictly by appointment with Wilfords London +44 (0)20 7361 0400

APPROX. GROSS INTERNAL FLOOR AREA 804 SQ FT / 74.7 SQ M

Floor plan for identification purposes only - not to scale

IMPORTANT NOTICE:

In accordance with the property misdescriptions act 1991 these details, photographs and floor plans have been prepared in good faith and as a general guide not a statement of fact. Neither do they constitute part of an offer or contract. We have not carried out a survey and the services, appliances and specific fittings have not been tested. Measurements are approximate. We would recommend if there are any particular points that concern you these should be checked with a member of staff, especially if travelling some distance, before you leave to view a property.

WILFORDS
LONDON

6 Holland Street, W8 4LT
info@wilfords.com

+44 (0)20 7361 0400

wilfords.com