



Kenward Court, Hadlow, Tonbridge, Kent, TN11 0DX

Guide Price £425,000 - £450,000

When experience counts...

est. 1828
bracketts

Offered for sale is this spacious three-bedroom end terrace with a Grade II Listed arch to front & set within a courtyard style setting. Tucked away off the main road, the property benefits from being within close proximity to the Village Centre which offers a variety of local amenities such as doctors surgery, bakery, hairdressers and coffee shop. Internally the property comprises entrance hallway, downstairs cloakroom and coat cupboard, large reception room and kitchen / breakfast room. To the first floor there are three bedrooms and a family bathroom. Externally there is a garage en block opposite within the courtyard with space for parking to the front. To the rear is a well maintained low maintenance garden with artificial lawn, patio seating area mature borders, patio and lawned areas. There is also space to the side with large shed. This property is being offered with no onward chain and we thoroughly recommend an internal viewing to appreciate this spacious home.

Three Bedrooms

Central Village Location

Close To Local Amenities

Large Sitting Room

Cloakroom WC

Kitchen / Breakfast Room

Family Bathroom

Garage & Parking

Private Courtyard Location

Viewing Highly Recommended





LOCATION: Tonbridge

Tonbridge is a thriving market town that has developed over the centuries. It boasts a fine example of a 'Motte and Bailey' Norman castle built in the 13th century, set on the banks of the river Medway with the castle grounds abutting Tonbridge Park offering covered/open air swimming pool, tennis courts, childrens' play areas, miniature railway, putting etc.

Tonbridge town offers an excellent range of retail and leisure activities with many High Street stores, together with a selection of coffee shops, restaurants and local inns.

The mainline station provides fast commuter links into London (Cannon Street/London Bridge/Charing Cross in approximately 40 minutes) with road links to the M20 & M25 motorways via the nearby A26 and A21.

Tonbridge offers first-rate primary and secondary schools (including Grammars and Public Schools) many of which consistently do well in the league tables. There are many places of historical interest in the surrounding areas including Penshurst Place and Gardens, Hever Castle, Knole House and Chartwell (once home to Winston Churchill).

ADDITIONAL INFORMATION:

Council Tax Band E

Double Glazed Windows

Score	Energy rating	Current	Potential
92+	A		
81-91	B		81 B
69-80	C		
55-68	D	63 D	
39-54	E		
21-38	F		
1-20	G		



Important Notice: Bracketts, their clients and any joint agents give notice that they have no authority to make or give any representations or warranties in relation to the property. These particulars do not form part of any offer or contract and must not be relied upon as statements or representations of fact. The text, photographs and plans are for guidance only and are not necessarily comprehensive. All areas, measurements or distances are approximate and no responsibility is taken for any error, omission or mis-statement. It should not be assumed that the property has necessary planning, building regulation or other consents and Bracketts have not tested any services, appliances, equipment or facilities. Purchasers must satisfy themselves by inspection or otherwise. Prices, rents or any other charges are exclusive of VAT unless stated to the contrary.

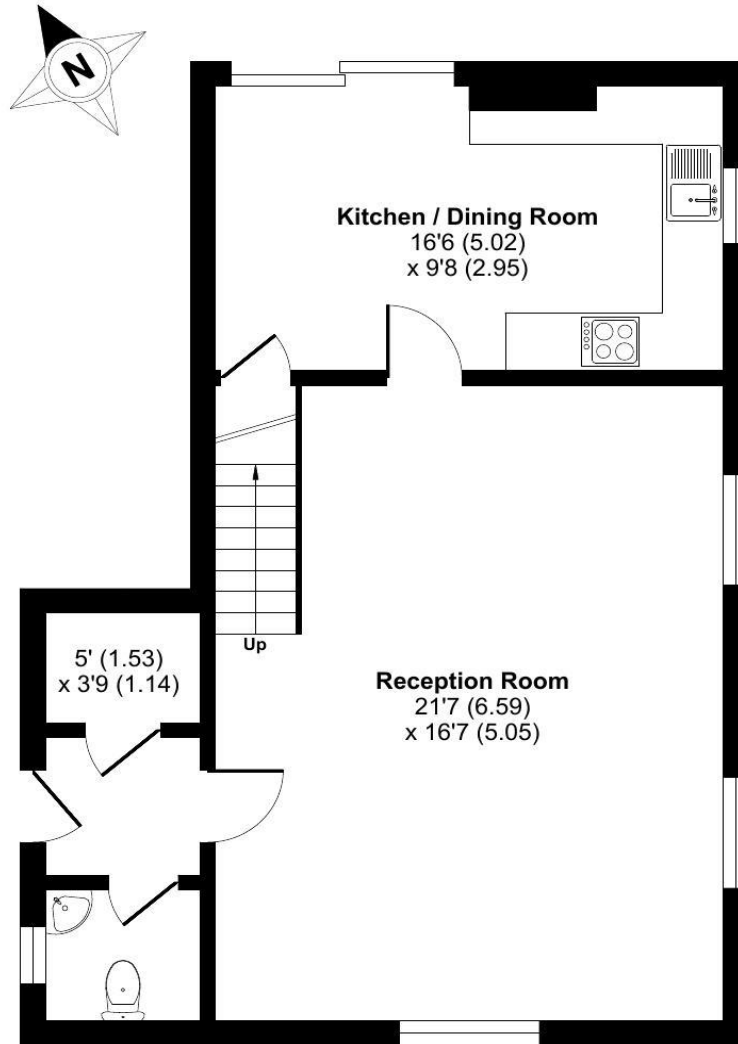
Kenward Court, Hadlow, Tonbridge, TN11

Approximate Area = 1130 sq ft / 104.9 sq m

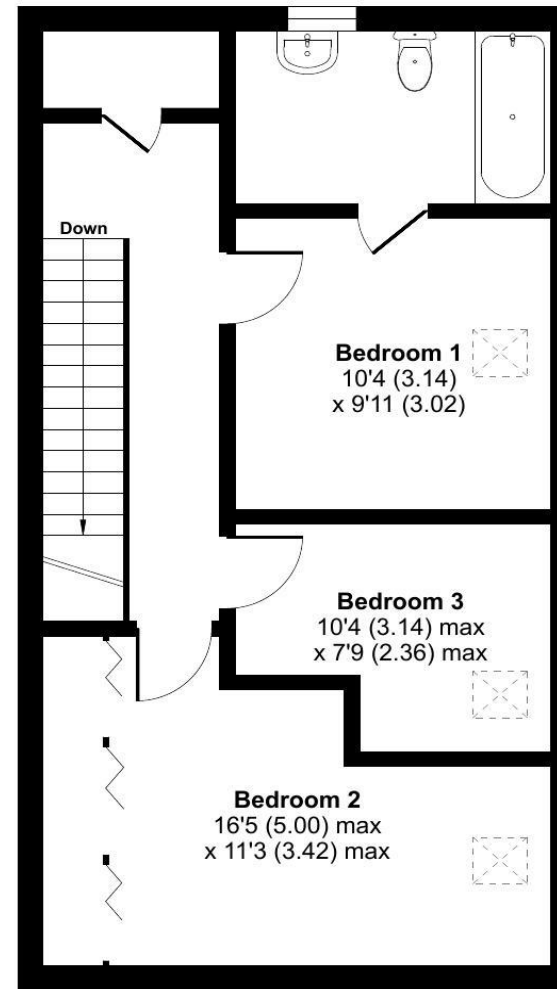
Garage = 146 sq ft / 13.5 sq m

Total = 1276 sq ft / 118.4 sq m

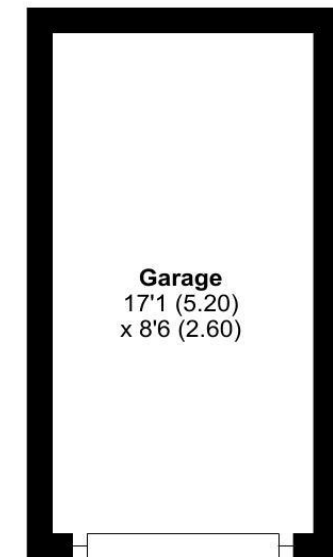
For identification only - Not to scale



GROUND FLOOR



FIRST FLOOR



GARAGE

Floor plan produced in accordance with RICS Property Measurement 2nd Edition, Incorporating International Property Measurement Standards (IPMS2 Residential). © n°cheom 2025. Produced for Bracketts llp. REF: 1293807