



Three Elm Lane, Golden Green, Tonbridge, Kent, TN11 0BE

Guide Price £775,000

When experience counts...

est. 1828
bracketts

Brackets are delighted to offer for sale this well presented and unique Dutch Barn style, three-bedroom detached family home situated in the popular Hamlet of Golden Green. Internally the property comprises entrance hall with downstairs cloakroom, a lovely size kitchen / dining space with vaulted ceiling and patio doors opening up onto the garden, large living room and a study. Upstairs there are three double bedrooms, ensuite to the principle bedroom and family bathroom. Outside there is a driveway with off road parking for multiple cars to the front and to the rear is a good sized garden, mainly laid to lawn and large patio seating area ideal for entertaining outdoors. The property benefits from its semi-rural location with gorgeous countryside views from the front of the property, as well as beautiful country walks right on your doorstep. The Hamlet benefits from being just a short drive to Tonbridge town centre which offers a range of local shops, supermarkets, cafés, bars and restaurants and Tonbridge mainline station providing great links into London. The property is being sold with no onward chain and an internal inspection comes highly recommended to appreciate the space this home has to offer.

Detached Home

Three Bedrooms

Kitchen / Dining Room

Large Living Room

Study

Ensuite To Principle Bedroom

Family Bathroom

Driveway

Rear Garden

No Onward Chain





LOCATION: Tonbridge

Tonbridge is a thriving market town that has developed over the centuries. It boasts a fine example of a 'Motte and Bailey' Norman castle built in the 13th century, set on the banks of the river Medway with the castle grounds abutting Tonbridge Park offering covered/open air swimming pool, tennis courts, childrens' play areas, miniature railway, putting etc.

Tonbridge town offers an excellent range of retail and leisure activities with many High Street stores together with a selection of coffee shops, restaurants and local inns.

The mainline station provides fast commuter links into London (Cannon Street/London Bridge/Charing Cross in approximately 40 minutes) with road links to the M20 & M25 motorways via the nearby A26 and A21.

Tonbridge offers first-rate primary and secondary schools (including Grammars and Public Schools) many of which consistently do well in the league tables. There are many places of historical interest in the surrounding areas including Penshurst Place and Gardens, Hever Castle, Knole House and Chartwell (once home to Winston Churchill).

ADDITIONAL INFORMATION:

Council Tax Band F
Double Glazed Windows

Score	Energy rating	Current	Potential
92+	A		
81-91	B		81 B
69-80	C	69 C	
55-68	D		
39-54	E		
21-38	F		
1-20	G		

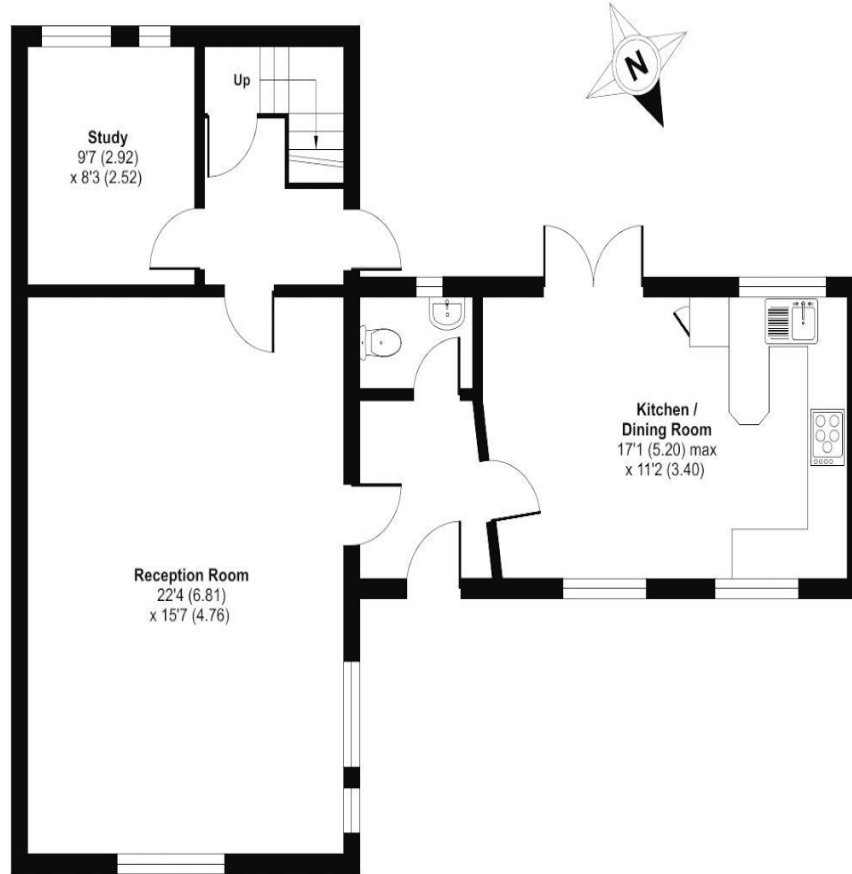


Important Notice: Bracketts, their clients and any joint agents give notice that they have no authority to make or give any representations or warranties in relation to the property. These particulars do not form part of any offer or contract and must not be relied upon as statements or representations of fact. The text, photographs and plans are for guidance only and are not necessarily comprehensive. All areas, measurements or distances are approximate and no responsibility is taken for any error, omission or mis-statement. It should not be assumed that the property has necessary planning, building regulation or other consents and Bracketts have not tested any services, appliances, equipment or facilities. Purchasers must satisfy themselves by inspection or otherwise. Prices, rents or any other charges are exclusive of VAT unless stated to the contrary.

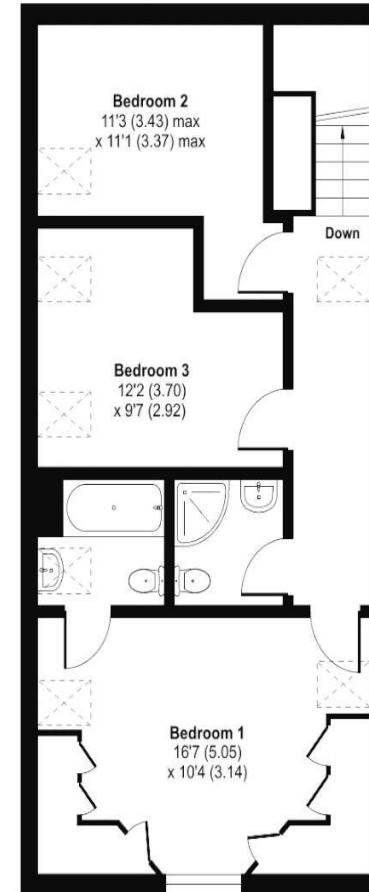
Three Elm Lane, Golden Green, Tonbridge, TN11

Approximate Area = 1349 sq ft / 125.3 sq m

For identification only - Not to scale



GROUND FLOOR



FIRST FLOOR



Floor plan produced in accordance with RICS Property Measurement Standards incorporating International Property Measurement Standards (IPMS2 Residential). © rihcom 2024. Produced for Bracketts llp. REF: 1181268