



Deakin Leas, Tonbridge, Kent, TN9 2JT

Guide Price £795,000

When experience counts...

est. 1828
bracketts

Offered for sale is this immaculately presented detached property forming part of Deakin Leas, a sought after road in South Tonbridge. The property offers flexible accommodation throughout. Situated close to mainline station, the town centre, with all its shops and amenities, and Tonbridge Castle, it is also within the catchment area for coveted schools and close proximity to Tonbridge Park and Haysden Country Park. Internally the property offers flexible accommodation and comprises entrance hall, open plan kitchen / breakfast room leading into a large utility room. There is a large reception room overlooking the garden, five bedrooms and a second bathroom. To the top floor there is a large loft room currently used as a hobby space. Externally there is an integral single garage, driveway and beautiful established gardens to front & rear. The property is offered with no onward chain and we recommend viewing at your earliest convenience.

Five Bedrooms

Detached Bungalow

Sought After Road South Tonbridge

Close to Coveted Schools

Convenient Location For Mainline
Station, Road Networks & Town
Centre

Modern Kitchen Breakfast Room

Two Reception Rooms

Good Size Established Rear Garden

Garage & Driveway

No Onward Chain





LOCATION: Tonbridge

Tonbridge is a thriving market town that has developed over the centuries. It boasts a fine example of a 'Motte and Bailey' Norman castle built in the 13th century, set on the banks of the river Medway with the castle grounds abutting Tonbridge Park offering covered/open air swimming pool, tennis courts, childrens' play areas, miniature railway, putting etc.

Tonbridge town offers an excellent range of retail and leisure activities with many High Street stores, together with a selection of coffee shops, restaurants and local inns.

The mainline station provides fast commuter links into London (Cannon Street/London Bridge/Charing Cross in approximately 40 minutes) with road links to the M20 & M25 motorways via the nearby A26 and A21.

Tonbridge offers first-rate primary and secondary schools (including Grammars and Public Schools) many of which consistently do well in the league tables. There are many places of historical interest in the surrounding areas including Penshurst Place and Gardens, Hever Castle, Knole House and Chartwell (once home to Winston Churchill).

ADDITIONAL INFORMATION:

Council Tax Band F

Double Glazed Windows

Energy Efficiency Rating			
Score	Energy rating	Current	Potential
92+	A		
81-91	B		
69-80	C		
55-68	D	62 D	72 C
39-54	E		
21-38	F		
1-20	G		

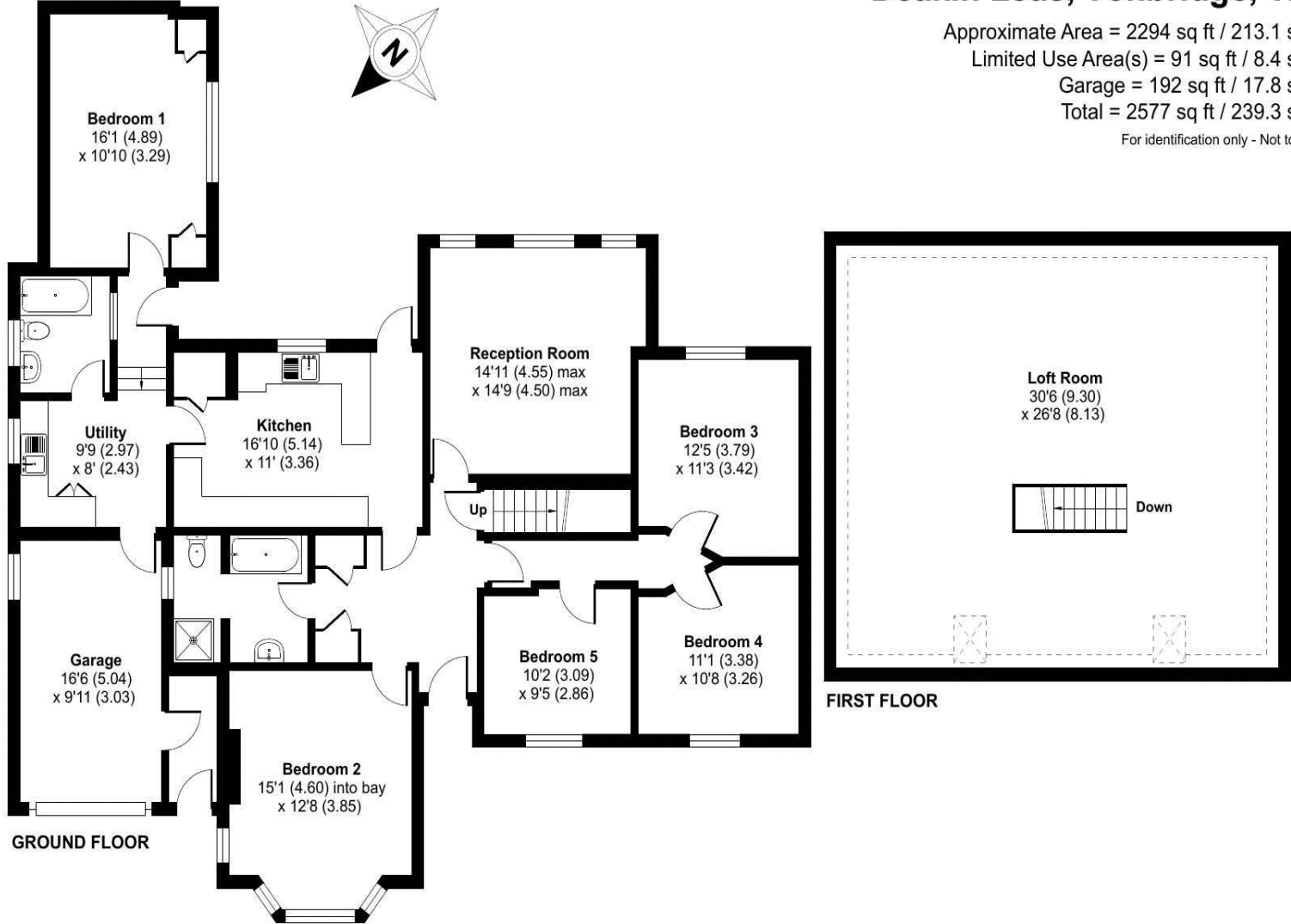


Important Notice: Bracketts, their clients and any joint agents give notice that they have no authority to make or give any representations or warranties in relation to the property. These particulars do not form part of any offer or contract and must not be relied upon as statements or representations of fact. The text, photographs and plans are for guidance only and are not necessarily comprehensive. All areas, measurements or distances are approximate and no responsibility is taken for any error, omission or mis-statement. It should not be assumed that the property has necessary planning, building regulation or other consents and Bracketts have not tested any services, appliances, equipment or facilities. Purchasers must satisfy themselves by inspection or otherwise. Prices, rents or any other charges are exclusive of VAT unless stated to the contrary.

Deakin Leas, Tonbridge, TN9

Approximate Area = 2294 sq ft / 213.1 sq m
 Limited Use Area(s) = 91 sq ft / 8.4 sq m
 Garage = 192 sq ft / 17.8 sq m
 Total = 2577 sq ft / 239.3 sq m

For identification only - Not to scale



Floor plan produced in accordance with RICS Property Measurement Standards incorporating International Property Measurement Standards (IPMS2 Residential). © nchecon 2024. Produced for Bracketts llp. REF: 1145699

132 High Street,
 Tonbridge, Kent TN9 1BB
 01732 350503
tonbridge@bracketts.co.uk

When experience counts... **bracketts** est. 1828