

RIVER BANK
HOUSE

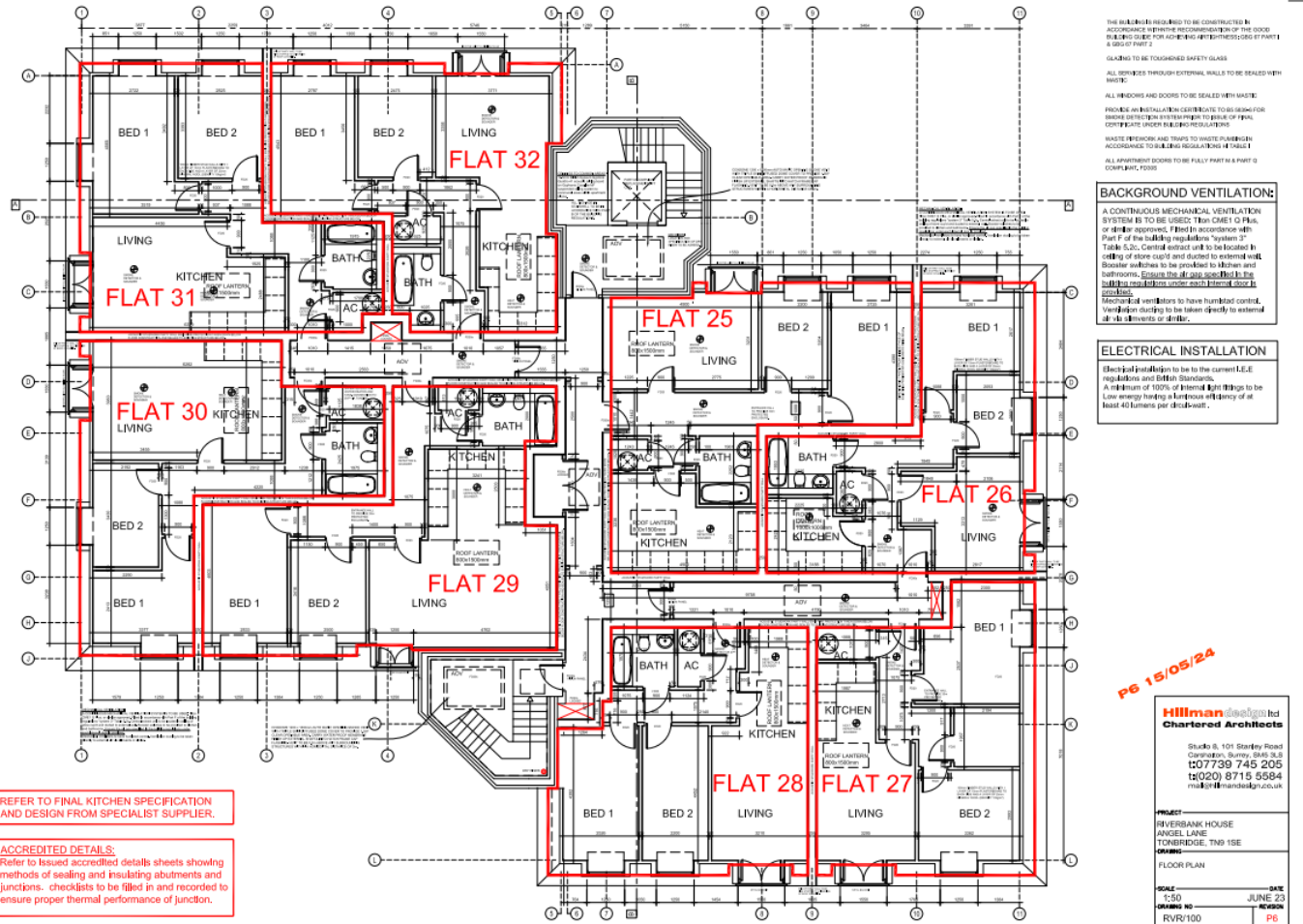


When experience counts...

est. 1828
bracketts



- Town Centre Development
- High Street Location
- 8 x 2 Bedroom apartments
- Lift Access to All Floors
- Spacious Open Plan Living Accommodation
- Luxurious Kitchens & Bathrooms
- Security Communal Entrance
- Approx 32 minutes to London Bridge from Tonbridge Station & Hildenborough Station
- Juliet Balconies
- Secure Undercroft Parking
- Close to All Local Amenities
- 10yr Builder Guarantee Insurance



LOCATION: Tonbridge, Kent

Tonbridge is a thriving market town that has developed over the centuries. It boasts a fine example of a 'Motte and Bailey' Norman castle built in the 13th century, set on the banks of the river Medway with the castle grounds abutting Tonbridge Park offering covered/open air swimming pool, tennis courts, childrens' play areas, miniature railway, putting etc.

Tonbridge town offers an excellent range of retail and leisure activities with many High Street stores and a full complement of banks and building societies, together with a selection of coffee shops, restaurants and local inns.

The mainline station provides links into London (Cannon Street/London Bridge/Charing Cross in approximately 40 minutes) with road links to the M20 & M25 motorways via the nearby A26 and A21.

Tonbridge offers first-rate primary and secondary schools (including Grammars and Public Schools) many of which consistently do well in the league tables. There are many places of historical interest in the surrounding areas including Penshurst Place and Gardens, Hever Castle, Knole House and Chartwell (once home to Winston Churchill).



Riverbank House Specification schedule



Kitchens

Bespoke kitchens with contemporary cabinets, quartz work surface, integrated ovens, fridge freezer, dishwasher & washing machine



Interior Designed Bathrooms

Modern shower rooms featuring white sanitary ware with designer fittings, vanity unit, double shower cubicle, heated towel rails, light mirrors with Bluetooth connection

Heating, Electrical & Lighting

Electric heating system. Recessed spotlights and feature lighting throughout.
Primary BT points and pre-wired Multi-Media points

Interior Finishes

Quality oak wood flooring, fully tiled shower rooms

External Features

Each apartment comes with a secured undercroft parking space accessed via electric roller door. Lift access to all floors, communal hallway area. External lighting.

General Features

Private Development in town centre location

Management company set up to maintain all communal areas.

125yr Brand new lease for each apartment.



Riverbank House, Angel Lane, Tonbridge, Kent, TN9 1GF

When experience counts...

est. 1828
bracketts



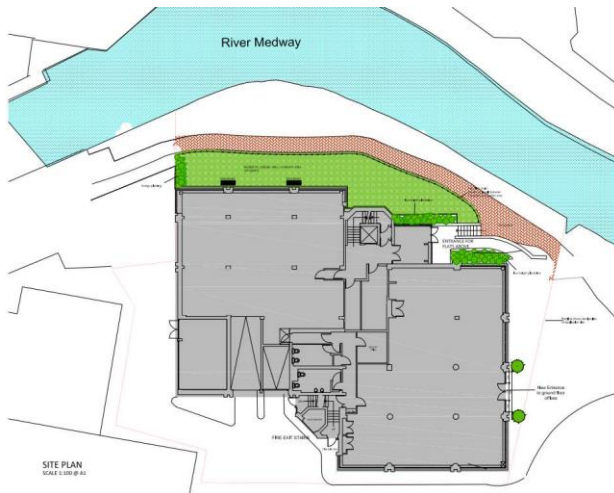
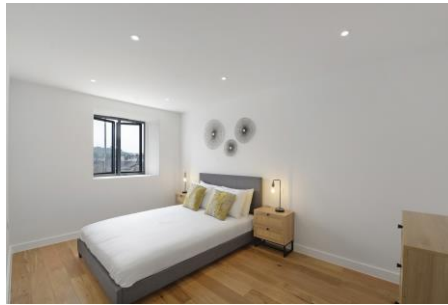


Riverbank House, Angel Lane, Tonbridge, Kent, TN9 1GF

When experience counts...

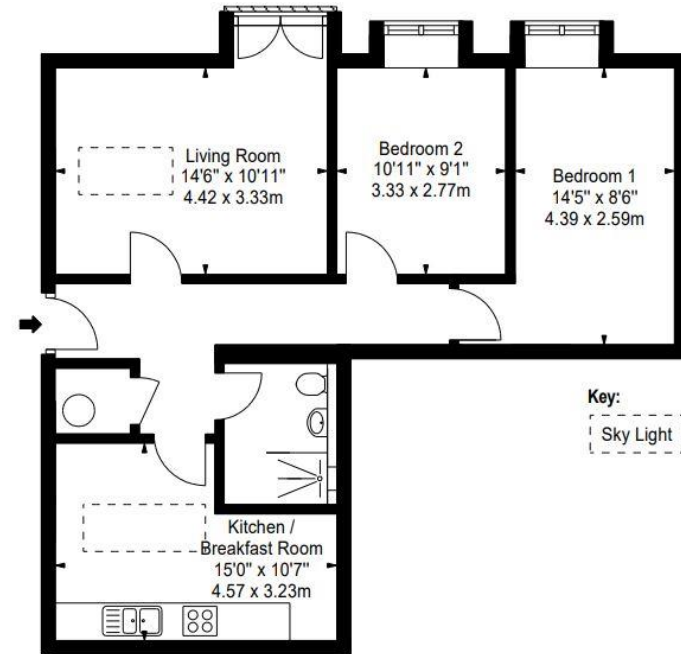
est. 1828
bracketts

Apartment 25, Riverbank House, Angel



Plot 1
Riverbank House
TONBRIDGE
TN9 1GF

Approx. Gross Internal Area*
726 ft² - 67.45 m²

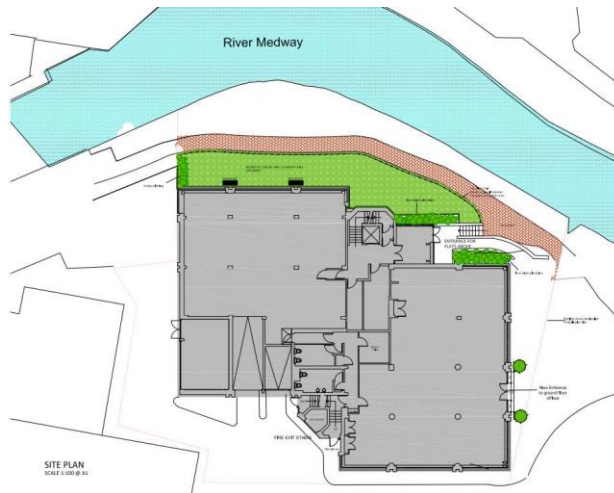
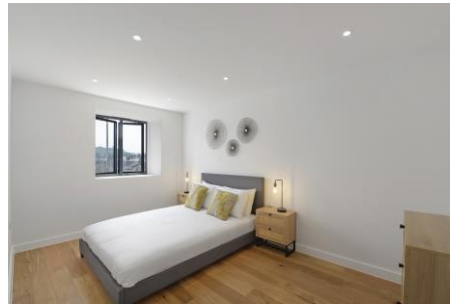


Third Floor

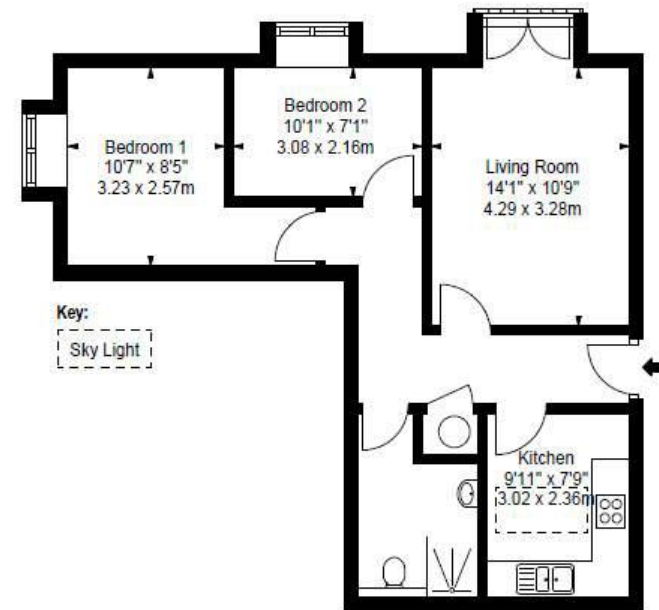
Illustration For Identification Purposes Only. Not to Scale

* As Defined by RICS - Code of Measuring Practice
Copyright © Blueprint Floorplans Ltd. 2024
info@blueprintfloorplans.co.uk
Drawing No. FP001

Apartment 26, Riverbank House, Angel



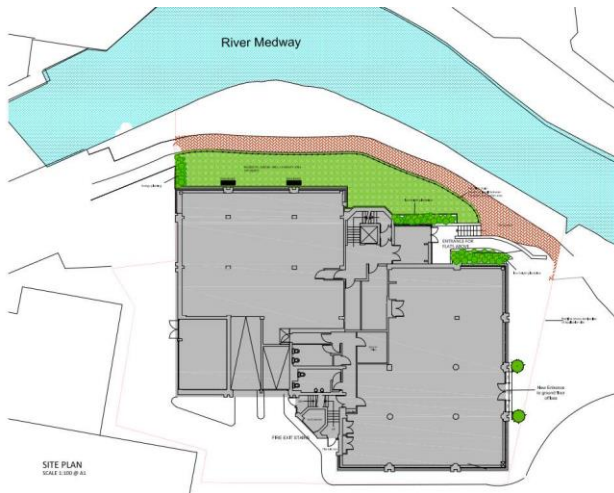
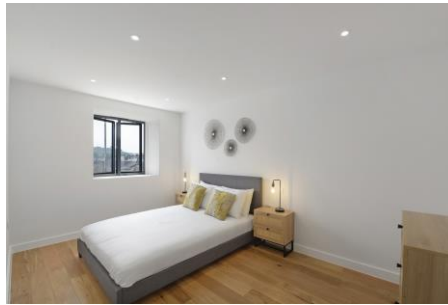
Plot 2
Riverbank House
TONBRIDGE
TN9 1GF
Approx. Gross Internal Area*
600 ft² - 55.74 m²



Third Floor

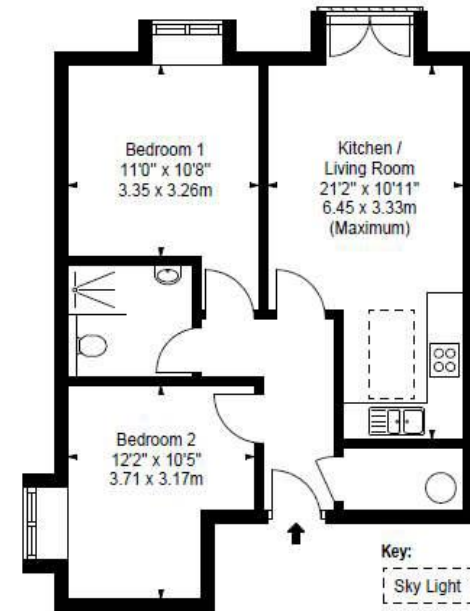
Illustration For Identification Purposes Only. Not to Scale
* As Defined by RICS - Code of Measuring Practice
Copyright © BluePrint Floorplans Ltd. 2024
info@blueprintfloorplans.co.uk
Drawing No. FP001

Apartment 27, Riverbank House, Angel



Plot 3
Riverbank House
TONBRIDGE
TN9 1GF

Approx. Gross Internal Area*
605 ft² - 56.21 m²

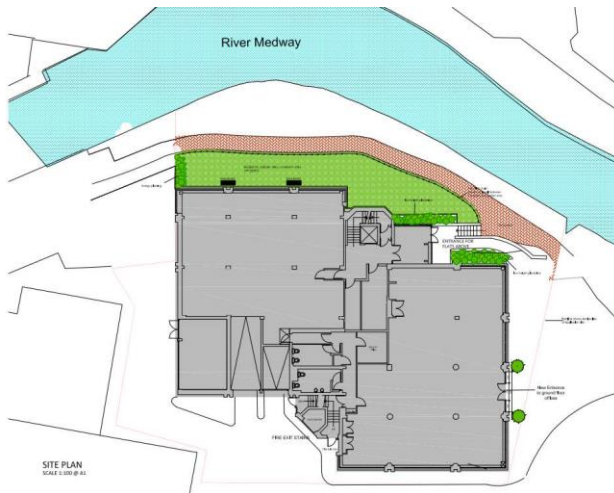
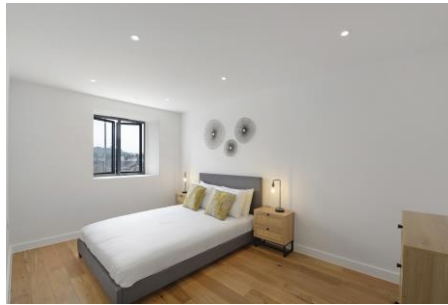


Third Floor

Illustration For Identification Purposes Only. Not to Scale

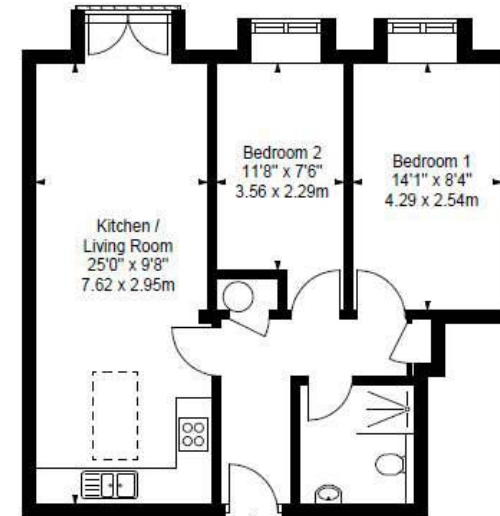
* As Defined by RICS - Code of Measuring Practice
Copyright © Blueprint Floorplans Ltd, 2024
info@blueprintfloorplans.co.uk
Drawing No. FP001

Apartment 28, Riverbank House, Angel

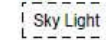


Plot 4
Riverbank House
TONBRIDGE
TN9 1GF

Approx. Gross Internal Area*
622 ft² - 57.79 m²



Key:

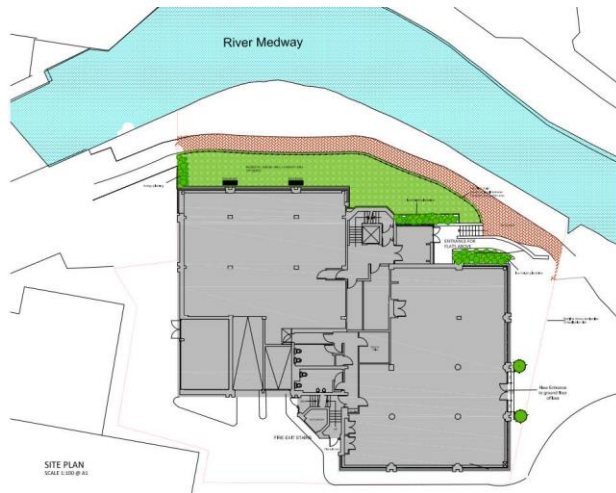
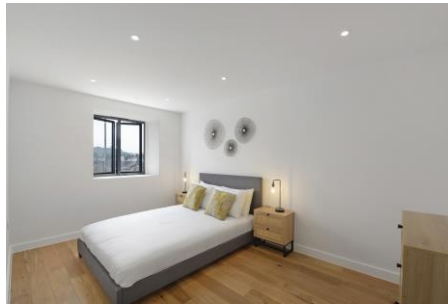


Third Floor

Illustration For Identification Purposes Only, Not to Scale

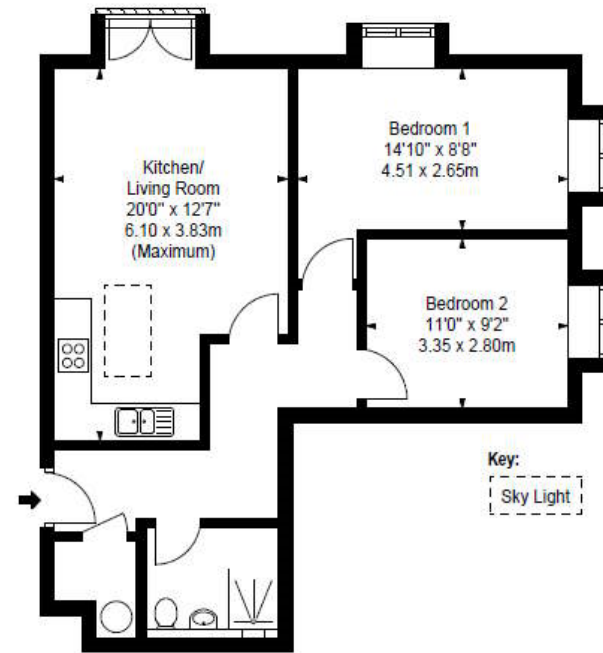
* As Defined by RICS - Code of Measuring Practice
Copyright © Blueprint Floorplans Ltd. 2024
info@blueprintfloorplans.co.uk
Drawing No. FP001

Apartment 31, Riverbank House, Angel



Plot 5
Riverbank House
TONBRIDGE
TN9 1GF

Approx. Gross Internal Area *
676 ft² - 62.80 m²



Third Floor

Illustration For Identification Purposes Only. Not to Scale

* As Defined by RICS - Code of Measuring Practice
Copyright © Blueprint Floorplans Ltd. 2024
Info@blueprintfloorplans.co.uk
Drawing No. FP001

Apartment 30, Riverbank House, Angel

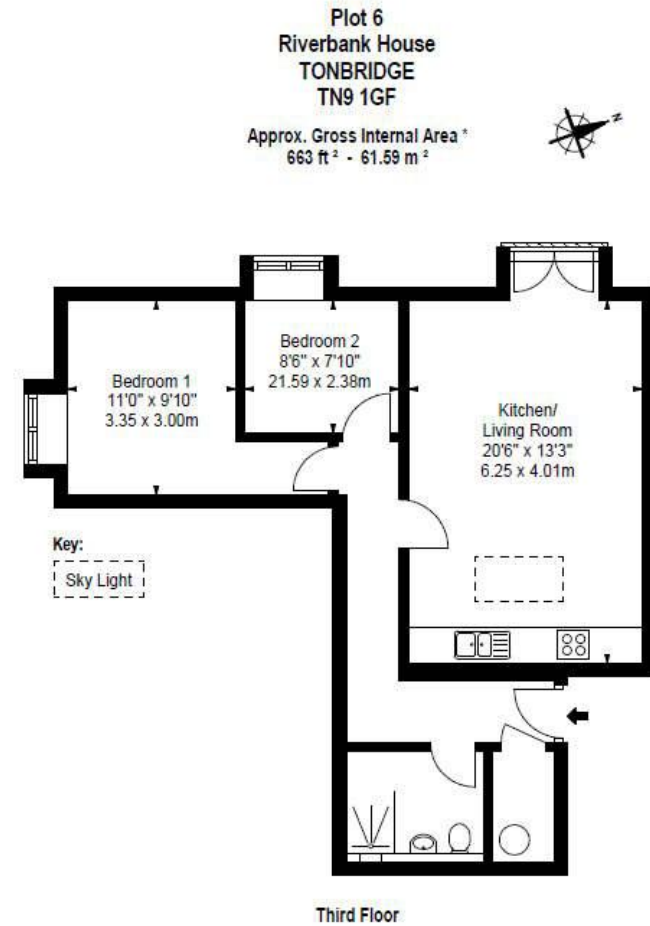
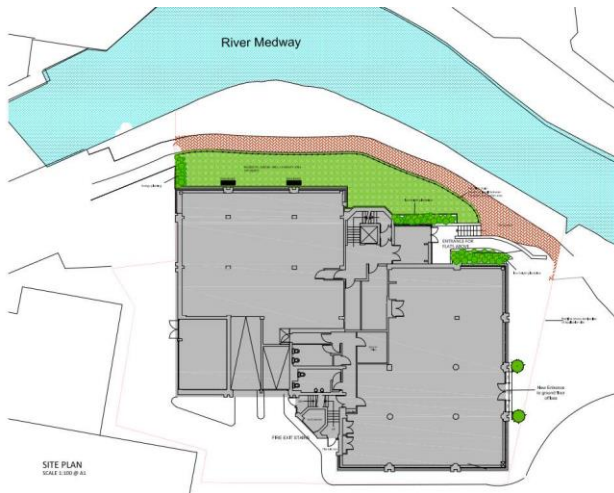
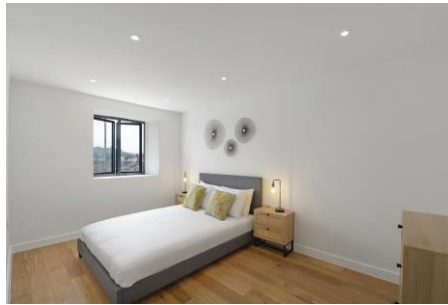
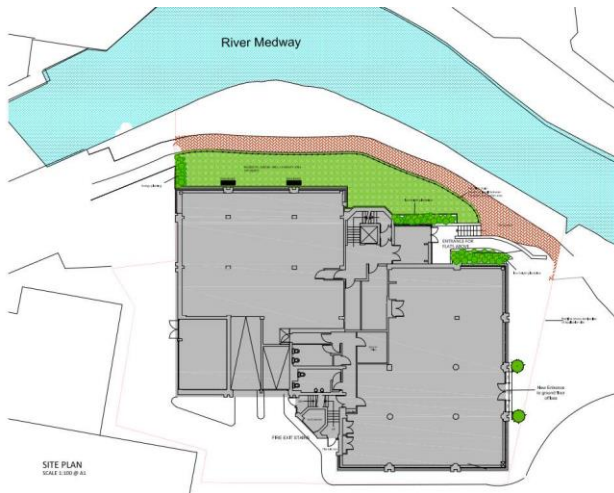
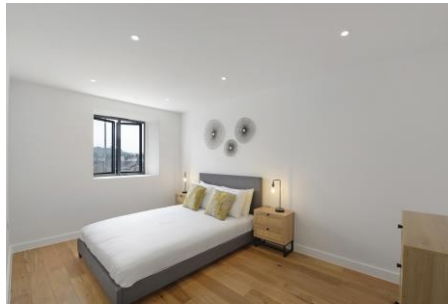


Illustration For Identification Purposes Only. Not to Scale

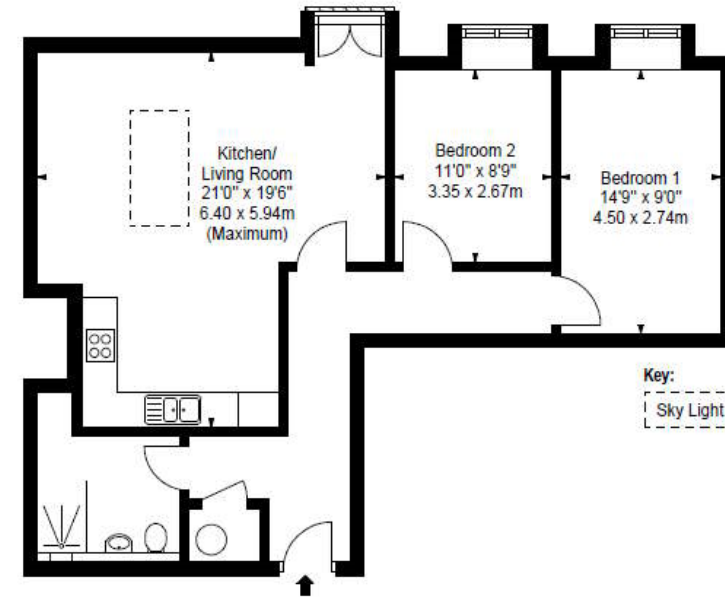
* As Defined by RICS - Code of Measuring Practice
Copyright © Blueprint Floorplans Ltd. 2024
Info@blueprintfloorplans.co.uk
Drawing No. FP001

Apartment 29, Riverbank House, Angel



Plot 7
Riverbank House
TONBRIDGE
TN9 1GF

Approx. Gross Internal Area*
794 ft² - 73.76 m²

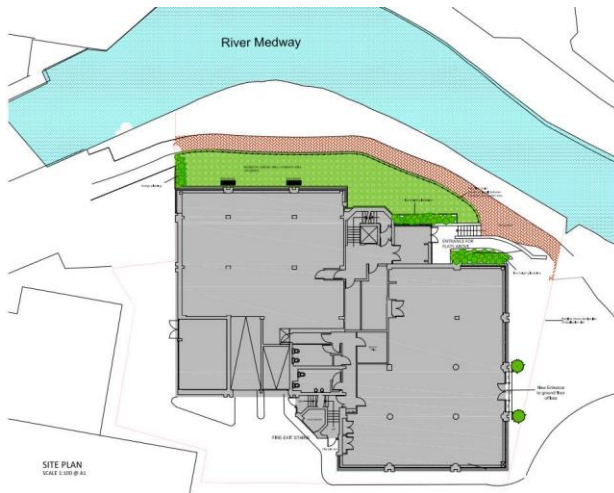
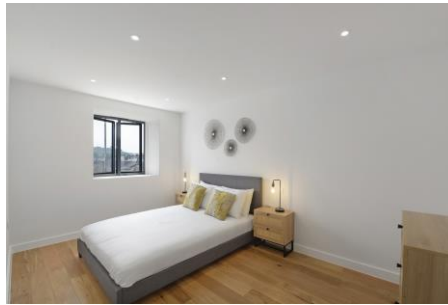


Third Floor

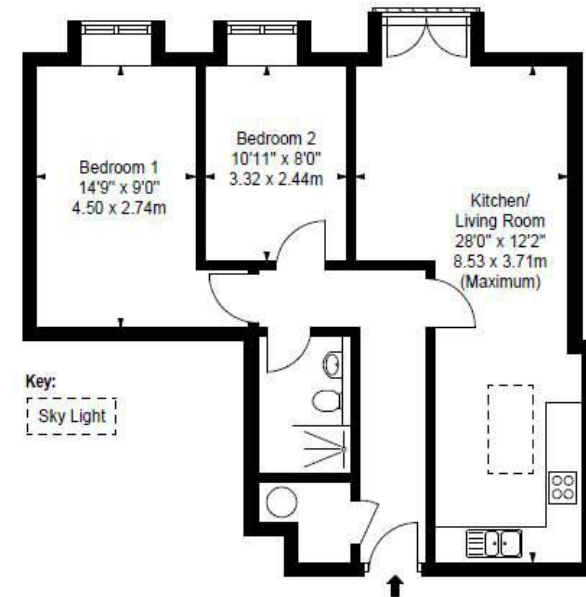
Illustration For Identification Purposes Only. Not to Scale

* As Defined by RICS - Code of Measuring Practice
Copyright © Blueprint Floorplans Ltd. 2024
info@blueprintfloorplans.co.uk
Drawing No. FP001

Apartment 32, Riverbank House, Angel



Plot 8
Riverbank House
TONBRIDGE
TN9 1GF
Approx. Gross Internal Area*
692 ft² - 64.29 m²



Third Floor

Illustration For Identification Purposes Only. Not to Scale

* As Defined by RICS - Code of Measuring Practice
Copyright © BluePrint Floorplans Ltd. 2024
Info@blueprintfloorplans.co.uk
Drawing No. FP001

Important Notice: Bracketts, their clients and any joint agents give notice that they have no authority to make or give any representations or warranties in relation to the property. These particulars do not form part of any offer or contract and must not be relied upon as statements or representations of fact. The text, photographs and plans are for guidance only and are not necessarily comprehensive. All areas, measurements or distances are approximate and no responsibility is taken for any error, omission or mis-statement. It should not be assumed that the property has necessary planning, building regulation or other consents and Bracketts have not tested any services, appliances, equipment or facilities. Purchasers must satisfy themselves by inspection or otherwise. Prices, rents or any other charges are exclusive of VAT unless stated to the contrary.