



Orchard Drive, Tonbridge, Kent, TN10 4LU

Guide Price £700,000 - £725,000

When experience counts...

est. 1828  
**bracketts**

We are pleased to offer for sale this Individually designed detached family home. Forming part of a private driveway in a tucked away position off orchard Drive. The property offers flexible living accommodation throughout. Internally comprising entrance hall, sitting room, play room, study/bedroom, dining room, fitted kitchen, good size utility room, separate bathroom and WC. To the first floor there is a separate WC, four bedrooms with one boasting an en suite bathroom. Externally the property offers a good size rear garden, driveway and garage. offered with no onward chain we recommend viewing at your earliest convenience.

4/5 Bedrooms

Detached Family House, Private Driveway

3/4 Reception Rooms

Flexible Living Arrangements

Kitchen & Large Utility Room

Master Bedroom With En-Suite Bathroom

Ground Floor Bathroom and Separate Cloakroom

Driveway Parking & Garage

Large Rear Garden

NO ONWARD CHAIN





**LOCATION: Tonbridge**

Tonbridge is a thriving market town that has developed over the centuries. It boasts a fine example of a 'Motte and Bailey' Norman castle built in the 13th century, set on the banks of the river Medway with the castle grounds abutting Tonbridge Park offering covered/open air swimming pool, tennis courts, childrens' play areas, miniature railway, putting etc.

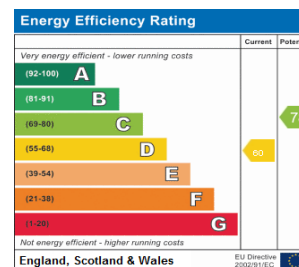
Tonbridge town offers an excellent range of retail and leisure activities with many High Street stores and a full complement of banks and building societies, together with a selection of coffee shops, restaurants and local inns.

The mainline station provides fast commuter links into London (Cannon Street/London Bridge/Charing Cross in approximately 40 minutes) with road links to the M20 & M25 motorways via the nearby A26 and A21.

Tonbridge offers first-rate primary and secondary schools (including Grammars and Public Schools) many of which consistently do well in the league tables. There are many places of historical interest in the surrounding areas including Penshurst Place and Gardens, Hever Castle, Knole House and Chartwell (once home to Winston Churchill).

**ADDITIONAL INFORMATION:**

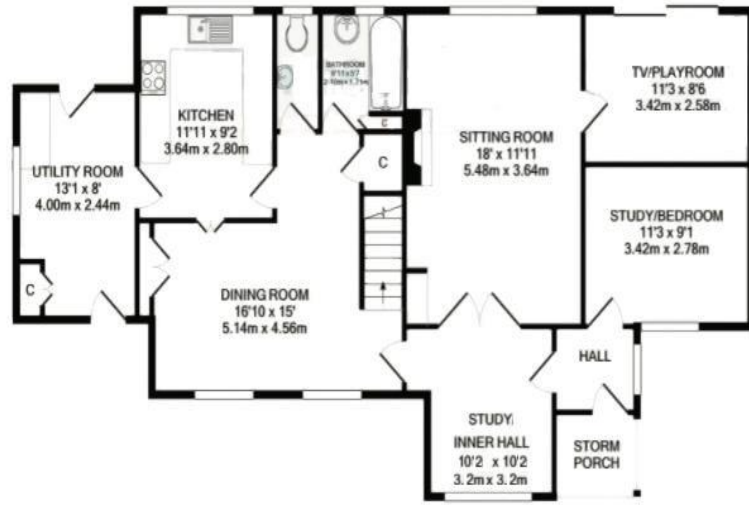
Council Tax Band E  
Double Glazed Windows



Important Notice: Bracketts, their clients and any joint agents give notice that they have no authority to make or give any representations or warranties in relation to the property. These particulars do not form part of any offer or contract and must not be relied upon as statements or representations of fact. The text, photographs and plans are for guidance only and are not necessarily comprehensive. All areas, measurements or distances are approximate and no responsibility is taken for any error, omission or mis-statement. It should not be assumed that the property has necessary planning, building regulation or other consents and Bracketts have not tested any services, appliances, equipment or facilities. Purchasers must satisfy themselves by inspection or otherwise. Prices, rents or any other charges are exclusive of VAT unless stated to the contrary.



1ST FLOOR  
APPROX. FLOOR  
AREA 661 SQ.FT.  
(61.4 SQ.M.)



GROUND FLOOR  
APPROX. FLOOR  
AREA 1050 SQ.FT.  
(97.5 SQ.M.)

ORCHARD DRIVE TONBRIDGE  
TOTAL APPROX. FLOOR AREA 1855 SQ.FT. (172.3 SQ.M.)

Whilst every attempt has been made to ensure the accuracy of the floor plan contained here, measurements of doors, windows, rooms and any other items are approximate and no responsibility is taken for any error, omission, or mis-statement. This plan is for illustrative purposes only and should be used as such by any prospective purchaser. The services, systems and appliances shown have not been tested and no guarantee as to their operability or efficiency can be given.

Made with Metropix 02/021