



Flat 16, Chancellor House Mount Ephraim, Tunbridge Wells – TN4
8BT

Tunbridge Wells

Guide Price

£370,000

est. 1828
bracketts



Flat 16

Chancellor House Mount Ephraim,
Tunbridge Wells

A spacious, substantial and well-presented ground floor apartment with triple aspect, situated in this 1930's mansion block, set well back and concealed from the road. The building has a resident day manager (7 days a week 0800 – 2200hrs), CCTV and beautiful grounds of approx. 5 acres that envelop the building. Within the apartment there is a large hallway, double aspect sitting room, dining room, and fitted kitchen, a family bathroom and two double bedrooms. The property will be sold with a share of the freehold, use of the communal grounds and parking, (NB: pets are allowed with consent). We recommend an early viewing.
Council Tax band: D

Tenure: Leasehold

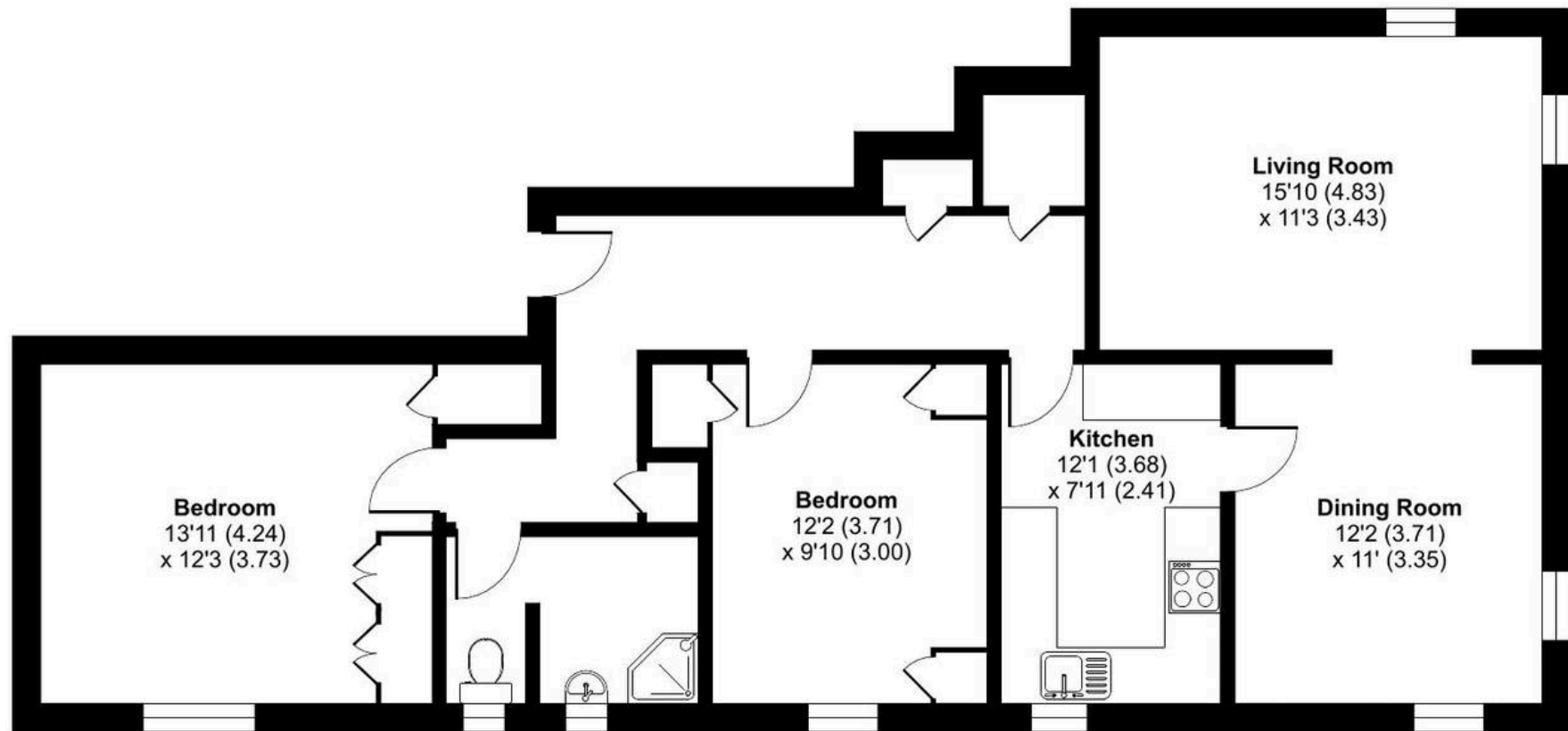




Chancellor House, Mount Ephraim, Tunbridge Wells, TN4

Approximate Area = 967 sq ft / 89.8 sq m

For identification only - Not to scale



GROUND FLOOR



Floor plan produced in accordance with RICS Property Measurement 2nd Edition, Incorporating International Property Measurement Standards (IPMS2 Residential). © nichecom 2025. Produced for Bracketts llp. REF: 1330947