



**DERBYSHIRE'S**  
— *Estate Agents* —

Badger Cottage Newtown, Langport, Somerset,  
TA10 9SE



A Spacious Three Double Bedroom Semi-Detached Home in the Heart of Langport, Somerset

Located in the popular market town of Langport, this generously proportioned three double bedroom semi-detached house offers excellent living space, ample parking, and fantastic potential for personalisation.

The property welcomes you with an entrance porch leading into a bright, dual-aspect lounge featuring a chimney breast and hearth—perfect as a cosy focal point. Double doors open into a well-sized kitchen, which flows seamlessly into the open-plan family room/dining area, creating an ideal space for modern living and entertaining. A convenient ground-floor WC completes the downstairs accommodation.

To the first floor are three comfortable double bedrooms along with a family bathroom equipped with a bath, WC, basin and separate shower cubicle.

Externally, the property benefits from off-road parking spaces and an enclosed rear garden. A brick-built outbuilding offers additional storage or workshop potential, though it would benefit from repair.



- Three Double Bedrooms
- Large Kitchen/Dining/Family Room
- 3+ Off Road Parking Spaces
  - Enclosed rear garden
- Market Town Location
  - Chain Free

Energy Efficiency Rating		Environmental Impact (CO <sub>2</sub> ) Rating	
	Current	Potential	
Very energy efficient - lower running costs			
(92 plus) A			
(81-91) B			
(69-80) C			
(55-68) D			
(39-54) E			
(21-38) F			
(1-20) G			
Not energy efficient - higher running costs			
England & Wales	EU Directive 2002/91/EC		
Very environmentally friendly - lower CO <sub>2</sub> emissions			
(92 plus) A			
(81-91) B			
(69-80) C			
(55-68) D			
(39-54) E			
(21-38) F			
(1-20) G			
Not environmentally friendly - higher CO <sub>2</sub> emissions			
England & Wales	EU Directive 2002/91/EC		

Badger Cottage Newtown, Langport, Somerset, TA10 9SE  
£350,000

## **A SPACIOUS THREE DOUBLE BEDROOM SEMI-DETACHED HOME**

A Spacious Three Double Bedroom  
Semi-Detached Home in the Heart of  
Langport, Somerset

Located in the popular market town of  
Langport, this generously proportioned  
three double bedroom semi-detached  
house offers excellent living space,  
ample parking, and fantastic potential  
for personalisation.

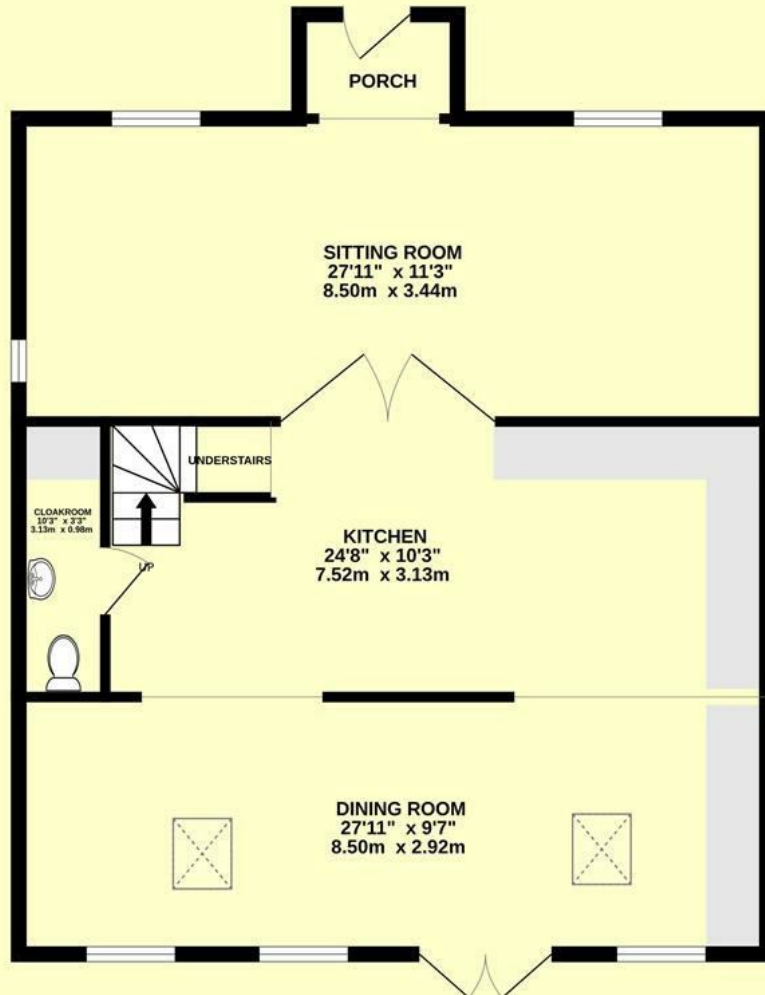
The property welcomes you with an  
entrance porch leading into a bright,  
dual-aspect lounge featuring a chimney  
breast and hearth—perfect as a cosy  
focal point. Double doors open into a  
well-sized kitchen, which flows  
seamlessly into the open-plan family  
room/dining area, creating an ideal  
space for modern living and  
entertaining. A convenient ground-floor

WC completes the downstairs  
accommodation.

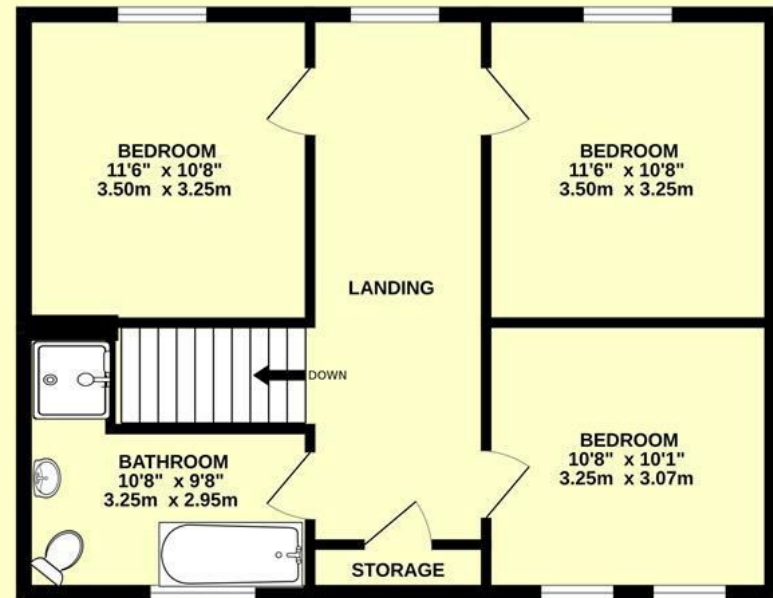
To the first floor are three comfortable  
double bedrooms along with a family  
bathroom equipped with a bath, WC,  
basin and separate shower cubicle.

Externally, the property benefits from  
off-road parking spaces and an enclosed  
rear garden. A brick-built outbuilding  
offers additional storage or workshop  
potential, though it would benefit from  
repair. While the house requires some  
minor redecoration, it presents a superb  
opportunity to create a wonderful  
family home in a sought-after Somerset  
location

GROUND FLOOR  
891 sq.ft. (82.8 sq.m.) approx.



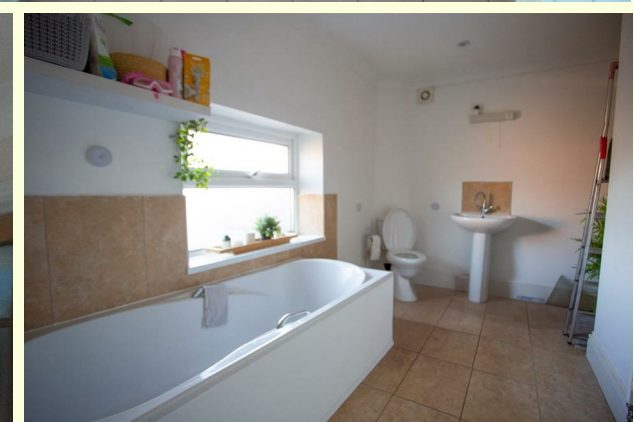
1ST FLOOR  
600 sq.ft. (55.7 sq.m.) approx.



TOTAL FLOOR AREA : 1490 sq.ft. (138.5 sq.m.) approx.

Whilst every attempt has been made to ensure the accuracy of the floorplan contained here, measurements of doors, windows, rooms and any other items are approximate and no responsibility is taken for any error, omission or mis-statement. This plan is for illustrative purposes only and should be used as such by any prospective purchaser. The services, systems and appliances shown have not been tested and no guarantee as to their operability or efficiency can be given.  
Made with Metropix ©2025





Directions -







**DERBYSHIRE'S**  
— *Estate Agents* —

11, High Street, Chard, Somerset, TA20 1QF  
[www.derbyshires.net](http://www.derbyshires.net) 01460 63600