



DERBYSHIRE'S
— *Village and Country* —

5 Orchard Rise, Chard, TA20 1FX

Beautifully Presented 4-Bedroom Detached Home located in a highly sought after cul-de-sac with far reaching views, Extensive Gardens and Additional Plot.

This modern and immaculately presented four-bedroom detached home offers light and spacious accommodation throughout, set within extensive wrap-around gardens and benefitting from an additional garden plot to the side.

The property features a welcoming entrance hall, a convenient cloakroom, a generous lounge with French doors opening onto the garden, and a stylish open-plan kitchen/dining room perfect for entertaining. A separate utility room completes the ground floor.

Upstairs, the landing leads to four well-proportioned bedrooms and a contemporary family bathroom.

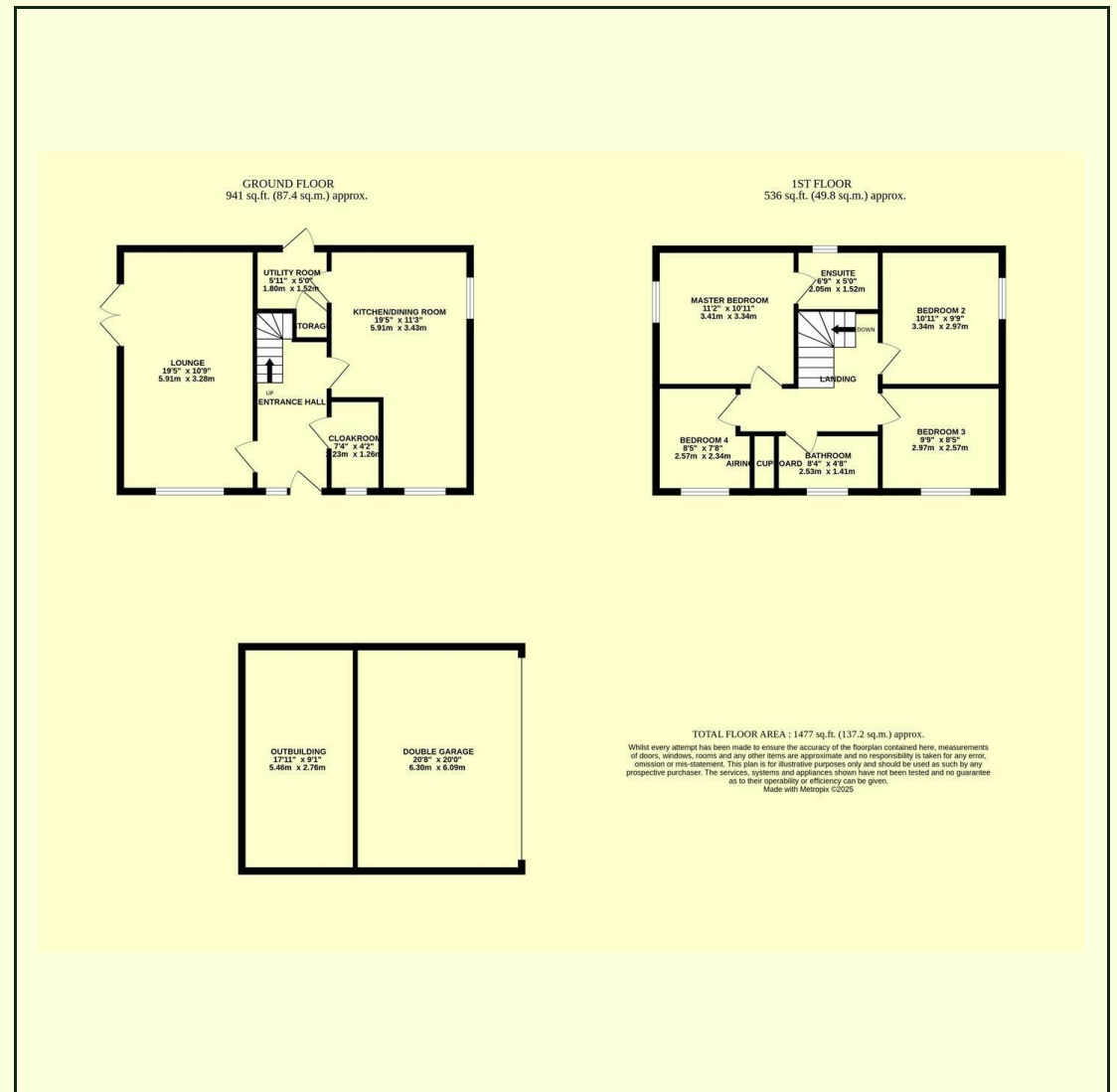
Externally, the home boasts a double detached garage with electric double door, eve storage, and a dedicated workshop —ideal for hobbyists or additional storage needs. The mature gardens offer a peaceful and private setting, ideal for outdoor living.

Located in a desirable area, this home is perfect for families seeking space, comfort, and potential for future expansion.

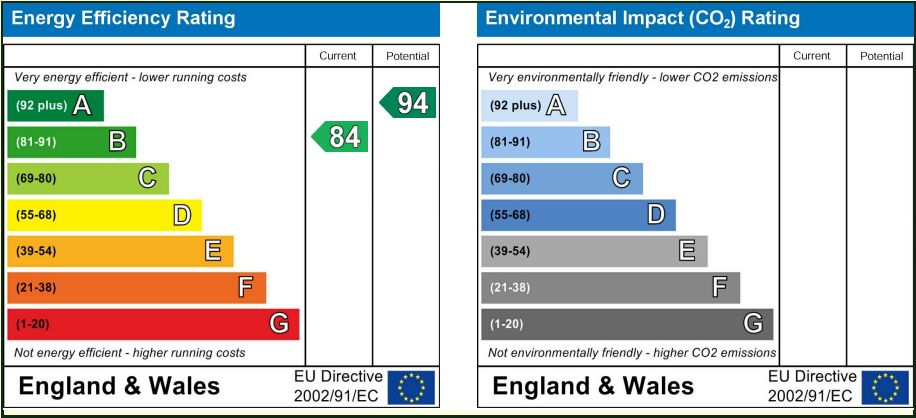
Orchard Rise is a much favoured area located on the Western fringe of Chard but within walking distance of both open countryside and the town centre. Chard is well served with a wide range of amenities including a choice of major supermarkets, smaller retailers, banks, educational and new leisure facilities. The County town of Taunton is some 14 miles to the North with access to the M5 motorway and proximity rail service (London Paddington).

Detached 4 Bedroom House on a larger than average plot

- Double Garage with electric door
- Workshop/Storage
- Wrap around mature gardens
- Spectacular Views
- Spacious Kitchen Dining Room
- Utility Room
- En-Suite to Master
- Additional garden plot to the side
- Driveway for several cars



5 Orchard Rise, Chard, TA20 1FX
£525,000





DERBYSHIRE'S
— *Village and Country* —

11, High Street, Chard, Somerset, TA20 1QF
www.derbyshires.net 01460 63600