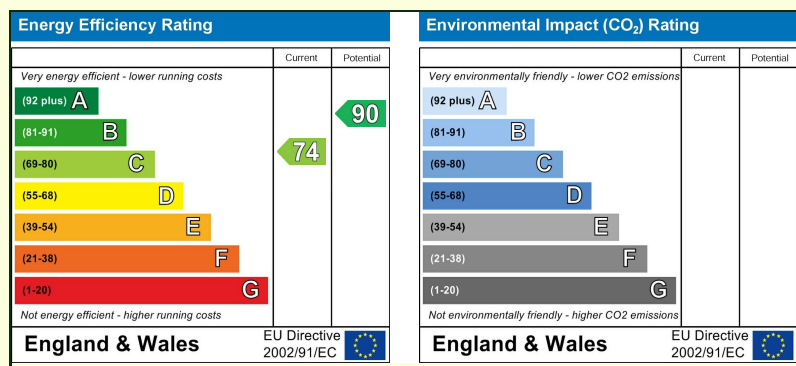




DERBYSHIRE'S
— *Estate Agents* —

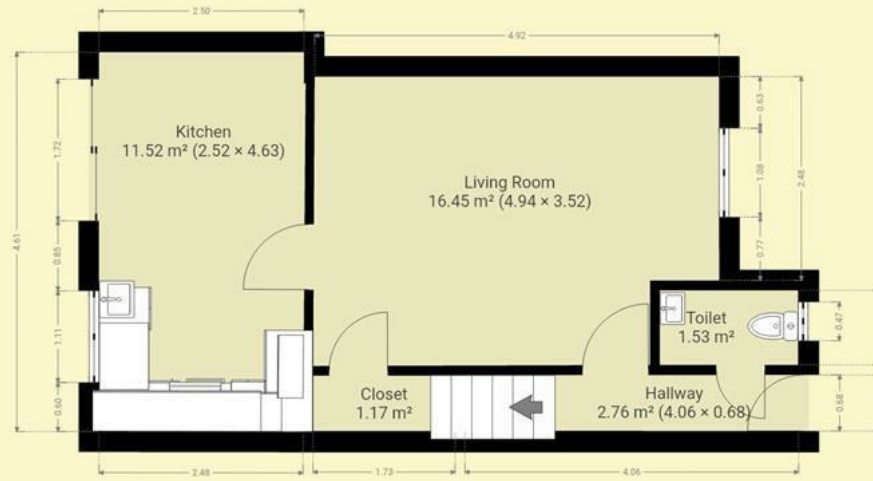
76 Brutton Way, Chard, TA20 2HB

In need of some minor cosmetic work this well proportioned three bedroom family home is offered to the market with NO ONWARD CHAIN. Situated in a popular and established development close to the town centre the property briefly comprises a bright lounge, fully fitted kitchen diner and separate WC to the ground floor with family bathroom, two double bedrooms and a further single bedroom to the first floor. Viewing is highly recommended on this fabulous home which is priced to sell.



- NO ONWARD CHAIN
- OFF STREET PARKING
- CLOSE TO TOWN CENTRE
- POPULAR & ESTABLISHED DEVELOPMENT
- THREE BEDROOMS
- GARDEN

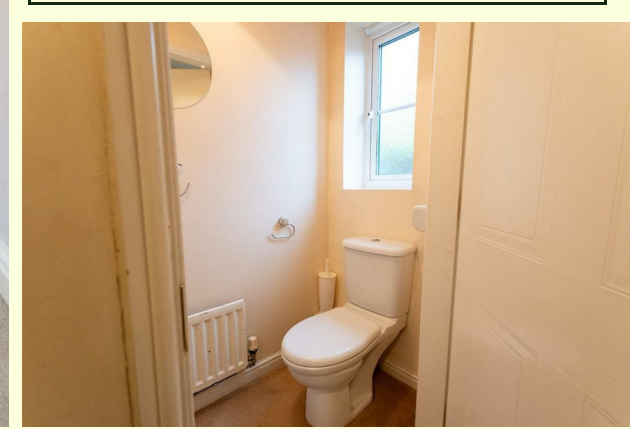
76 Brutton Way, Chard, TA20 2HB
£220,000



THIS FLOOR PLAN IS PROVIDED WITHOUT WARRANTY OF ANY KIND. SENSOPIA DISCLAIMS ANY WARRANTY INCLUDING, WITHOUT LIMITATION, SATISFACTORY QUALITY OR ACCURACY OF DIMENSIONS.



Directions -





DERBYSHIRE'S
— Estate Agents —

7, High Street, Chard, Somerset, TA20 1QF
www.derbyshires.net 01460 63600