

14 Malvern House, Nassau Street, Fitzrovia, London, W1W 7AB



Flat to Rent
2 Bedrooms
£634 pw

Contact:

Residential Lettings

020 7843 9180

Description

Two-bedroom flat to rent in Fitzrovia.

This apartment has two good size bedrooms, a separate living area to kitchen & retains original period features including sash windows, original staircases with wrought iron balusters and an oak handrail.

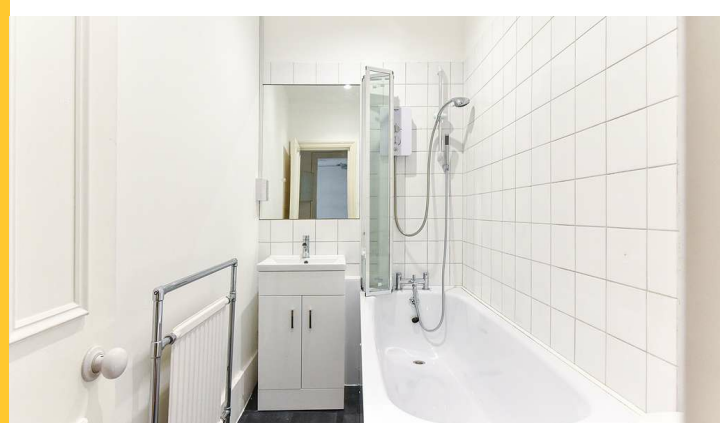
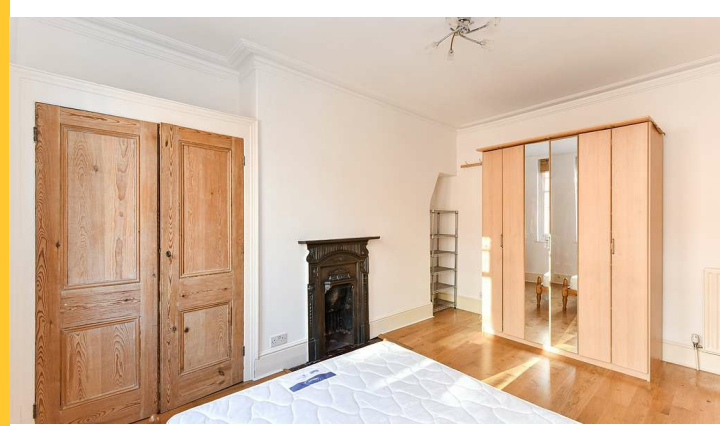
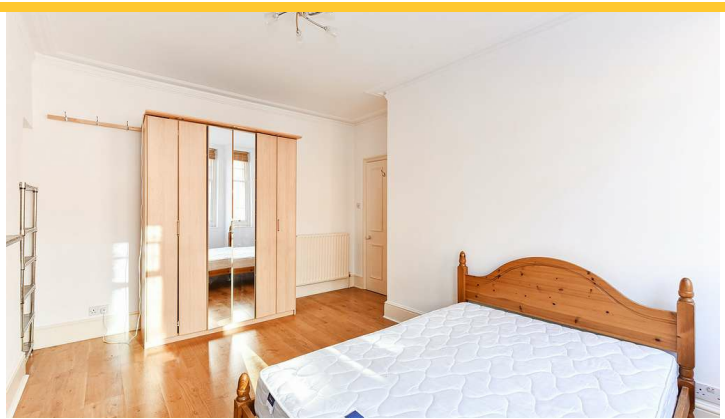
The property sits on the third floor of our period mixed-use building located on the corner of Riding House Street and Nassau Street directly opposite the landmark Fitzroy Place development.

Adjacent to Soho, Fitzrovia is one of London's trendiest areas having developed a

- Attractive Period Building
- Available Immediately
- Central Heating
- City Centre Location
- Common Parts Maintained To High Standard
- Entry Phone System
- Excellent Transport Links
- Hard Wood Flooring In Living Room
- Separate Bathroom
- Walking Distance From Tube Station
- Wooden Floors

Your Notes

14 Malvern House, Nassau Street, Fitzrovia, London, W1W 7AB



prestigious and longstanding association with the capital's TMT, fashion, film and music industries.

Public transport links are excellent with Oxford Circus (Victoria, Central and Bakerloo lines) and Tottenham Court Road (Northern and Central lines) stations in very close proximity.

There are no bills Included in the rent & there is no allocated parking included with this property. However, residents can apply for on street residents parking through the council. Additional costs will apply.