

42A New Compton Street, Covent Garden, London, WC2H 8DA

Flat to Rent
1 Bedroom
£495 pw

Contact:

Residential Lettings

020 7843 9180



Description

One bedroom flat to rent in Covent Garden.

This spacious one bedroom split-level flat covers the first and second floors of this period building.

The apartment consists of a bright & spacious reception room, a double sized bedroom and a fitted kitchen and bathroom / wc.

The property is situated in the vibrant and popular Covent Garden in the heart theatre land with many restaurants , bars & gyms close by.

- City Centre Location
- Entry Phone System
- Gas Central Heating
- Walking Distance From Tube Station

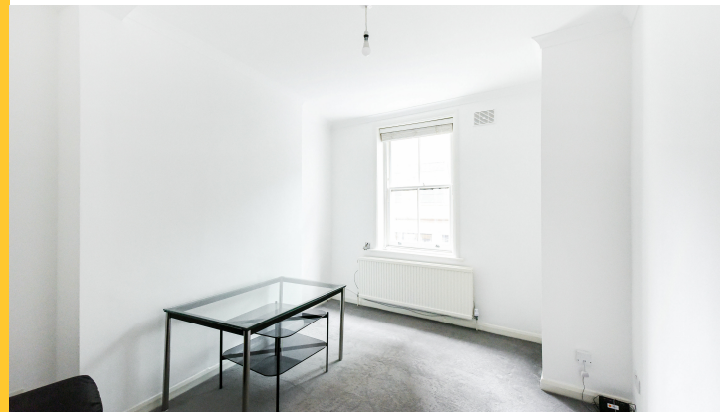
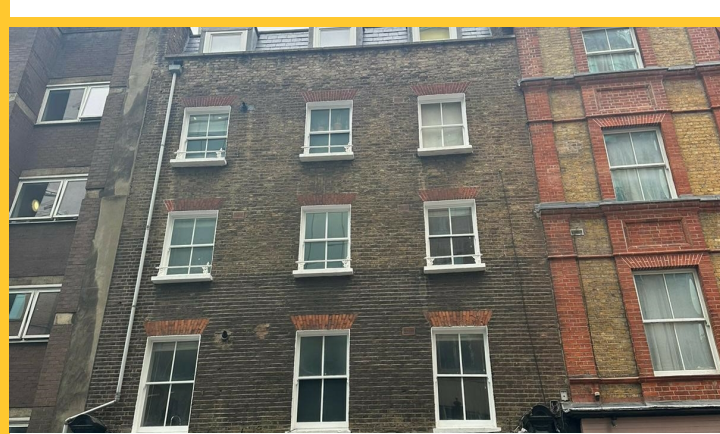
Your Notes

Pearl & Coutts

020 7843 9180

TO LET

42A New Compton Street, Covent Garden, London, WC2H 8DA



Covent Garden (Piccadilly Line) and Tottenham Court Road (Northern, Central & Elizabeth Lines) Zone 1 Underground Stations are within a short walking distance.

Please note that there is no allocated parking included with this property. However, residents can apply for on street residents parking through the council.

Additional costs will apply. There are no bills included with the rent.

AVAILABLE 11th June 2025