

Lockgate Road, SW6

£876 Per week

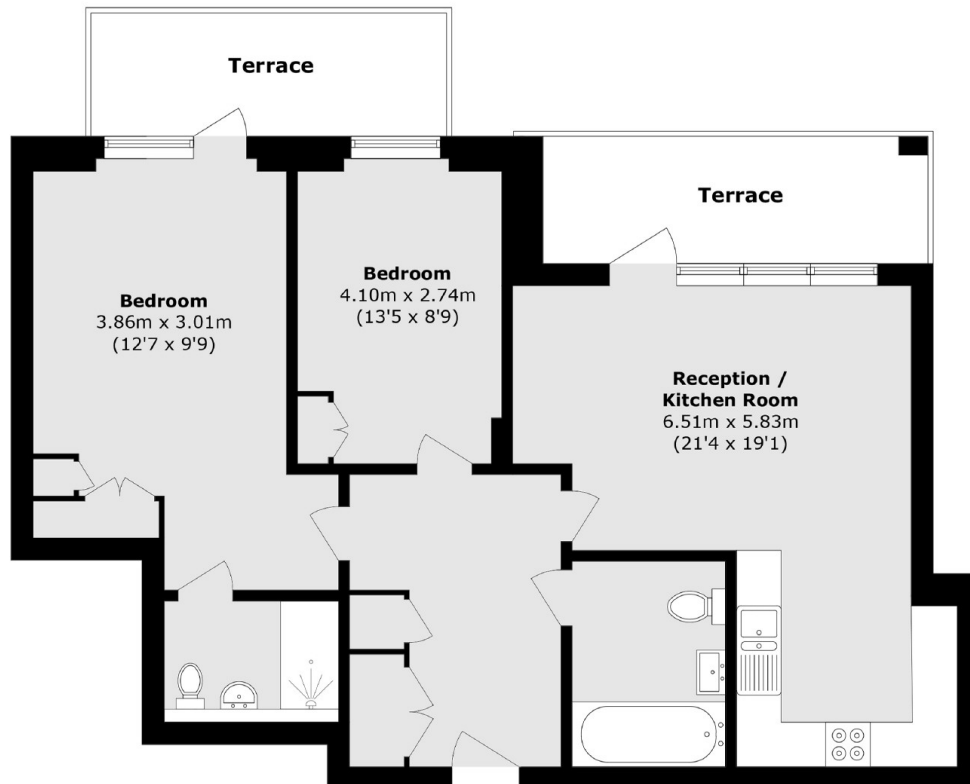
A stunning two double bedroom, two bathroom flat with a private terrace located within the secure King's Road Park development.

Ideally located for the local amenities of Imperial Wharf while there is a wide range of shops, bars and boutiques available on New King's Road.

Features

- Two Double Bedrooms
- Two Bathrooms
- Furnished
- Swimming Pool
- Private Balcony
- 24hr Concierge

Lockgate Road, London, SW6



Total area (approx.): 81.5 sq. m (877.3 sq. ft)
Terrace area (approx.): 16.7 sq. m (179.8 sq. ft)