

## Juniper Drive, SW18

£715 Per week

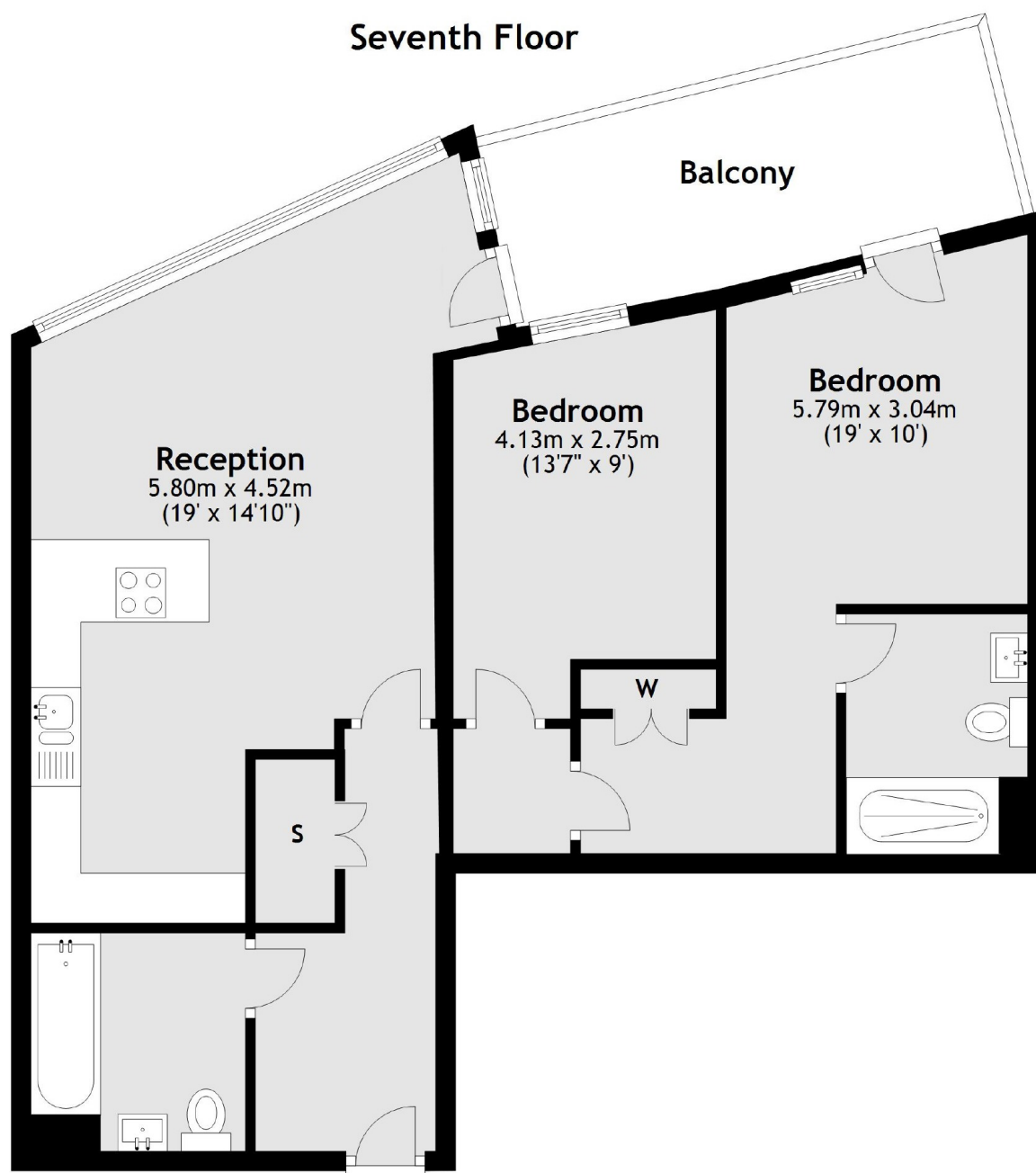
A modern two bedroom two bathroom apartment the popular Battersea Reach development, offering spacious contemporary living accommodation, tastefully interior designed to a high standard with a private balcony.

Battersea Reach development offers high end riverside accommodation with 24hr Concierge, gym, and an onsite Tesco express. The development is located within half a mile of Wandsworth Town station and within a mile of Clapham Junction station.

### Features

- Two Double Bedrooms
- Two Bathrooms
- Modern Kitchen
- Balcony
- Gym
- 24 Hr Concierge

# Juniper Drive, London, SW18



Total area: approx. 71.0 sq. metres (764.1 sq. feet)