



Bridgewater Avenue, SW6

£1,062 Per week

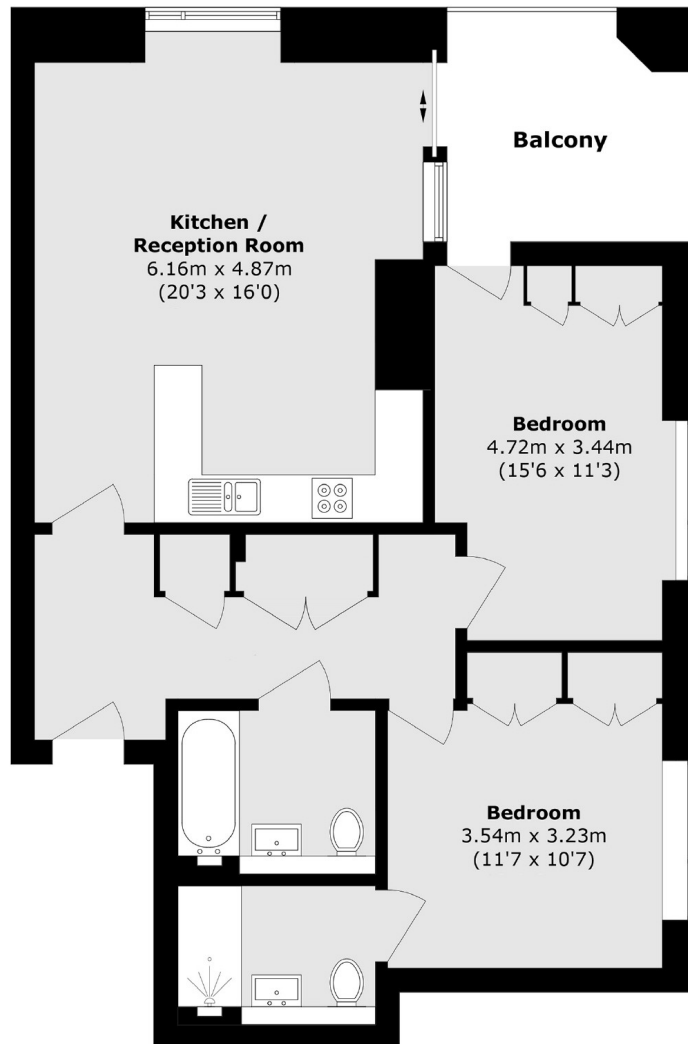
A new two double bedroom, two bathroom furnished apartment finished to a very high specification, located in the prestigious Chelsea Creek development.

Chelsea Creek is ideally located for the local amenities of Imperial Wharf while there is a wide range of shops, bars and boutiques available on King's Road.

Features

- Two Double Bedrooms
- Two Bathrooms
- Gym And Pool Access
- Private Balcony
- 24 Hour Concierge
- Imperial Wharf Station

Bridgewater Avenue,
London, SW6



Total area (approx.): 81.8 sq. m (880.5 sq. ft)
Balcony area (approx.): 11.5 sq. m (123.8 sq. ft)

Dexters

Chelsea Harbour
5 Design Centre East
London
SW10 0XF

020 7590 9515

Energy Rating: B. We aim to make our particulars both accurate and reliable. However they are not guaranteed; nor do they form part of an offer or contract. If you require clarification on any points then please contact us, especially if you're traveling some distance to view. Please note that appliances and heating systems have not been tested and therefore no warranties can be given as to their good working order.

 **RICS** | Regulated
Estate Agent
and Letting Agent

dexters.co.uk