



## Lensbury Avenue, SW6

£923 Per week

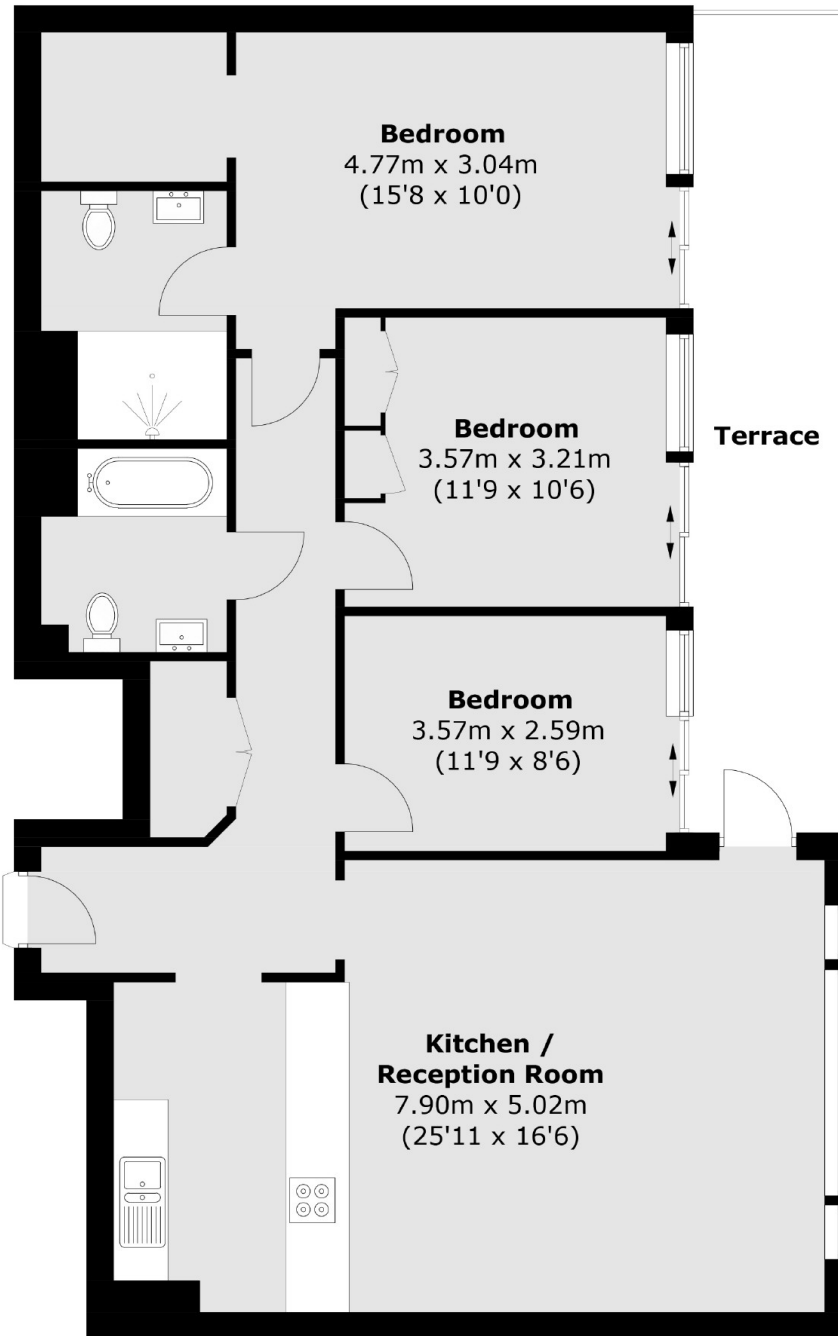
A modern three bedroom, two bathroom apartment based in the popular Imperial Wharf Development. The property has a large reception room that has direct access on to a private balcony with river views and access to communal gardens.

Imperial Wharf has its own residents only gym, secure underground parking and 24/7 concierge, as well as several surrounding restaurants, cafés and pubs. You are also moments away from Imperial park.

### Features

- Three Bedrooms
- Two Bathrooms
- Private Balcony
- 24/7 Concierge
- Furnished
- River Views

# Lensbury Avenue, London, SW6



## Fourth Floor

Total area (approx.): 101.3 sq. m (1,090.3 sq. ft)

Terrace area : 14.9 sq. m (160.3 sq. ft)