



Thames Quay, SW10

£1,153 Per week

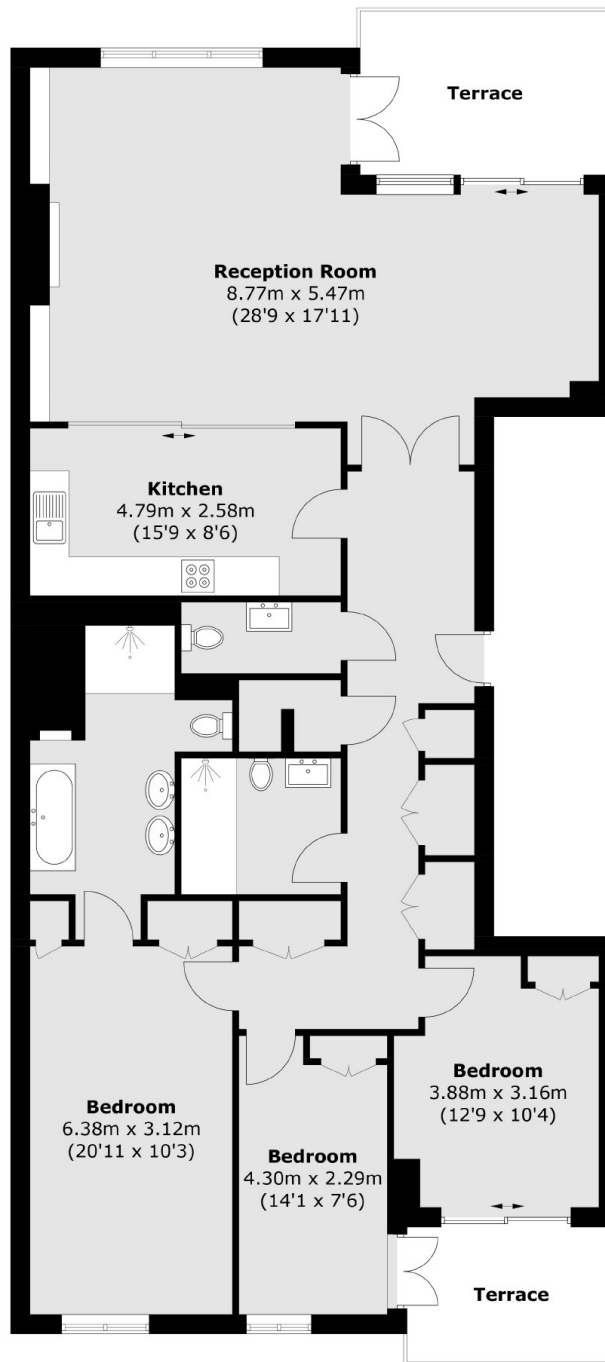
An incredibly bright three bedroom property with river views. This lateral apartment has been thoughtfully interior designed throughout. There is also the additional bonus of one underground parking space and residential porter.

Chelsea Harbour is located close to Imperial Wharf which provides excellent transport links to Clapham Junction, Shepherds Bush and West Kensington.

Features

- Three Bedrooms
- Two Bathrooms
- Porter
- Underground Parking
- Two Terraces
- River Views

Thames Quay, London, SW10



First Floor

Total area (approx.): 138.9 sq. m (1,495.2 sq. ft)
Terrace area : 16.4 sq. m (176.5 sq. ft)

Dexters

Chelsea Harbour
5 Design Centre East
London
SW10 OXF

020 7590 9515

Energy Rating: C. We aim to make our particulars both accurate and reliable. However they are not guaranteed; nor do they form part of an offer or contract. If you require clarification on any points then please contact us, especially if you're traveling some distance to view. Please note that appliances and heating systems have not been tested and therefore no warranties can be given as to their good working order.

 **RICS** | Regulated
Estate Agent
and Letting Agent

[dexters.co.uk](https://www.dexters.co.uk)