



## Harbour Avenue, SW10

£675 Per week

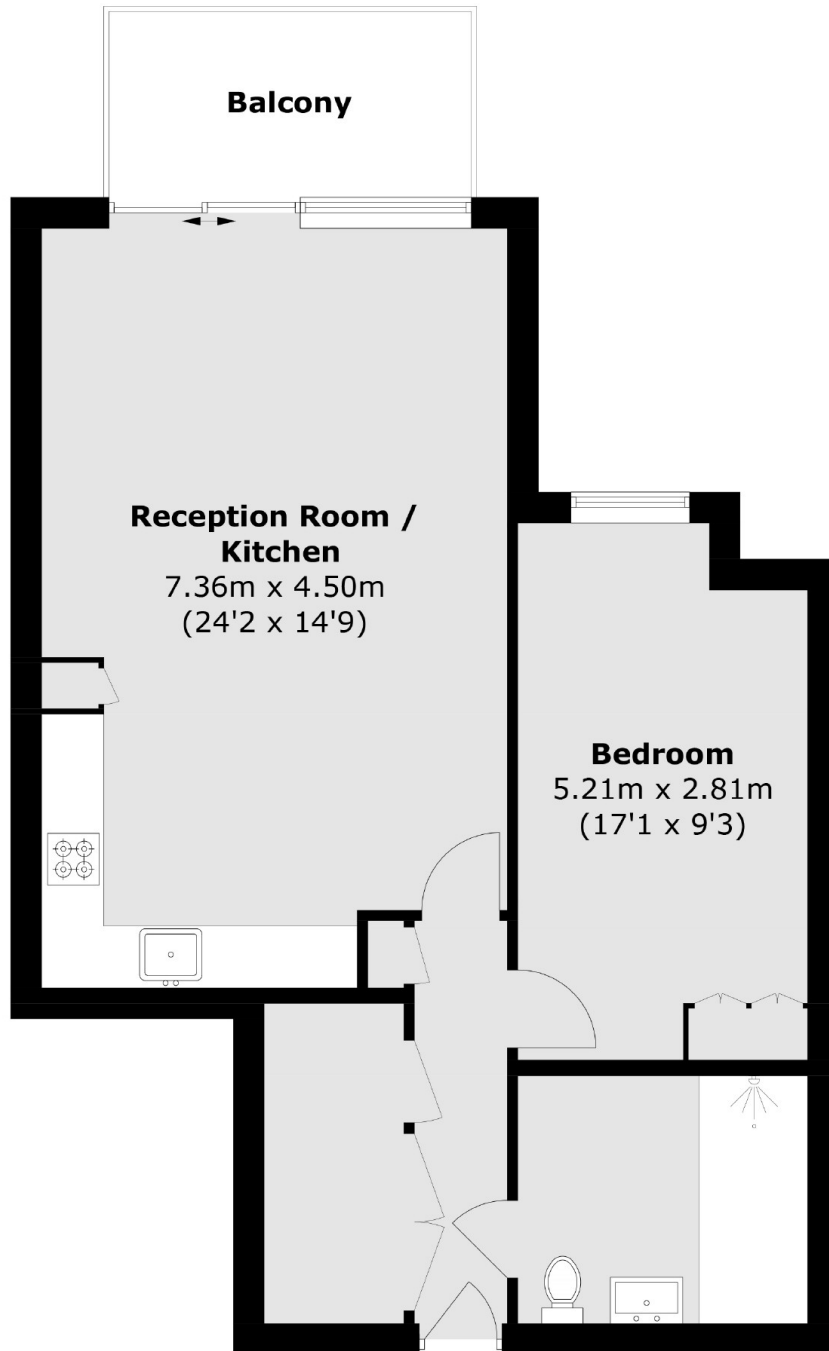
A stunning spacious one bedroom apartment located in the heart of this superb new Chelsea Island development. The property benefits from a high-spec open plan kitchen/reception overlooking communal gardens.

Chelsea Island is an exclusive development located next to the River Thames, Imperial Wharf railway station and river boats to the city are moments away.

### Features

- New Build Apartment
- One Double Bedroom
- Balcony
- Residents Gym
- 24-Hour Concierge
- Imperial Wharf Station

# Harbour Avenue, London, SW10



Total area (approx.): 63.0 sq. m (678.1 sq. ft)  
Balcony: 6.3 sq. m (67.8 sq. ft)

## Dexters

Chelsea Harbour  
5 Design Centre East  
London  
SW10 OXF

020 7590 9515

Energy Rating: B. We aim to make our particulars both accurate and reliable. However they are not guaranteed; nor do they form part of an offer or contract. If you require clarification on any points then please contact us, especially if you're traveling some distance to view. Please note that appliances and heating systems have not been tested and therefore no warranties can be given as to their good working order.

 **RICS** | Regulated  
Estate Agent  
and Letting Agent

[dexters.co.uk](https://www.dexters.co.uk)