



The Quadrangle, SW10

£912 Per week

A stunning two bedroom, two bathroom, first floor apartment with two balconies and a fabulous open plan sitting room/kitchen/dining room. One secure underground car park space. The property is decorated in classic, neutral style and has wonderful natural light.

The Quadrangle is conveniently situated for Imperial Wharf overground station which has links to the underground at West Brompton (District Line). Supermarket megastore is within easy reach.

Features

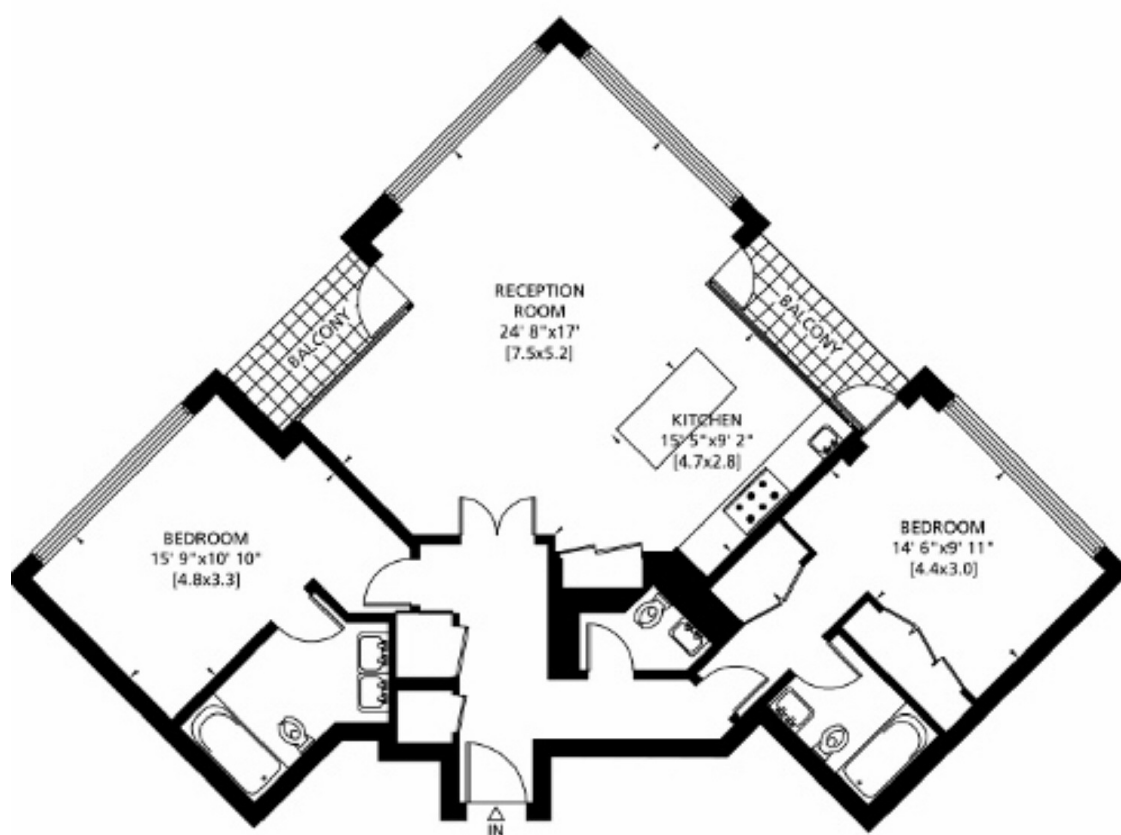
- Two Double Bedrooms
- Two Bathrooms
- Open Plan Kitchen
- Private Balcony
- Porter
- Underground Parking Space

The Quadrangle, London, SW10



Gross Internal Area: 112 Sq. metres
1207 Sq. feet

Balcony Area: 8 Sq. metres
86 Sq. feet



FIRST FLOOR

Dexters

Chelsea Harbour
5 Design Centre East
London
SW10 OXF

020 7590 9515

Energy Rating: C. We aim to make our particulars both accurate and reliable. However they are not guaranteed; nor do they form part of an offer or contract. If you require clarification on any points then please contact us, especially if you're traveling some distance to view. Please note that appliances and heating systems have not been tested and therefore no warranties can be given as to their good working order.



dexters.co.uk