



Lensbury Avenue, SW6

£800 Per week

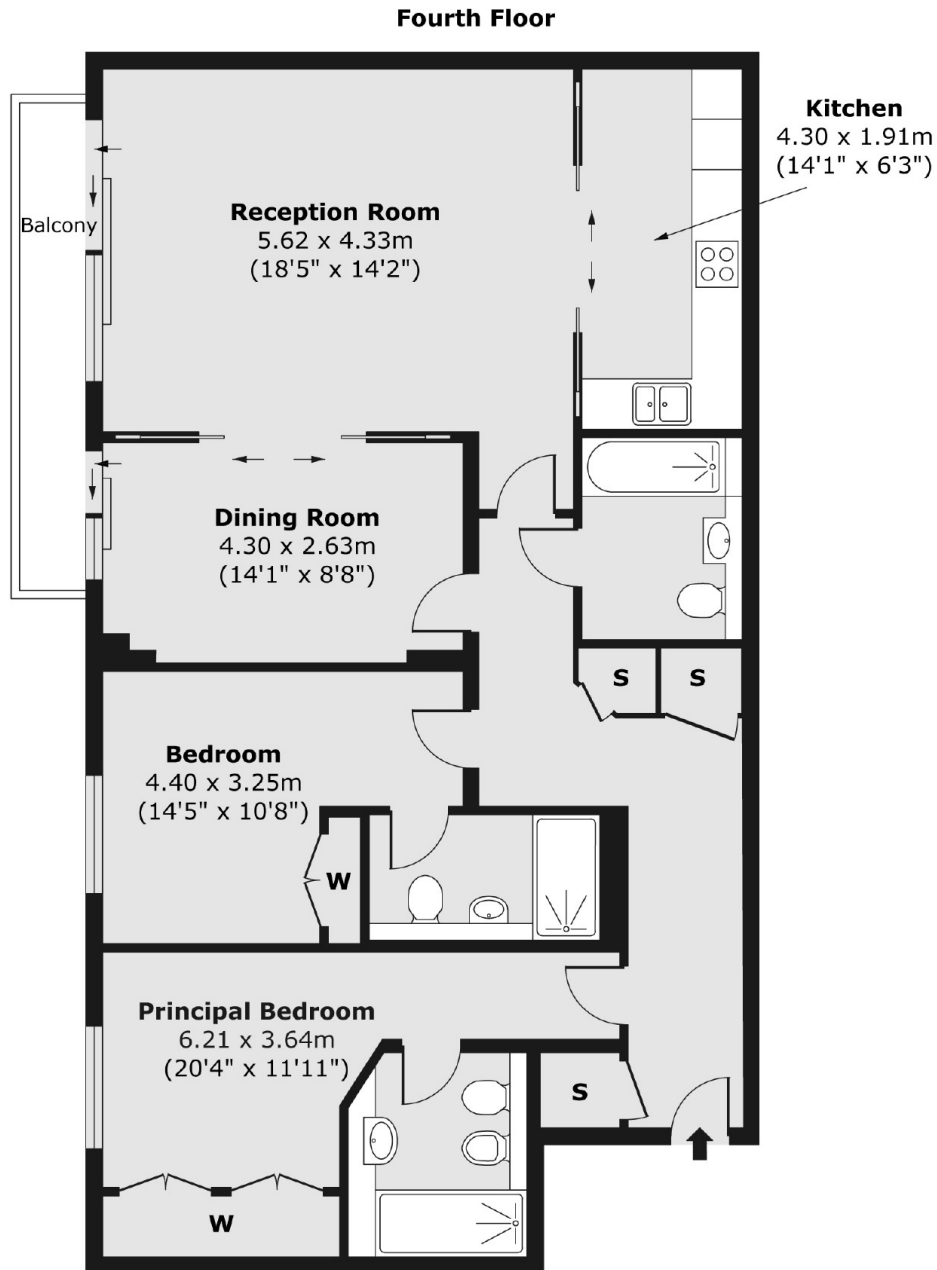
A fabulous three bedroom, three bathroom apartment with well-proportioned rooms and a balcony with views of the river across landscaped gardens. Imperial Wharf is an award-winning riverside development with restaurants and a vibrant waterside pub.

Imperial Wharf overground station has links to the underground network at West Brompton (District Line) & Shepherds Bush (Central Line).

Features

- Three Double Bedrooms
- Three Bathrooms
- Balcony With River Views
- 24 Hour Concierge
- Imperial Wharf
- Available August 30th

Lensbury Avenue, London, SW6



Total Area(approx.): 104.28 sq. m (1,122 sq. ft)
Total Balcony Area(approx.): 4.60 sq. m (50 sq. ft)