

Harbour Avenue, SW10

£750 Per week

A stunning spacious one bedroom one bathroom, first floor apartment located in the heart of this superb new Chelsea Island development. The property benefits from a high-spec open plan kitchen/reception overlooking communal gardens.

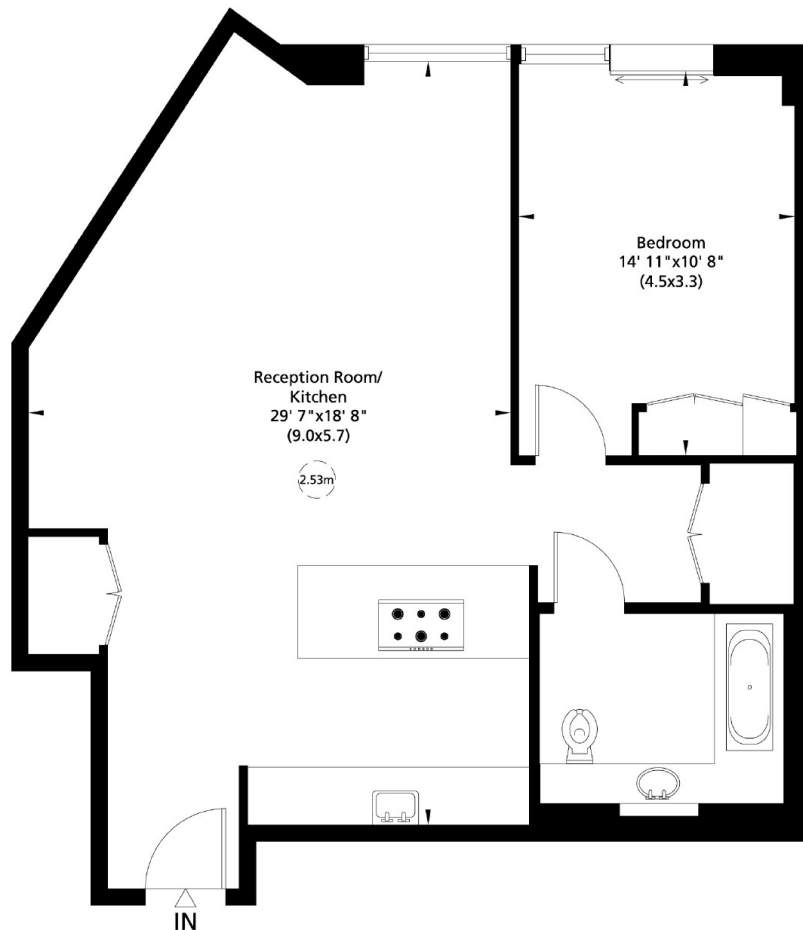
Chelsea Island is an exclusive development located next to the River Thames, Imperial Wharf railway station and river boats to the city are moments away.

Features

- New Build Apartment
- One Double Bedroom
- Modern
- Residents Gym
- 24-Hour Concierge
- Imperial Wharf Station

Harbour Avenue, London, SW10

Gross Internal Area: 77 Sq. metres
826 Sq. feet



First Floor

Not to scale, for guidance only and must not be relied upon as a statement of fact. All measurements and areas are approximate only (and have been prepared in accordance with the current edition of the RICS Code of Measuring Practice).

Dexters

Chelsea Harbour
5 Design Centre East
London
SW10 OXF

020 7590 9515

Energy Rating: B. We aim to make our particulars both accurate and reliable. However they are not guaranteed; nor do they form part of an offer or contract. If you require clarification on any points then please contact us, especially if you're traveling some distance to view. Please note that appliances and heating systems have not been tested and therefore no warranties can be given as to their good working order.



dexters.co.uk