



## Carlyle Court, SW10

£1,250 Per week

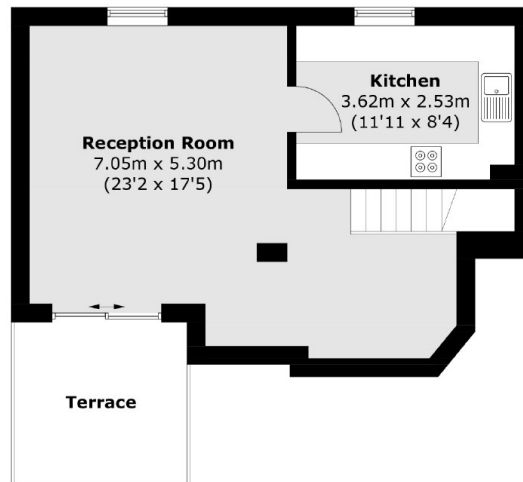
A stunning two double bedroom penthouse apartment in Chelsea Harbour. This very bright property has a two bathrooms, roof terrace, a porter and one underground parking space.

Carlyle Court is conveniently situated for Imperial Wharf overground station which has links to the underground at West Brompton (District Line). Supermarket megastore is within easy reach.

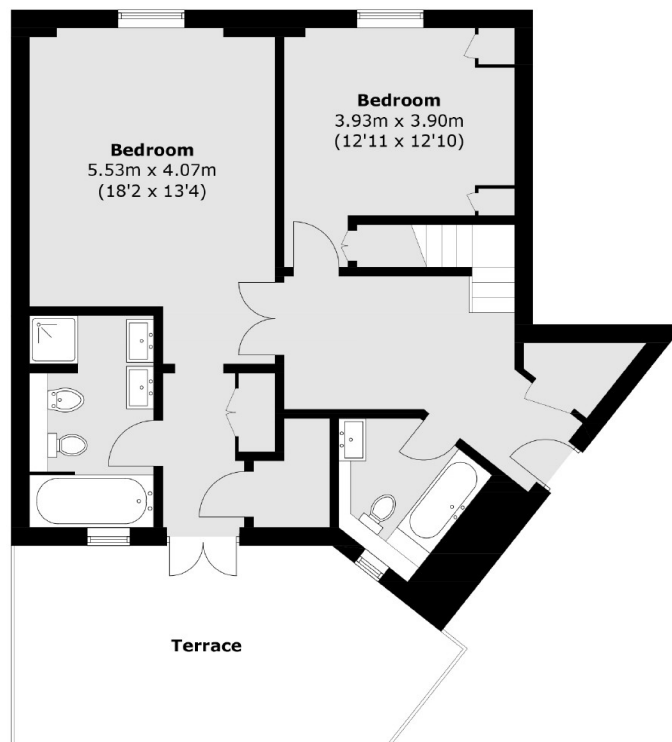
### Features

- Penthouse Apartment
- Two Double Bedrooms
- Two Bathrooms
- Roof Terrace
- One Parking Space
- Porter

# Carlyle Court, London, SW10



**Fourth Floor**



**Third Floor**

Total area (approx.): 108.7 sq. m (1,170.0 sq. ft)  
Terrace: 29.1 sq. m (313.2 sq. ft)