



The Boulevard, SW6

£900 Per week

A spacious three bedroom, three bathroom apartment with a large private balcony. Imperial Wharf is an award-winning riverside development with restaurants and a vibrant waterside pub.

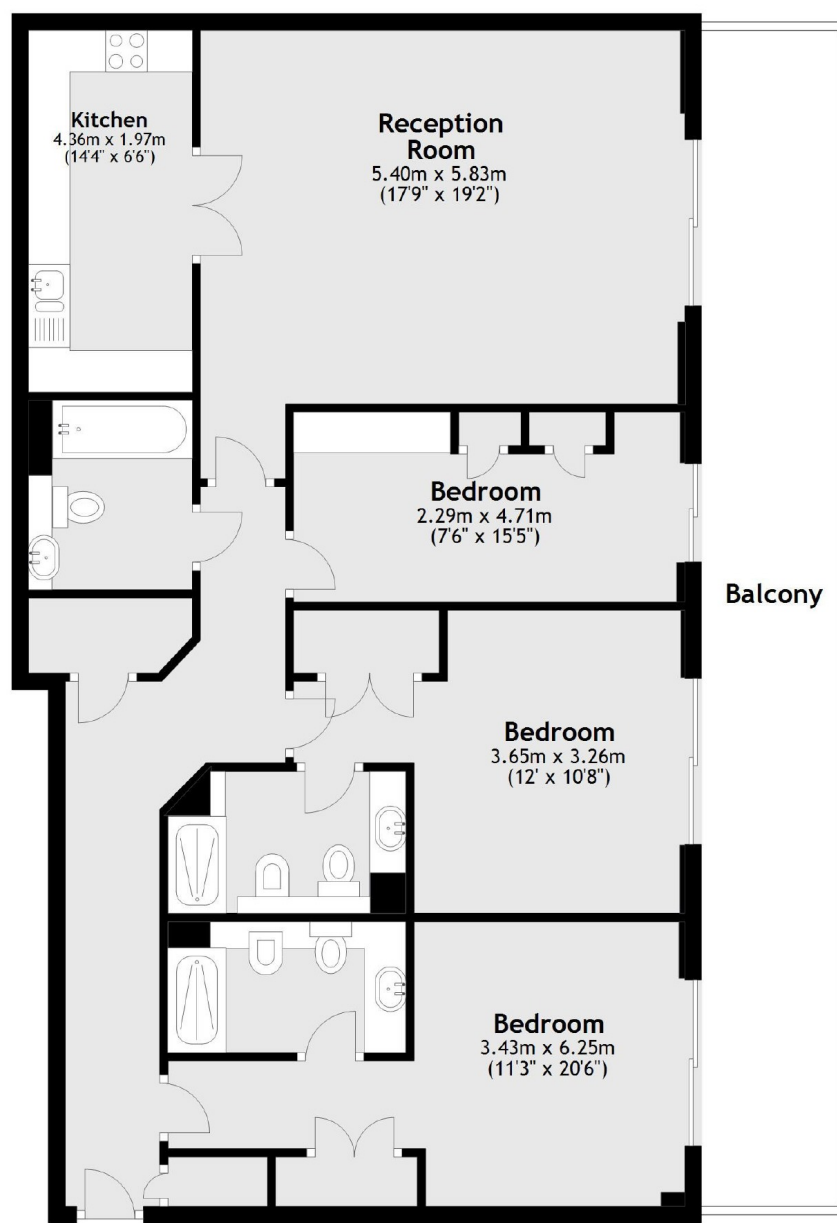
Imperial Wharf overground station has links to the underground network at West Brompton (District Line) & Shepherds Bush (Central Line).

Features

- Riverside Apartment
- Three Bedrooms
- Three Bathrooms
- Private Balcony
- 24hr Concierge and Gym
- Water Rates Included

The Boulevard, London, SW6

Third Floor



Main area: Approx. 109.1 sq. metres (1174.5 sq. feet)
Plus balconies, approx. 25.0 sq. metres (268.9 sq. feet)