



Thurstan Street, SW6

£600 Per week

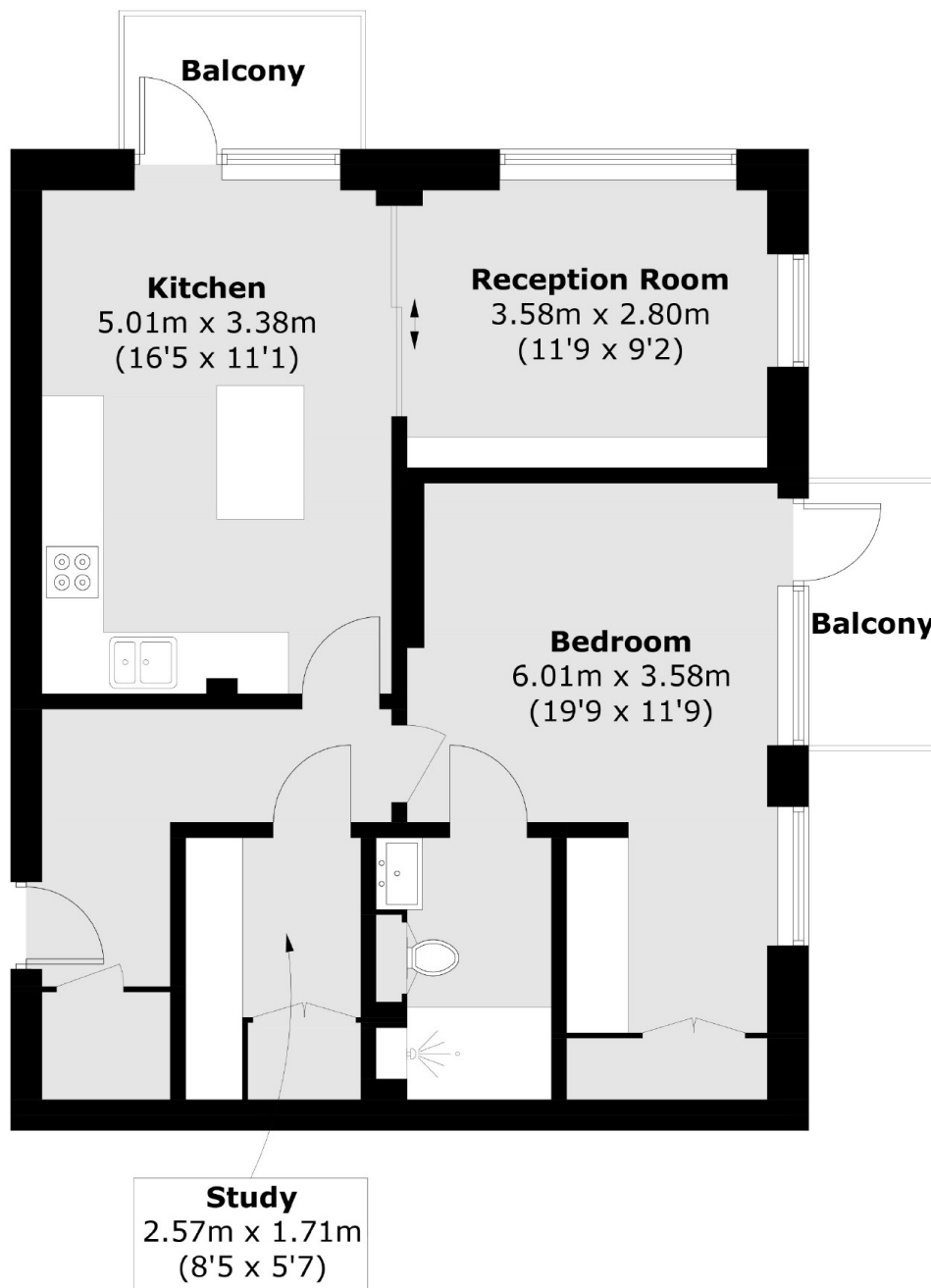
A beautifully finished one double bedroom apartment in Chelsea Creek. The property has an open plan kitchen living room which has direct access to one of two balconies. The flat comes with a separate office/study.

Located in the sought after Chelsea Creek development, the property is close to Chelsea and Imperial Wharf.

Features

- Underground Car Parking
- Concierge
- Gym And Swimming Pool
- Separate Office/Study
- Two Balconies
- One Double Bedroom

Thurstan Street, London, SW6



Total area (approx.): 64.4 sq. m (693.2 sq. ft)

Balconies area: 6.2 sq. m (66.7 sq. ft)