



## Lombard Road, SW11

**£576** Per week

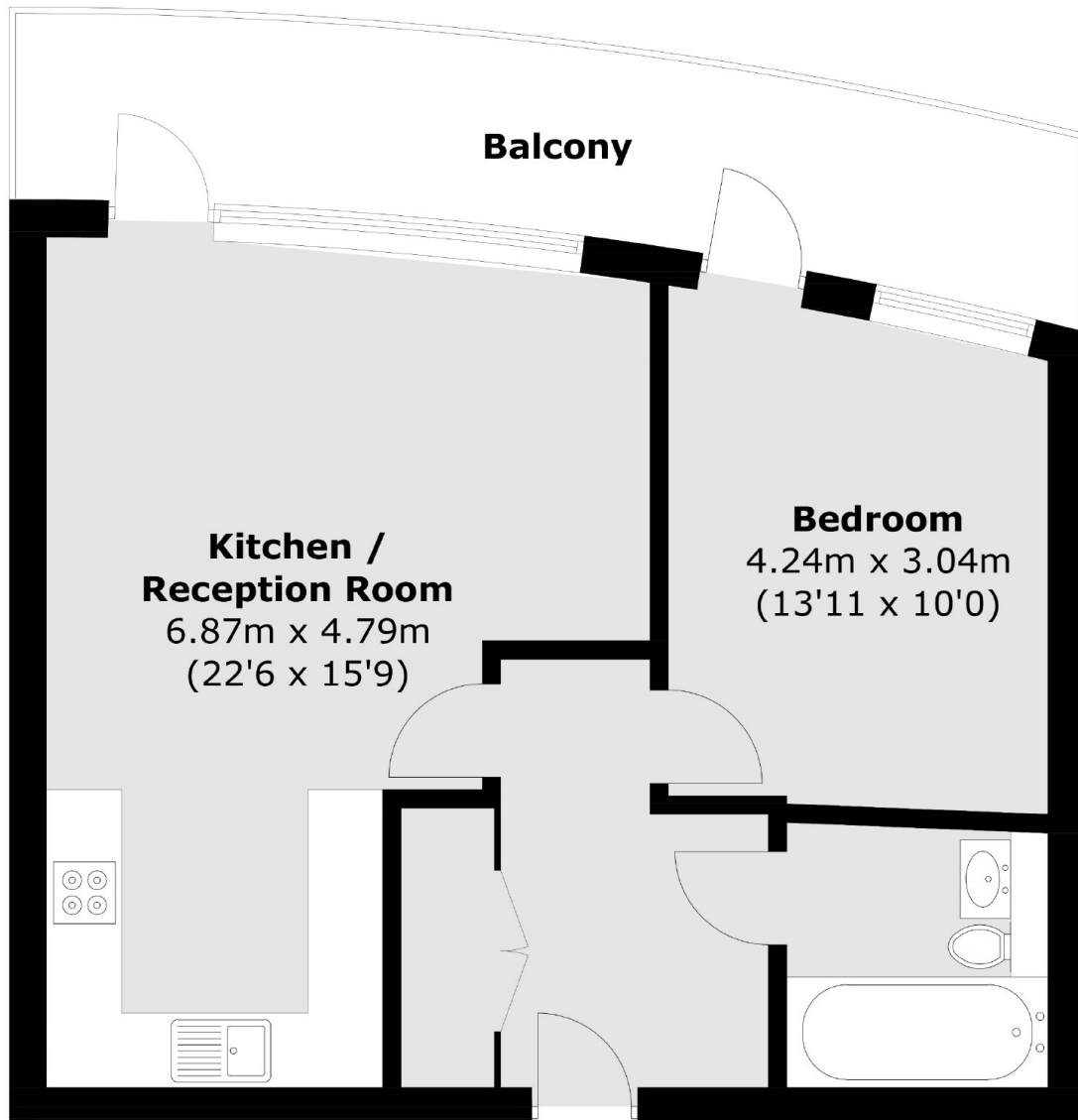
A spectacular one double bedroom apartment situated on the 22nd floor with a private balcony with incredible river views. The flat benefits from a 24h concierge, a large gym and bike storage. Parking available at extra cost. The flat benefits from underfloor heating and comfort cooling throughout.

Lombard Wharf is situated in close proximity to Battersea Square's trendy shops, bars and restaurants and is within 0.6 miles of Clapham Junction station.

### Features

- One Double Bedroom
- Furnished
- Balcony
- Gym
- 24 Hour Concierge
- River Views

# Lombard Road, London, SW11



Total area (approx.): 52.8 sq. m (568.3 sq. ft)  
Balcony area : 12.9 sq. m (138.8 sq. ft)

## Dexters

Chelsea Harbour  
5 Design Centre East  
London  
SW10 OXF

020 7590 9515

Energy Rating: B. We aim to make our particulars both accurate and reliable. However they are not guaranteed; nor do they form part of an offer or contract. If you require clarification on any points then please contact us, especially if you're traveling some distance to view. Please note that appliances and heating systems have not been tested and therefore no warranties can be given as to their good working order.

 **RICS** | Regulated  
Estate Agent  
and Letting Agent

[dexters.co.uk](https://www.dexters.co.uk)