



## Lensbury Avenue, SW6

£934 Per week

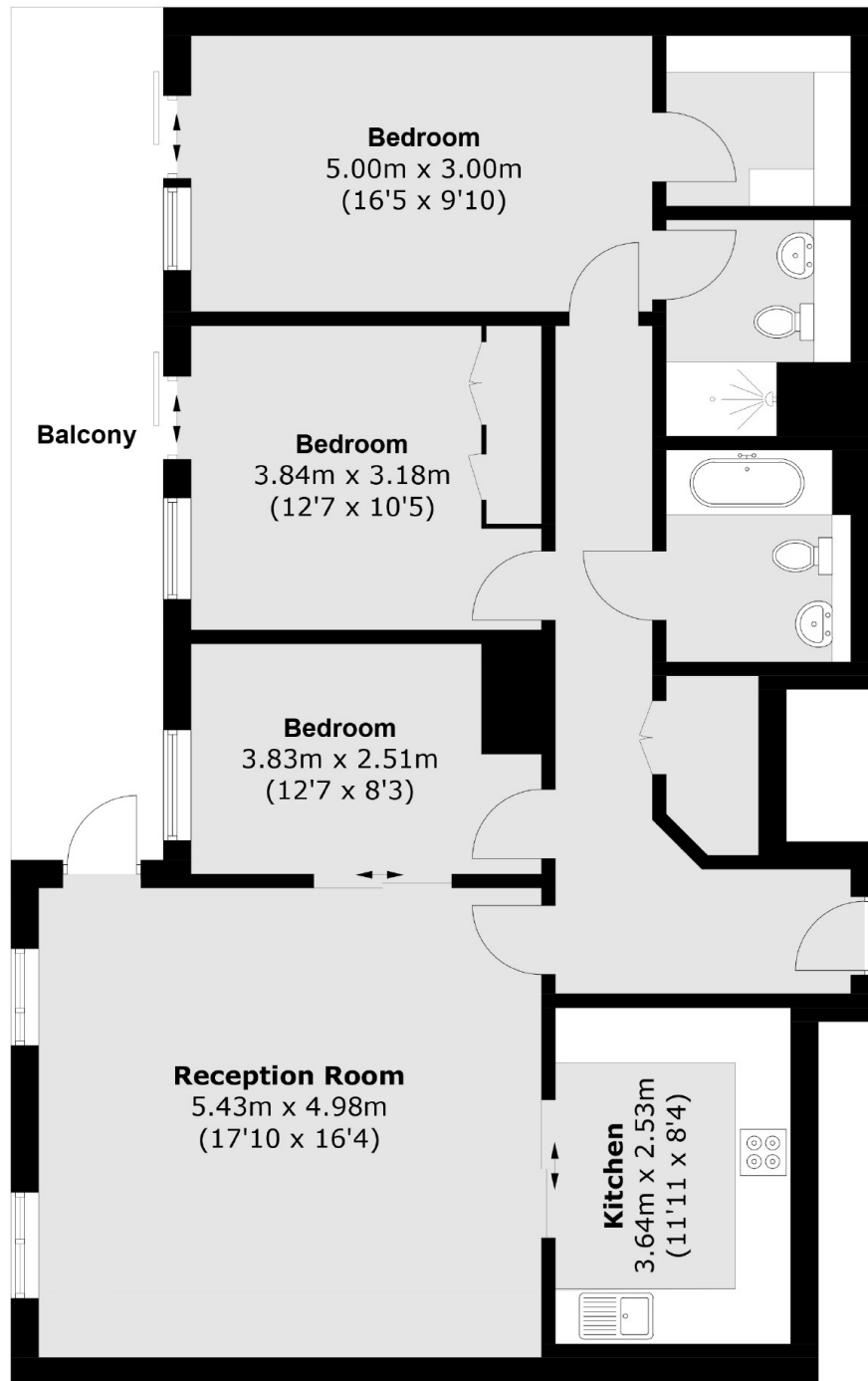
A spectacular two bedroom, two bathroom apartment on the fifth floor in the Imperial Wharf riverside development, with a private balcony and views of the River Thames.

Imperial Wharf is located next to Chelsea Harbour and served by its own London Overground Station as well as being a short walk from Fulham Broadway. Imperial Wharf has a supermarket on site.

### Features

- Two Double Bedrooms
- Two Bathrooms
- Dining Room/3rd Bedroom
- Private Balcony
- 24-Hour Concierge
- Private Gym

# Lensbury Avenue, London, SW6



Total area (approx.): 106.3 sq. m (1,144.2 sq. ft)  
Balcony area : 15.3 sq. m (164.6 sq. ft)