



## Lensbury Avenue, SW6

£1,735 Per week

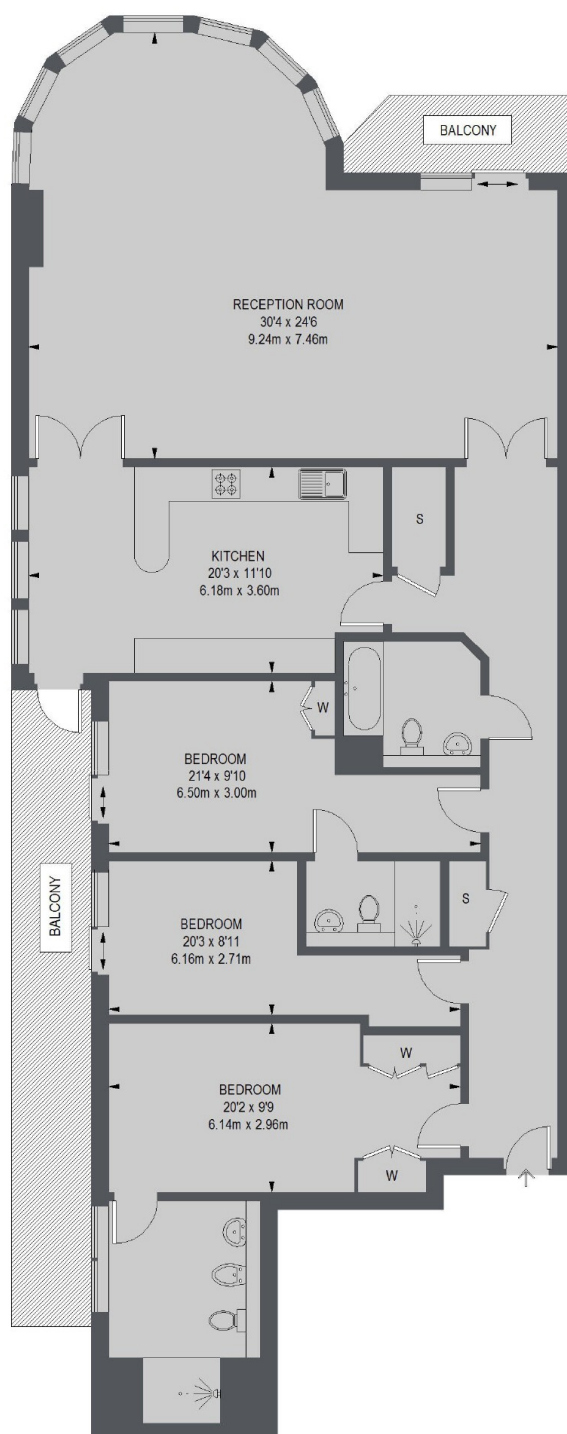
A spectacular three bedroom, three bathroom apartment on the fourth floor in the Imperial Wharf riverside development, boasting a wide balcony and direct views of the River Thames.

Imperial Wharf is located next to Chelsea Harbour and served by its own London Overground Station as well as being a short walk from Fulham Broadway.

### Features

- Three Double Bedrooms
- Three Bathrooms
- Private Balcony
- 24-Hour Concierge
- Access To Gym
- Underground Parking

# Lensbury Avenue, London, SW6



TOTAL APPROX. FLOOR AREA 1849 SQ. FT. (171.82 SQ. M.)

## Dexters

Chelsea Harbour  
5 Design Centre East  
London  
SW10 OXF

020 7590 9515

Energy Rating: C. We aim to make our particulars both accurate and reliable. However they are not guaranteed; nor do they form part of an offer or contract. If you require clarification on any points then please contact us, especially if you're traveling some distance to view. Please note that appliances and heating systems have not been tested and therefore no warranties can be given as to their good working order.

 **RICS** | Regulated  
Estate Agent  
and Letting Agent

[dexters.co.uk](https://www.dexters.co.uk)