



Carlyle Court, SW10

£775 Per week

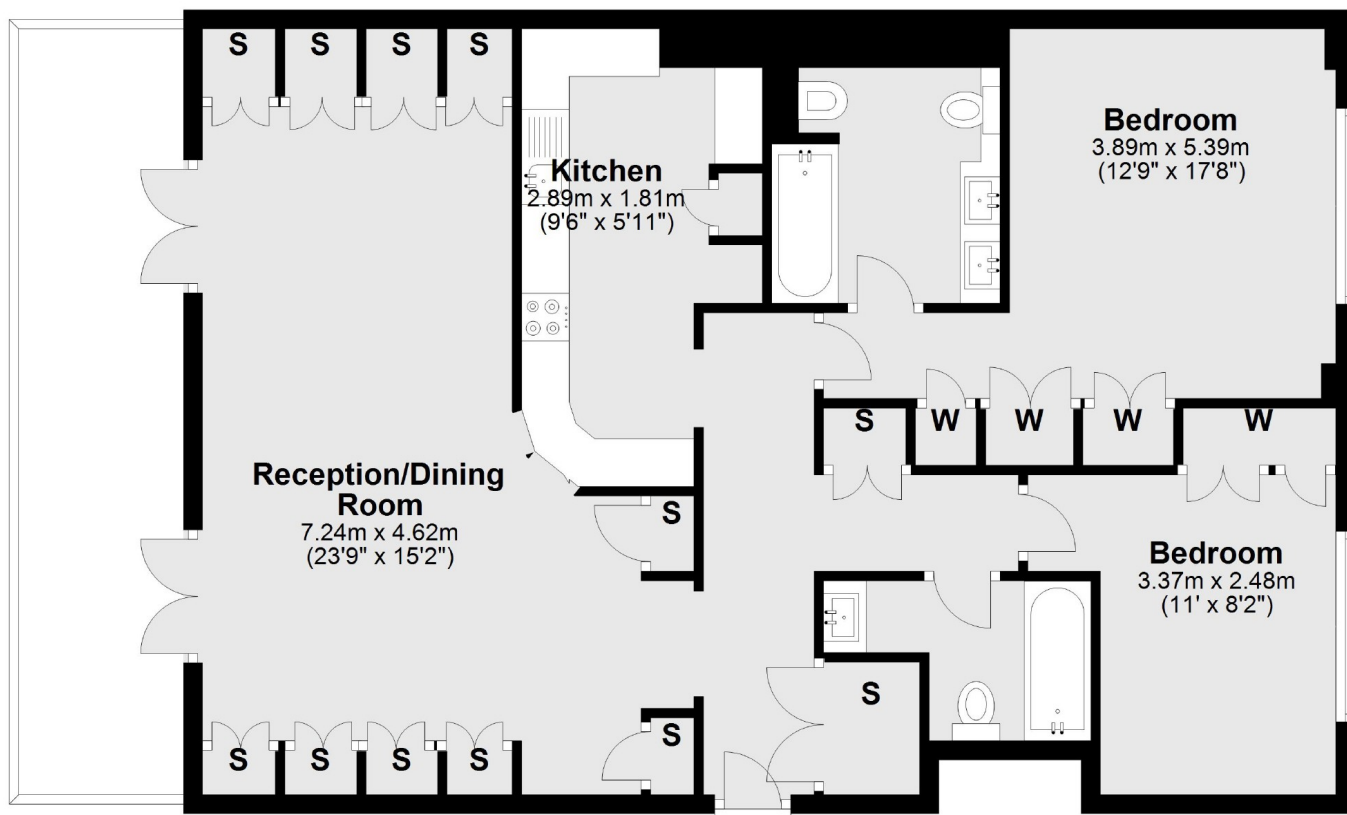
A recently decorated two bedroom flat in Chelsea with on-site porter and arranged over the second floor. Ideal for professional tenants wanting a secure gated development with an easy commute into the city.

Chelsea Harbour is an exclusive development located next to the River Thames not far from the Kings Road. Imperial Wharf railway station and river boats to the city are moments away.

Features

- Two Bedrooms
- Two Bathrooms
- Unfurnished
- Private Terrace
- Porter
- Parking

Carlyle Court, London, SW10



Second Floor

Total area: approx. 95.0 sq. metres (1022.8 sq. feet)