



## Townmead Road, SW6

£658 Per week

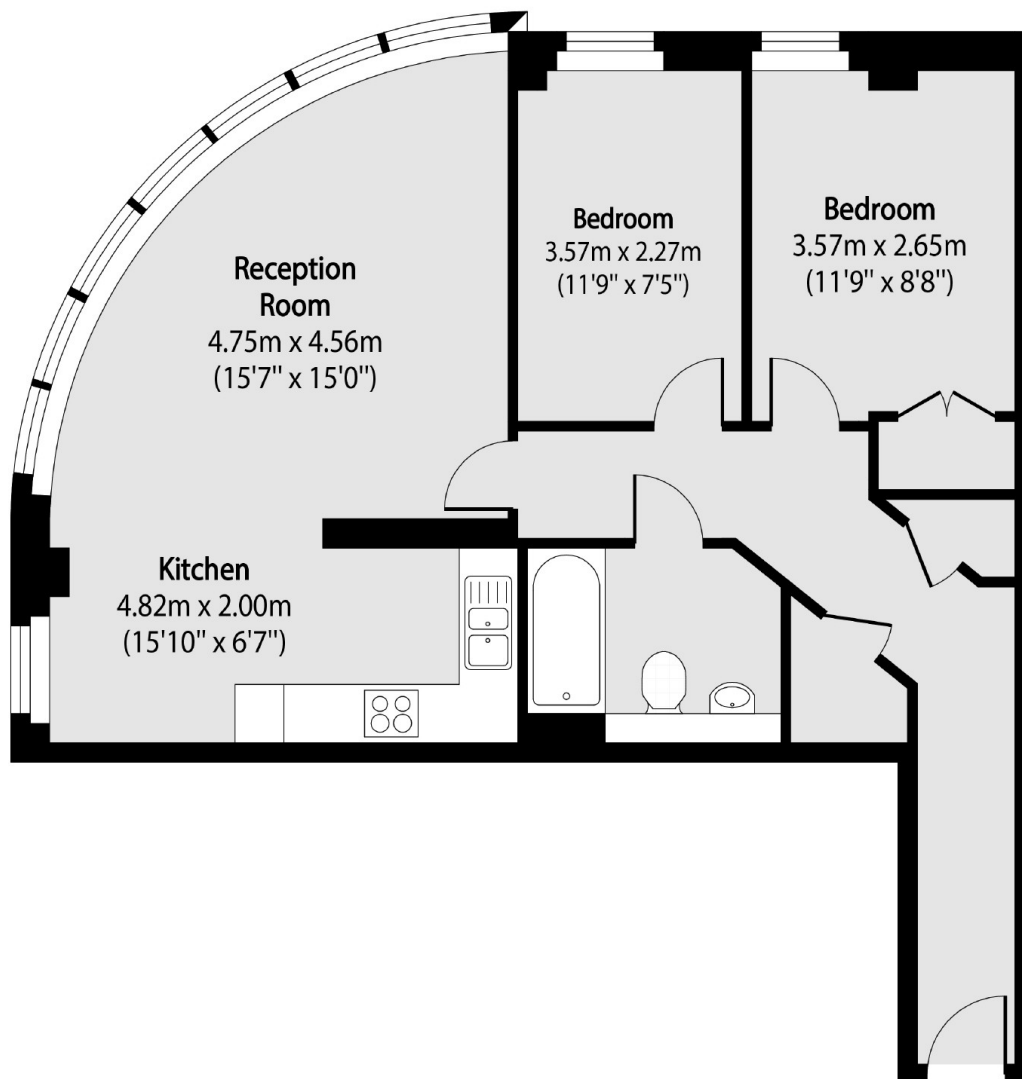
A bright and contemporary two double bedroom apartment situated in the award winning Imperial Wharf development on the River Thames with 24 hour concierge.

Imperial Wharf offers a number of excellent restaurants and bars and the river bus service provides direct access to Blackfriars and Putney Piers.

### Features

Two Double Bedrooms  
Available Now  
Large Reception Room  
Open Plan Kitchen  
24 Hour Concierge  
Imperial Wharf Station

# Townmead Road, London, SW6



Total area (approx): 67.33 sq m (725 sq. ft)