



## Juniper Drive, SW18

£725 Per week

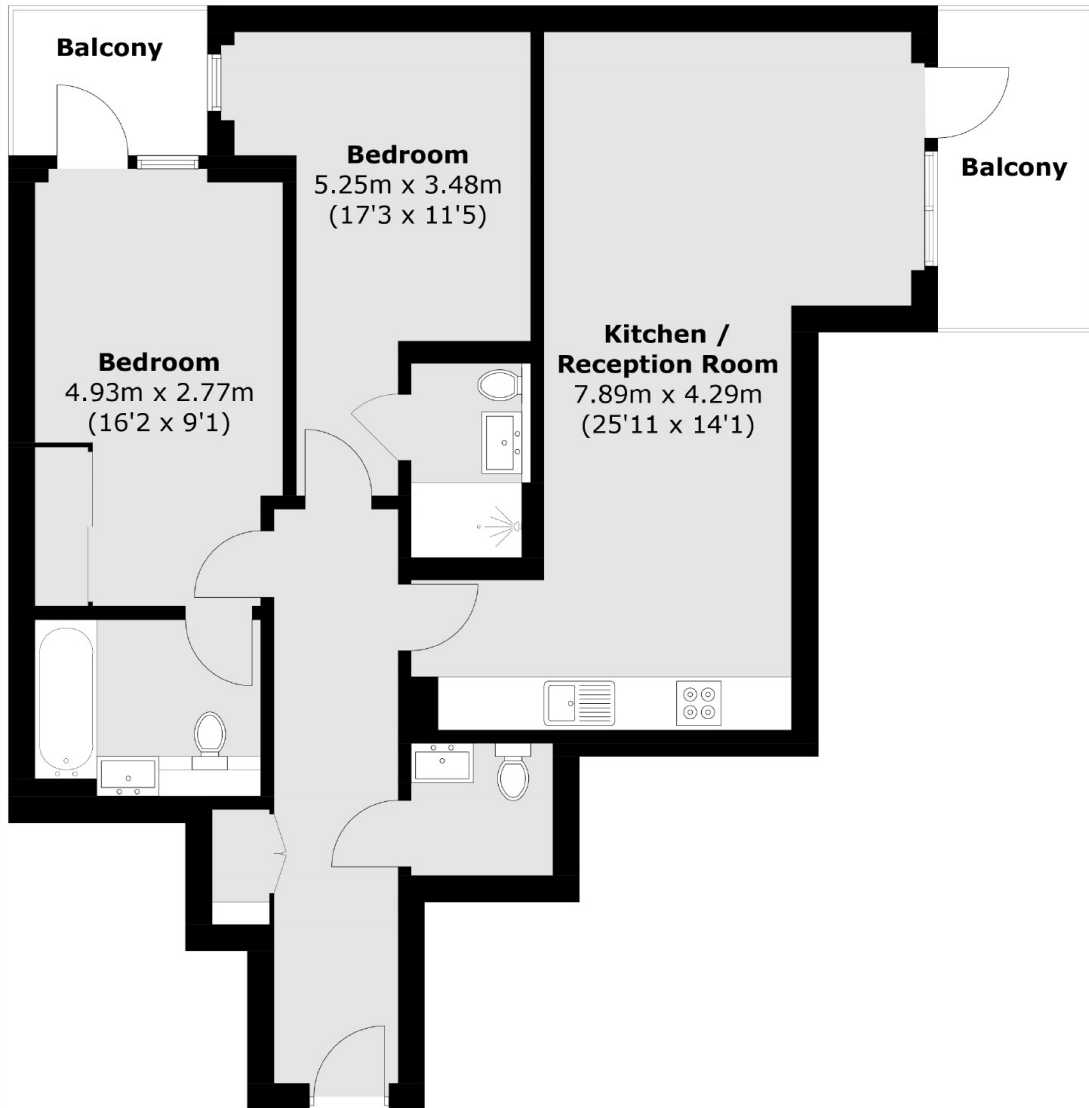
A recently built two bedroom two bathroom apartment within the popular Battersea Reach development, offering spacious contemporary living accommodation, tastefully interior designed to a high standard with 2 private balconies.

Battersea Reach development offers high end riverside accommodation with 24hr Concierge, gym, and an onsite Tesco express. The development is located within half a mile of Wandsworth Town station and within a mile of Clapham Junction station.

### Features

- Two Double Bedrooms
- Two Bathrooms
- Open Plan Kitchen
- Residents Gym
- Two Balconies
- 24hr Concierge

# Juniper Drive, London, SW18



## Fifth Floor

Total area (approx.): 80.3 sq. m (864.3 sq. ft)  
Balcony area : 9.9 sq. m (106.6 sq. ft)