



## Lensbury Avenue, SW6

£1,695 Per week

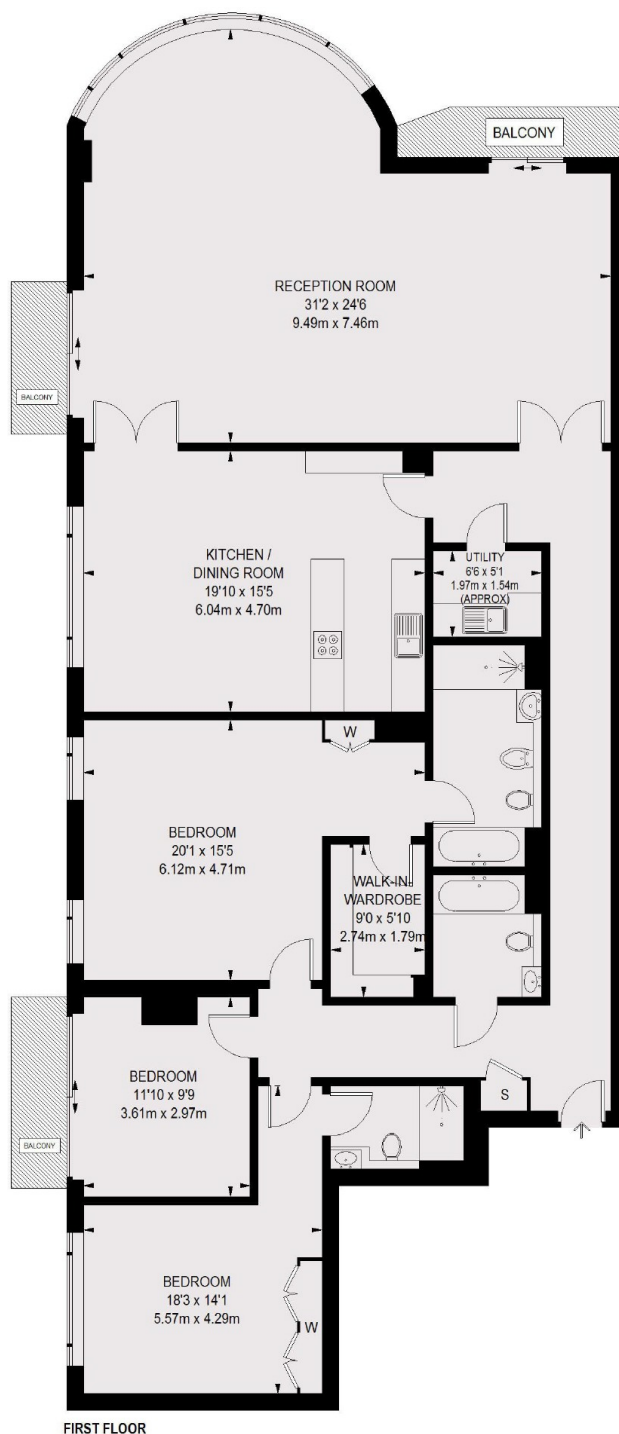
A spectacular 2,100sq ft three bedroom, three bathroom apartment on the first floor in the Imperial Wharf riverside development with direct views of the river Thames.

Imperial Wharf is located next to Chelsea Harbour and served by its own London Overground Station as well as being a short walk from Fulham Broadway.

### Features

- Three Double Bedrooms
- Three Bathrooms
- Private Balcony
- 24-Hour Concierge
- Access To Gym
- Underground Parking

# Lensbury Avenue, London, SW6



TOTAL APPROX. FLOOR AREA 2132 SQ. FT. ( 198.06 SQ. M.)