



Thames Quay, SW10

£808 Per week

A stunning two bedroom apartment overlooking the Thames from a private terrace set in this exclusive development at Chelsea Harbour.

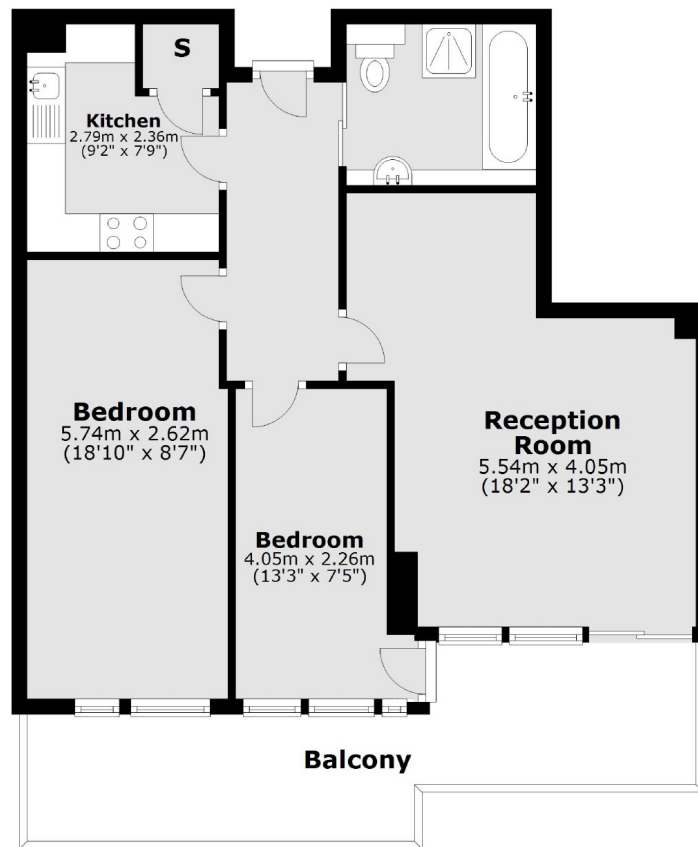
Thames Quay is an exclusive development located next to the River Thames. Imperial Wharf railway station and river boats to the city are moments away.

Features

- Two Bedroom
- River Views
- Private Terrace
- Porter
- Newly Refurbished
- Underground Parking

Thames Quay, London, SW10

Ground Floor



Main area: Approx. 63.9 sq. metres (687.9 sq. feet)
Plus balconies, approx. 16.0 sq. metres (172.2 sq. feet)